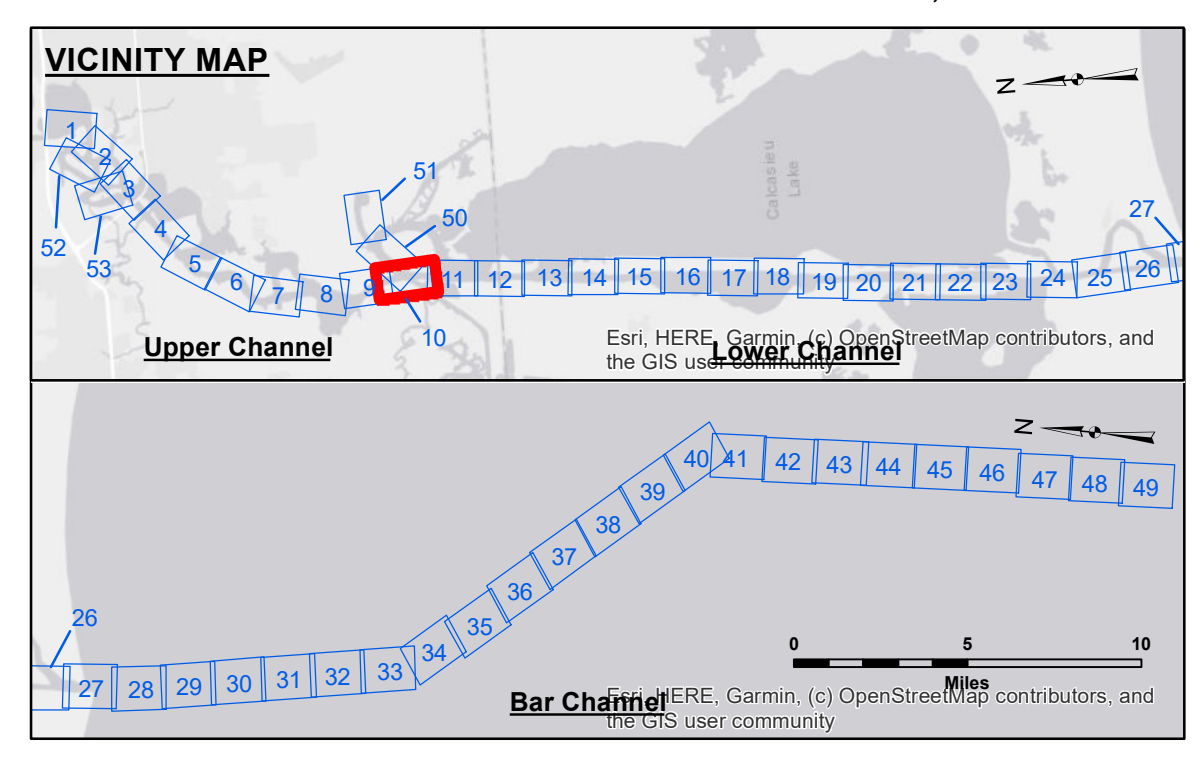
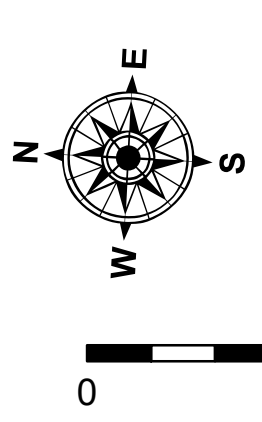


DISCLAIMER
 The United States Government furnishes these data and the recipient accepts and uses them with the express understanding that the data are not to be used for any purpose other than that for which they were originally collected, expressed, or implied concerning the accuracy, completeness, reliability, usability or suitability, for any particular purpose of the recipient. The user is responsible for the results obtained from the use of these data. The user shall indemnify and hold the United States Government harmless from and against all claims, damages, losses and expenses, including reasonable attorneys' fees, that may be incurred by the United States Government as a result of the use of these data for any purpose other than that for which they were originally collected, expressed, or implied. The recipient may not transfer these data to others without also transferring this Disclaimer. The information depicted on this map represents the results of a survey conducted on or about the date of the survey. The user is responsible for the results of the survey. The user shall indemnify and hold the United States Government harmless from and against all claims, damages, losses and expenses, including reasonable attorneys' fees, that may be incurred by the United States Government as a result of the use of these data for any purpose other than that for which they were originally collected, expressed, or implied.

U.S. ARMY CORPS OF ENGINEERS NEW ORLEANS DISTRICT		
Submitted:	Surveyed By: SP-JS	Plotted By: BD
Recommended:	Checked By: AD/JH	Checked By: AD/JH
Approved:	Chart, Waterways Maintenance Section	



LEGEND		
--- Federal Navigation Channel	○ Cable Area	3 Fluff Thickness (feet)*
— Federal Navigation Center Line	□ Placement Area	● Shoalest Sounding**
— As-built Pipeline/Cable	⊗ Anchorage Area	★ Beacon, General
..... Unconfirmed Pipeline/Cable	⊗ Obstruction Point	◆ Red Navigation Buoy
— Project Depth Contour	⊗ Wrecks-Submerged	◆ Green Navigation Buoy



Gage Reading: DM 92: 0.8 MLLW
 Sea Conditions: CHOPPY
 Vessel Name: MV TECHE
 Survey Type: CONDITION
 Sounding Frequency***: LOW

0 400 800 1,200 1,600
 Feet

NOTES:
 Horizontal Coordinate System:
 North American Datum of 1983 (NAD83), projected to the State Plane Coordinate System (SPCS), Louisiana South Zone. Distance units in U.S. Survey Feet.
 Vertical Datum:
 Soundings are shown in feet and indicate depths below Mean Lower Low Water Datum (MLLW).
 Datum Relationships for gage 73585 as of December 2013:
 0.0' NAVD83 (OPUS 2013) = 0.8' MLLW = 1.8' MLG or 0.0' MLLW = 1.0' MLG
 Distances on the Calcasieu River are shown at 1 mile intervals.
 The location of navigation aids are base on and provided by the U.S. Coast Guard and USACE survey crews.
 2022 Aerial Photography data source: PAR LLC
 Reference is N.O.A.A. Navigation Chart No. 11339.
 * Difference between high and low frequency elevations where greater than 1.0'.
 ** Shoalest Sounding per Quarter per Reach.
 *** High frequency (200 kHz) survey data represents the first signal return at a sounding location and will include suspended solids, known as "fluff", if present. Low frequency (20 kHz) survey data normally penetrates through this "fluff" layer to depict elevations of consolidated bottom material. Low frequency accuracies may vary depending on channel conditions and fathometer settings.

**CALCASIEU SHIP CHANNEL
 UPPER SHEET 10
 CR_10_UPR_20250113_CS
 13 January 2025**

**Sheet
 Reference
 Number
 10 of 53**