

**DISCLAIMER**  
 The United States Government furnishes these data and the recipient accepts and uses them with the express understanding that the data are not to be used for any purpose other than that for which they were originally prepared. The user is responsible for the results of any use of the data for other than the intended purpose.  
 Data Constants: Hydrographic survey data is subject to change and may be updated. The user is responsible for obtaining the most current data for use in any project. The user is responsible for ensuring that the data is used in accordance with the intended purpose. The user is responsible for ensuring that the data is used in accordance with the intended purpose.  
 The information depicted on this map represents the results of a survey conducted on or about the date of the survey. The user is responsible for ensuring that the data is used in accordance with the intended purpose. The user is responsible for ensuring that the data is used in accordance with the intended purpose.

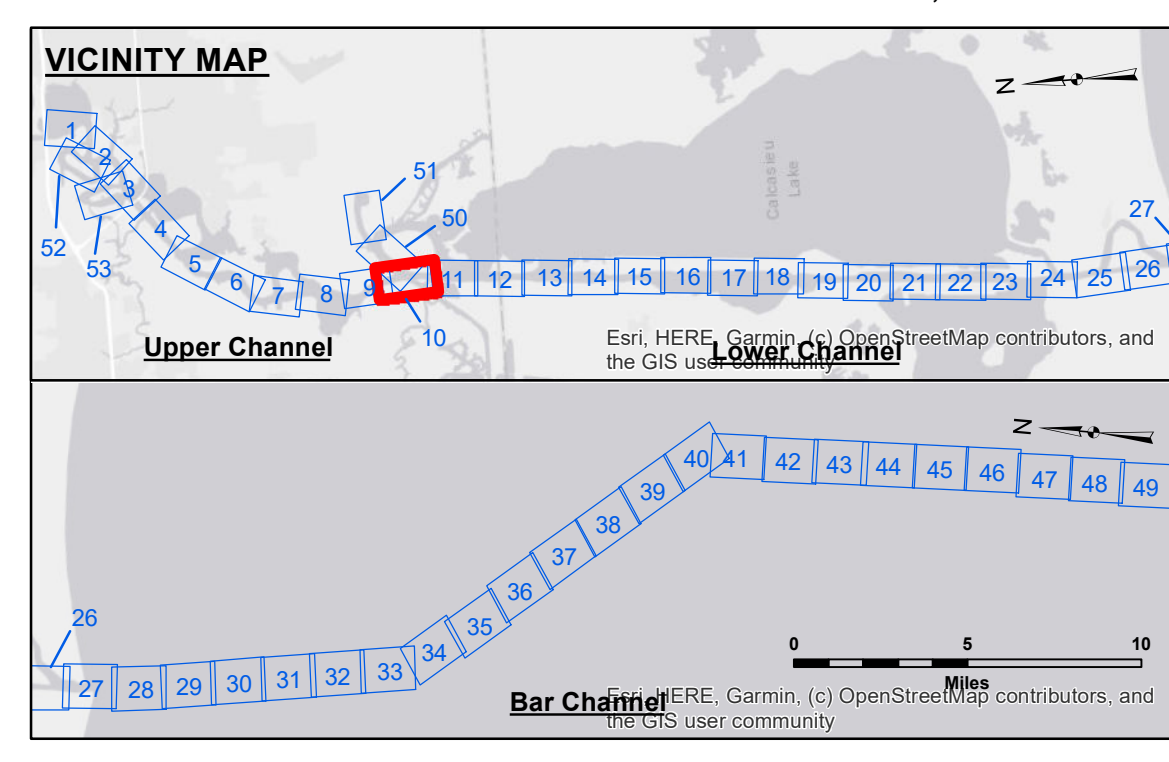
**ACCESS**  
 The United States Government furnishes these data and the recipient accepts and uses them with the express understanding that the data are not to be used for any purpose other than that for which they were originally prepared. The user is responsible for the results of any use of the data for other than the intended purpose.  
 Data Constants: Hydrographic survey data is subject to change and may be updated. The user is responsible for obtaining the most current data for use in any project. The user is responsible for ensuring that the data is used in accordance with the intended purpose. The user is responsible for ensuring that the data is used in accordance with the intended purpose.  
 The information depicted on this map represents the results of a survey conducted on or about the date of the survey. The user is responsible for ensuring that the data is used in accordance with the intended purpose. The user is responsible for ensuring that the data is used in accordance with the intended purpose.

U.S. ARMY CORPS OF ENGINEERS NEW ORLEANS DISTRICT	
Submitted:	Checked By: ADU/H
Recommended:	Checked By: ADU/H
Approved:	Checked By: ADU/H

**CALCASIEU SHIP CHANNEL**  
**UPPER SHEET 10**  
**CR\_10\_UPR\_20250219\_CS**  
**19 February 2025**

**Sheet Reference Number**  
**10 of 53**

Revision Number:  
 4-2-2010(04/20)



LEGEND	
--- Federal Navigation Channel	○ Cable Area
— Federal Navigation Center Line	□ Placement Area
— As-built Pipeline/Cable	□ Anchorage Area
..... Unconfirmed Pipeline/Cable	⊗ Obstruction Point
— Project Depth Contour	⊗ Wrecks-Submerged
3 Fluff Thickness (feet)*	★ Beacon, General
● Shoalest Sounding**	◆ Red Navigation Buoy
● Green Navigation Buoy	◆ Green Navigation Buoy

**NOTES:**

Horizontal Coordinate System:  
 North American Datum of 1983 (NAD83), projected to the State Plane Coordinate System (SPCS), Louisiana South Zone. Distance units in U.S. Survey Feet.

Vertical Datum:  
 Soundings are shown in feet and indicate depths below Mean Lower Low Water Datum (MLLW).  
 Datum Relationships for gage 73585 as of December 2013:  
 0.0' NAVD83 (OPUS 2013) = 0.8' MLLW = 1.8' MLG or 0.0' MLLW = 1.0' MLG

Distances on the Calcasieu River are shown at 1 mile intervals.

The location of navigation aids are base on and provided by the U.S. Coast Guard and USACE survey crews.

2022 Aerial Photography data source: PAR LLC  
 Reference is N.O.A.A. Navigation Chart No. 11339.

\* Difference between high and low frequency elevations where greater than 1.0'.  
 \*\* Shoalest Sounding per Quarter per Reach.

\*\*\* High frequency (200 kHz) survey data represents the first signal return at a sounding location and will include suspended solids, known as "fluff", if present. Low frequency (20 kHz) survey data normally penetrates through this "fluff" layer to depict elevations of consolidated bottom material. Low frequency accuracies may vary depending on channel conditions and fathometer settings.

Gage Reading: DM 92 VRN: 0.46 MLLW AVG.  
 Sea Conditions: CHOPPY  
 Vessel Name: MV TECHE  
 Survey Type: CONDITION  
 Sounding Frequency\*\*\*: LOW

Scale: 0 to 1,600 Feet