

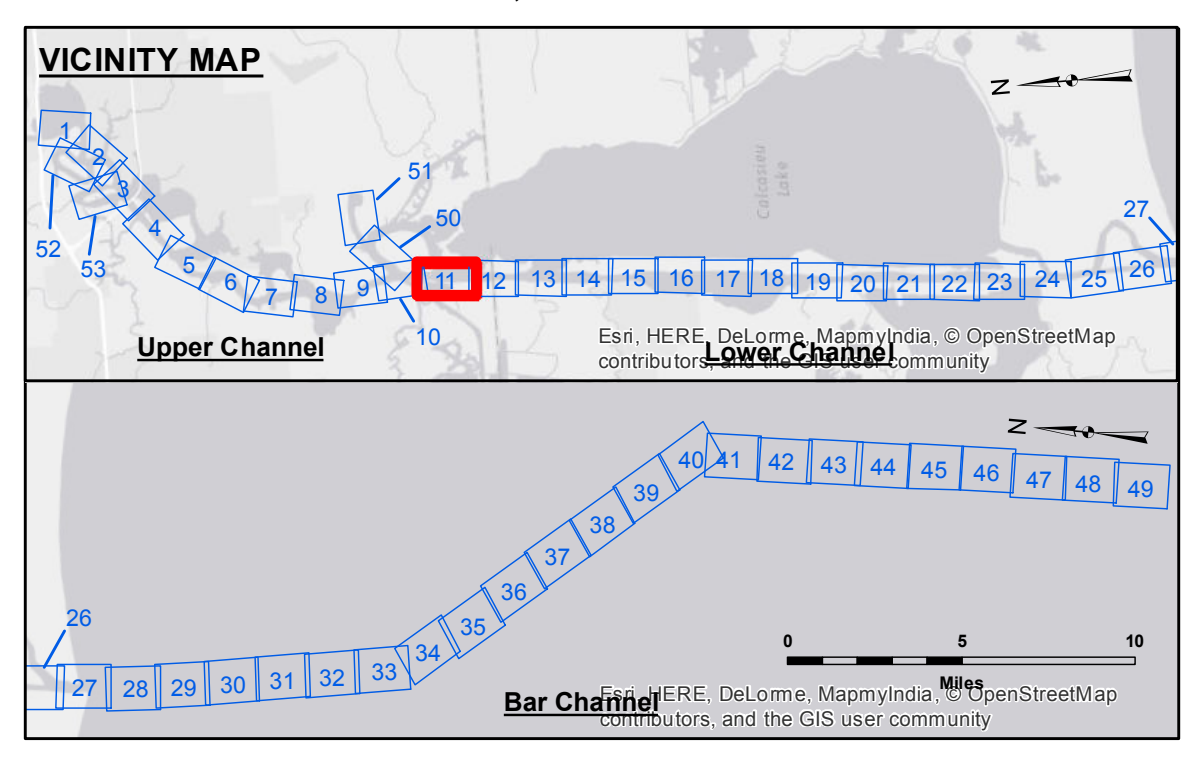
US Army Corps of Engineers District: CEMVN

Accession: The United States Government furnishes these data and the recipient accepts and uses them with the express understanding that the data are not to be used for any purpose other than that for which they were originally prepared, or implied concerning the accuracy, completeness, reliability, usability or suitability for any particular purpose of the recipient. The user is responsible for the results of any use of the data. The Corps does not warrant the accuracy of the data under no liability whatsoever to any person by reason of any use made of the data. These data are being furnished to you under the authority of the Government of the United States of America. The information depicted on this map represents the results of a survey conducted on or about the date shown on the map. The information is not to be used for any purpose other than that for which it was prepared. The information is not to be used for any purpose other than that for which it was prepared. The information is not to be used for any purpose other than that for which it was prepared.

Submitted:	Surveyed By:	PM, JH
Recommended:	Plotted By:	BD
Approved:	Checked By:	AC

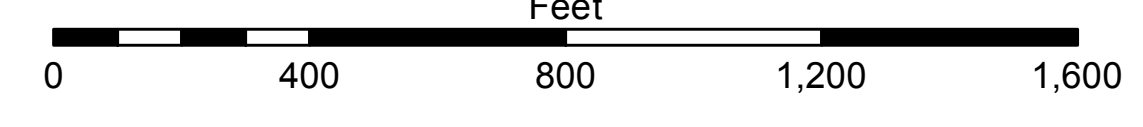
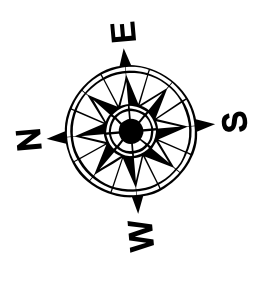
U.S. ARMY CORPS OF ENGINEERS
NEW ORLEANS DISTRICT

**CALCASIEU SHIP CHANNEL
LOWER SHEET 11
CR_11_LWR_20170215
15 February 2017**



LEGEND

--- Federal Navigation Channel	○ Cable Area	3 Fluff Thickness (feet)*	-15' and above
— Federal Navigation Center Line	□ Placement Area	● Shoalest Sounding**	-15' to -20'
— As-built Pipeline/Cable	⊗ Anchorage Area	☆ Beacon, General	-20' to -25'
..... Unconfirmed Pipeline/Cable	⊗ Obstruction Point	◆ Red Navigation Buoy	-25' to -32'
— Project Depth Contour	⊗ Wrecks-Submerged	◆ Green Navigation Buoy	-32' to -38'
			-38' to -40'
			-40' to -42'
			-42' and below



Gage Reading: DM 86: 0.9 MLG
 Sea Conditions: CALM
 Vessel Name: OB-167
 Survey Type: CONDITION
 Sounding Frequency***: LOW

NOTES:

Horizontal Coordinate System:
 North American Datum of 1983 (NAD83), projected to the State Plane Coordinate System (SPCS), Louisiana South Zone. Distance units in U.S. Survey Feet.

Vertical Datum:
 Soundings are shown in feet and indicate depths below Mean Low Gulf Datum (MLG). Datum Relationships for gage 73595 as of December 2013:
 0.0' NAVD83 (OPUS 2013) = 0.9' MLLW = 1.9' MLG or 0.0' MLLW = 1.0' MLG

Distances on the Calcasieu River are shown at 1 mile intervals.

The location of navigation aids are base on and provided by the U.S. Coast Guard and USACE survey crews.

2015 Aerial Photography data source: NAIP

Reference is N.O.A. Navigation Chart No. 11339.

* Difference between high and low frequency elevations where greater than 1.0'.
 ** Shoalest Sounding per Quarter per Reach.
 *** High frequency (200 kHz) survey data represents the first signal return at a sounding location and will include suspended solids, known as "fluff", if present. Low frequency (20 kHz) survey data normally penetrates through this "fluff" layer to depict elevations of consolidated bottom material. Low frequency accuracies may vary depending on channel conditions and fathometer settings.

**Sheet Reference Number
11 of 53**