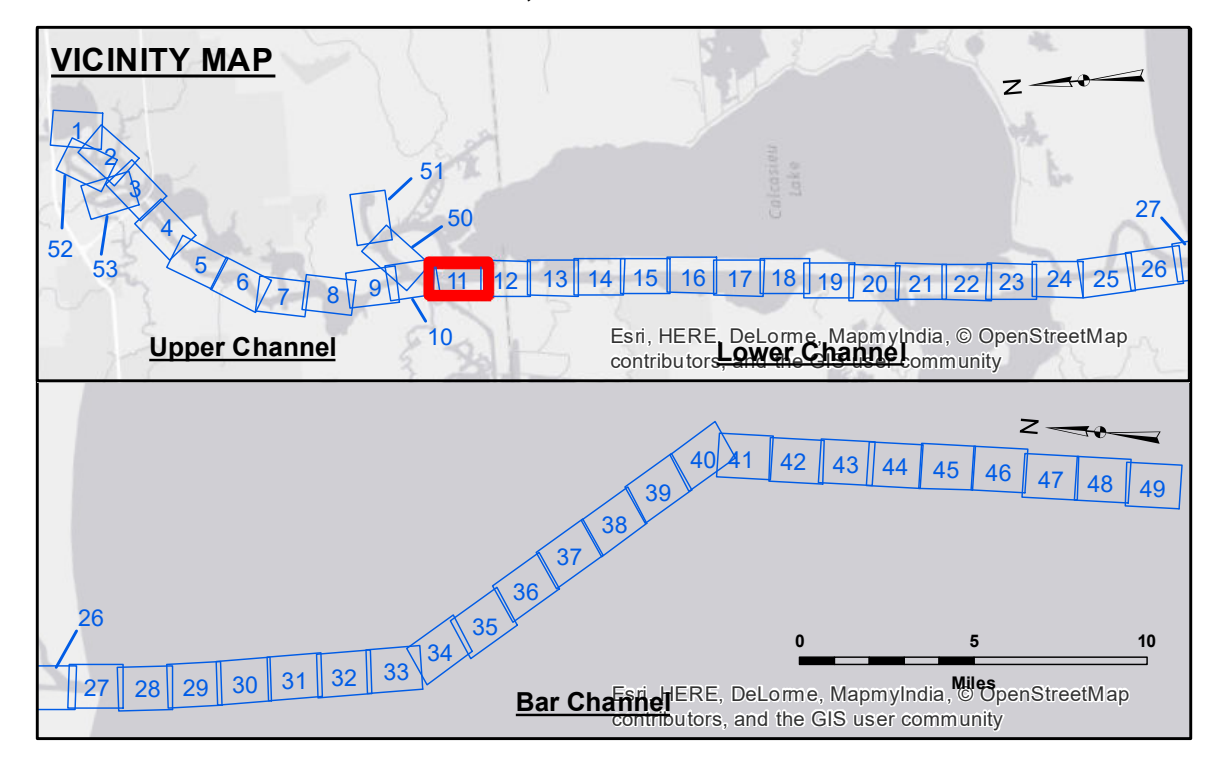


DISCLAIMER
 The information depicted on this map represents the results of a survey conducted on or about the date of the survey. The information is provided for informational purposes only and is not intended to be used for any purpose other than that for which it was collected. The user is responsible for the results of any use of this information. The user is not to be held liable for any damage or injury resulting from the use of this information. The user is not to be held liable for any damage or injury resulting from the use of this information. The user is not to be held liable for any damage or injury resulting from the use of this information.

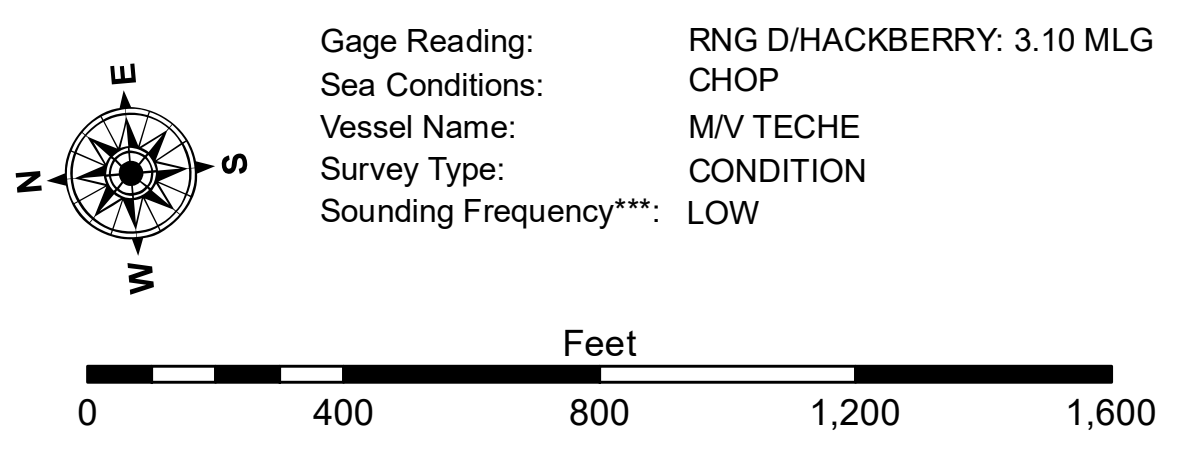
Submitted:	SPSR
Recommended:	AO
Approved:	AO

U.S. ARMY CORPS OF ENGINEERS
 NEW ORLEANS DISTRICT
 Chief, Waterways Maintenance Section

**CALCASIEU SHIP CHANNEL
 LOWER SHEET 11
 CR_11_LWR_20170915_CS
 15 September 2017**



LEGEND	
--- Federal Navigation Channel	● Cable Area
— Federal Navigation Center Line	□ Placement Area
— As-built Pipeline/Cable	□ Anchorage Area
..... Unconfirmed Pipeline/Cable	⊗ Obstruction Point
— Project Depth Contour	⚓ Wrecks-Submerged
3 Fluff Thickness (feet)*	★ Beacon, General
● Shoalest Sounding**	◆ Red Navigation Buoy
● Green Navigation Buoy	



NOTES:
 Horizontal Coordinate System:
 North American Datum of 1983 (NAD83), projected to the State Plane Coordinate System (SPCS), Louisiana South Zone. Distance units in U.S. Survey Feet.
 Vertical Datum:
 Soundings are shown in feet and indicate depths below Mean Low Gulf Datum (MLG).
 Datum Relationships for gage 73595 as of December 2013:
 0.0' NAVD83 (OPUS 2013) = 0.9' MLLW = 1.9' MLG or 0.0' MLLW = 1.0' MLG
 Distances on the Calcasieu River are shown at 1 mile intervals.
 The location of navigation aids are based on and provided by the U.S. Coast Guard and USACE survey crews.
 2015 Aerial Photography data source: NAIP
 Reference is N.O.A. Navigation Chart No. 11339.
 * Difference between high and low frequency elevations where greater than 1.0'.
 ** Shoalest Sounding per Quarter per Reach.
 *** High frequency (200 kHz) survey data represents the first signal return at a sounding location and will include suspended solids, known as "fluff", if present. Low frequency (20 kHz) survey data normally penetrates through this "fluff" layer to depict elevations of consolidated bottom material. Low frequency accuracies may vary depending on channel conditions and fathometer settings.

**Sheet Reference Number
 11 of 53**