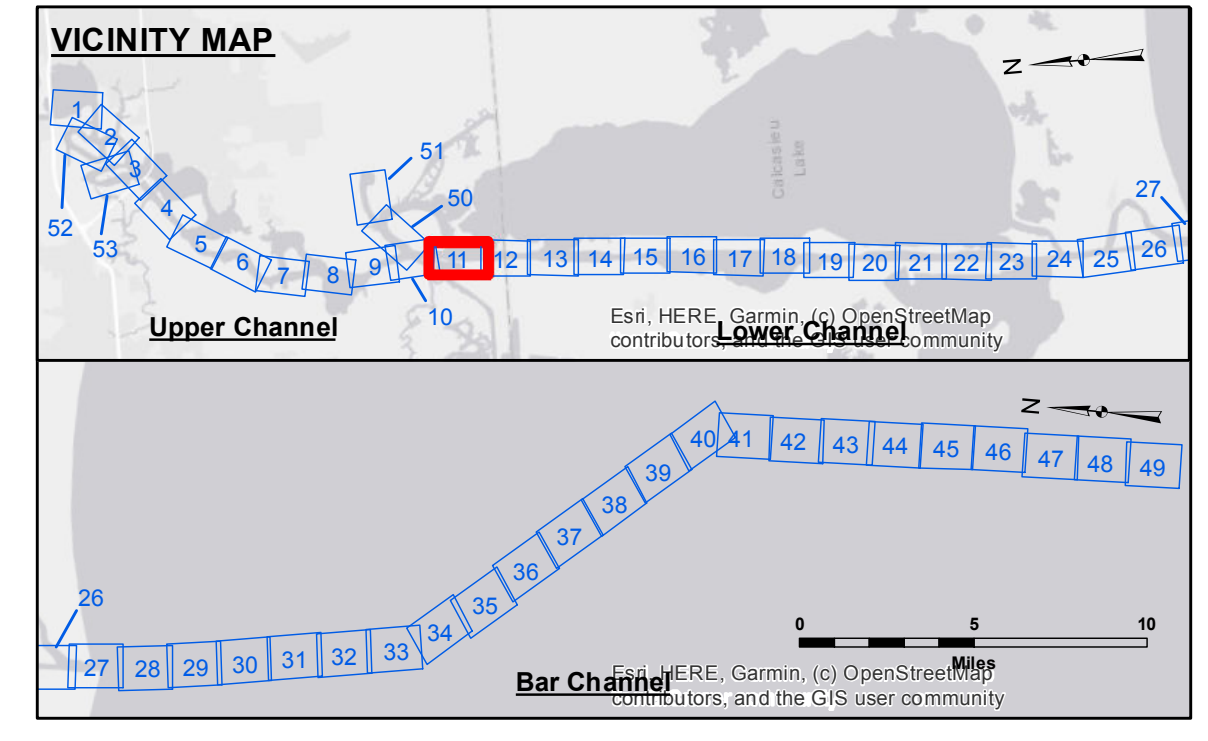


DISCLAIMER
 The information depicted on this map represents the results of a survey conducted by the U.S. Army Corps of Engineers. The user is responsible for the accuracy, completeness, and reliability of the data for their intended use. The Corps of Engineers does not warrant the accuracy, completeness, or reliability of the data for any purpose other than that for which it was collected. The Corps of Engineers does not accept responsibility for changes in the hydrographic conditions which develop after the date of the survey. The Corps of Engineers does not accept responsibility for changes in the hydrographic conditions which develop after the date of the survey. The Corps of Engineers does not accept responsibility for changes in the hydrographic conditions which develop after the date of the survey.

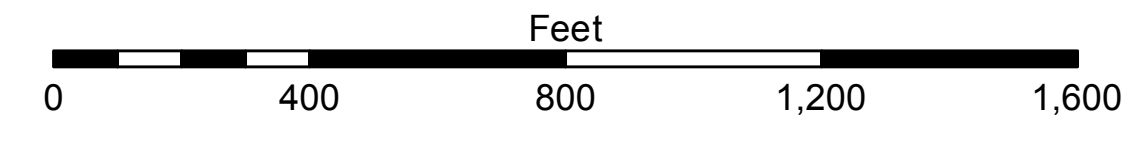
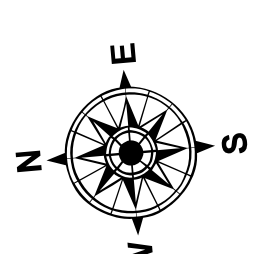
Submitted:	Surveyed By: SWG
Recommended:	Plotted By: JH
Checked:	Checked By: JH
Approved:	Chief, Waterways Maintenance Section

**CALCASIEU SHIP CHANNEL
 LOWER SHEET 11
 CR_11_LWR_20210913_CS_POSTIDA
 13 September 2021**



LEGEND

- Federal Navigation Channel
- Federal Navigation Center Line
- As-built Pipeline/Cable
- Unconfirmed Pipeline/Cable
- Project Depth Contour
- Cable Area
- Placement Area
- ⊗ Anchorage Area
- ⊗ Obstruction Point
- ⊗ Wrecks-Submerged
- 3 Fluff Thickness (feet)*
- Shoalest Sounding**
- ★ Beacon, General
- ◆ Red Navigation Buoy
- ◆ Green Navigation Buoy
- 16' and above
- 16' to -21'
- 21' to -26'
- 26' to -33'
- 33' to -39'
- 39' to -41'
- 41' to -43'
- 43' and below



Gage Reading: HACKBERRY: 1.8' MLLW AVG
 Sea Conditions: CALM
 Vessel Name: SV TURPIN
 Survey Type: CONDITION
 Sounding Frequency***: LOW

NOTES:
 Horizontal Coordinate System: North American Datum of 1983 (NAD83), projected to the State Plane Coordinate System (SPCS), Louisiana South Zone. Distance units in U.S. Survey Feet.
 Vertical Datum: Soundings are shown in feet and indicate depths below Mean Lower Low Water Datum (MLLW). Datum Relationships for gage 73595 as of December 2013: 0.0' NAVD83 (OPUS 2013) = 0.9' MLLW = 1.9' MLG or 0.0' MLLW = 1.0' MLG
 Distances on the Calcasieu River are shown at 1 mile intervals.
 The location of navigation aids are base on and provided by the U.S. Coast Guard and USACE survey crews.
 2015 Aerial Photography data source: NAIP
 Reference is N.O.A. Navigation Chart No. 11339.
 * Difference between high and low frequency elevations where greater than 1.0'.
 ** Shoalest Sounding per Quarter per Reach.
 *** High frequency (200 kHz) survey data represents the first signal return at a sounding location and will include suspended solids, known as "fluff", if present. Low frequency (20 kHz) survey data normally penetrates through this "fluff" layer to depict elevations of consolidated bottom material. Low frequency accuracies may vary depending on channel conditions and fathometer settings.

**Sheet Reference Number
 11 of 53**