

DISCLAIMER

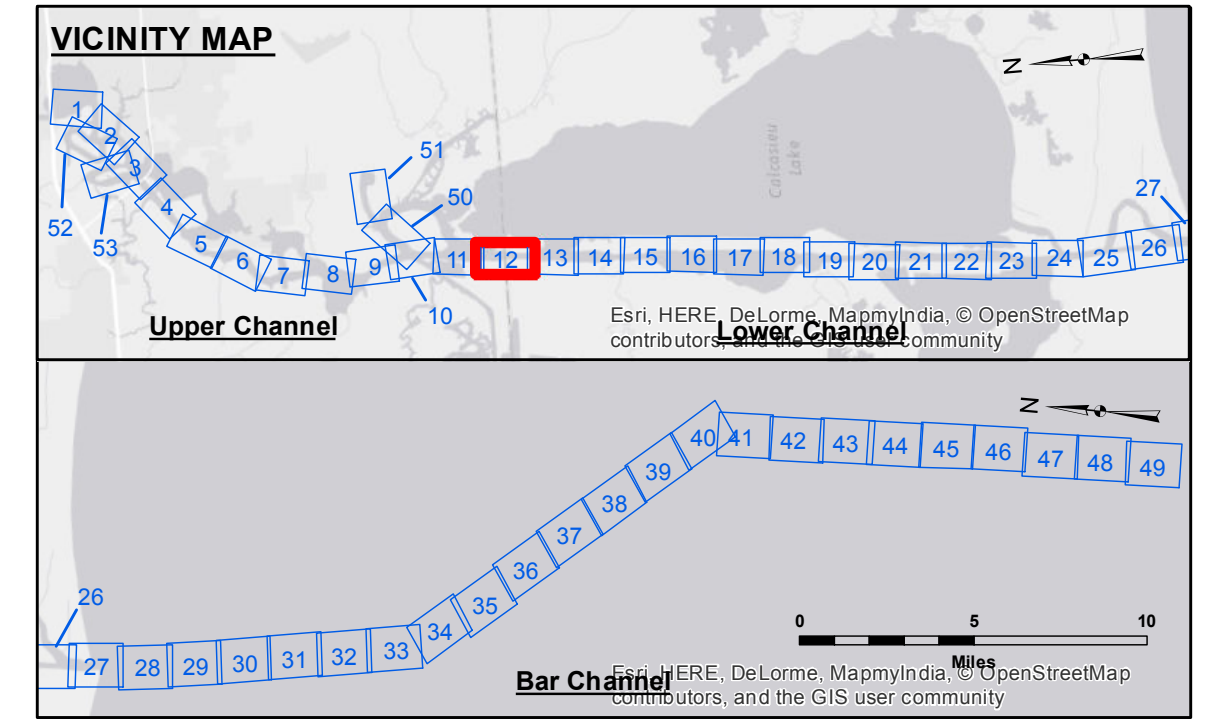
The United States Government furnishes these data and the recipient accepts and uses them with the express understanding that they are not to be used for any purpose other than that for which they were prepared. The user is responsible for the results of any use of these data. The user shall not be held liable for any damage or injury resulting from the use of these data. The user shall also be responsible for the accuracy of the data for other than its intended purpose. The user shall not be held liable for any damage or injury resulting from the use of these data. The user shall also be responsible for the accuracy of the data for other than its intended purpose.

CONTRIBUTORS

The information depicted on this map represents the results of a survey conducted by the U.S. Army Corps of Engineers. The information is not to be used for any purpose other than that for which it was prepared. The user is responsible for the results of any use of this information. The user shall not be held liable for any damage or injury resulting from the use of this information. The user shall also be responsible for the accuracy of the information for other than its intended purpose.

Submitted:	Surveyed By:
Recommended:	SPS:JH
Approved:	Plotted By:
	BTD
	Chief, Survey Section
	Checked By:
	TAF

CALCASIEU SHIP CHANNEL
LOWER SHEET 12
CR_12_LWR_20150714
14 July 2015



LEGEND

--- Federal Navigation Channel	○ Cable Area	□ Borrow Area	■ -15' and above
— Federal Navigation Center Line	□ Placement Area	● Shoalest Sounding**	■ -15' to -20'
— As-built Pipeline/Cable	□ Anchorage Area	☆ Beacon, General	■ -20' to -25'
..... Unconfirmed Pipeline/Cable	⊗ Obstruction Point	◆ Red Navigation Buoy	■ -25' to -32'
— Project Depth Contour	⚓ Wrecks-Submerged	◆ Green Navigation Buoy	■ -32' to -38'
			■ -38' to -40'
			■ -40' to -42'
			■ -42' and below

Gage Reading: DM 86: 2.4 MLG
 Sea Conditions: CALM
 Vessel Name: MV TECHE
 Survey Type: CONDITION
 Sounding Frequency***: LOW

NOTES:

Horizontal Coordinate System:
 North American Datum of 1983 (NAD83), projected to the State Plane Coordinate System (SPCS), Louisiana South Zone. Distance units in U.S. Survey Feet.

Vertical Datum:
 Soundings are shown in feet and indicate depths below Mean Low Gulf Datum (MLG).
 Datum Relationships for gage 73595 as of December 2013:
 0.0' NAVD83 (OPUS 2013) = 0.9' MLLW = 1.9' MLG or 0.0' MLLW = 1.0' MLG

Distances on the Calcasieu River are shown at 1 mile intervals.

The location of navigation aids are based on and provided by the U.S. Coast Guard and USACE survey crews.

2010 Aerial Photography data source: NAIP
 Reference is N.O.A. Navigation Chart No. 11339.

** Shoalest Sounding per Quarter per Reach.

*** High frequency (200 kHz) survey data represents the first signal return at a sounding location and will include suspended solids, known as "fluff", if present. Low frequency (20 kHz) survey data normally penetrates through this "fluff" layer to depict elevations of consolidated bottom material. Low frequency accuracies may vary depending on channel conditions and bathymeter settings.

Sheet Reference Number
12 of 53

Revision Number:
 3.8-0-20150702