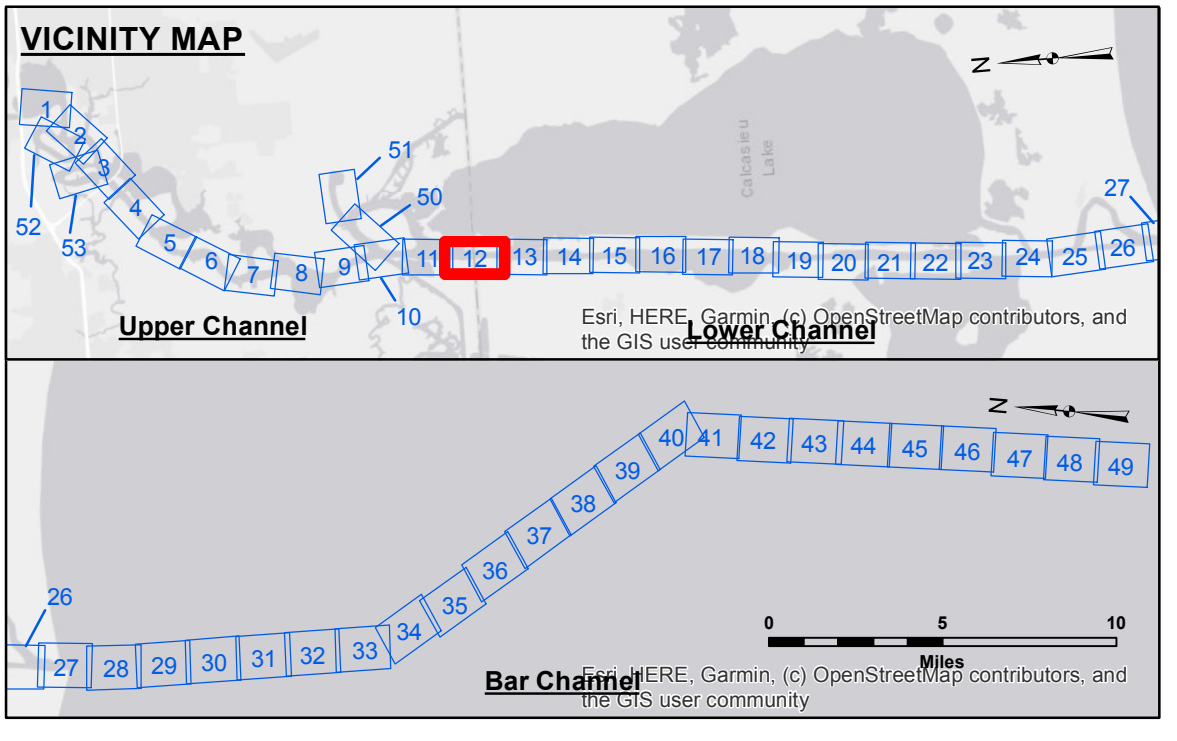


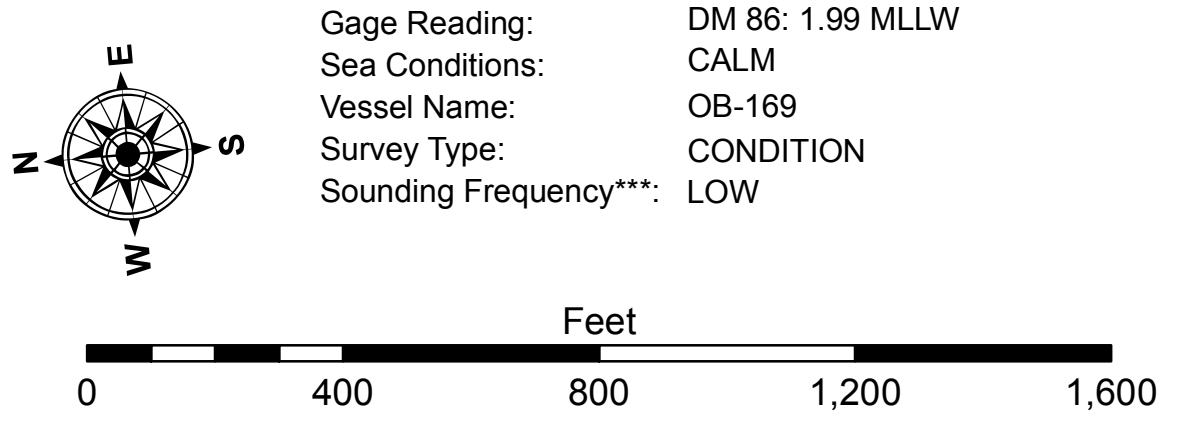
**DISCLAIMER**  
 The United States Government furnishes these data and the recipient accepts and uses them with the express understanding that the data are not to be used for any purpose other than that for which they were originally prepared. The user is responsible for the results of any use of the data for other than its intended purpose.  
 Data Constraints: Hydrographic survey data is subject to change due to several factors including but not limited to: changing hydrographic conditions, changes in the bathymetry of the channel, and changes in the hydrographic conditions which develop after the date of the survey. The user is responsible for the results of any use of the data for other than its intended purpose.  
 The information depicted on this map represents the results of a survey conducted on or about the date shown on the map. It is not to be used for any purpose other than that for which it was prepared. The user is responsible for the results of any use of the data for other than its intended purpose.

U.S. ARMY CORPS OF ENGINEERS NEW ORLEANS DISTRICT	
Submitted:	Surveyed By: RYLAND/MOLLERE
Recommended:	Plotted By: BD
Approved:	Checked By: AC

**CALCASIEU SHIP CHANNEL  
 LOWER SHEET 12  
 CR\_12\_LWR\_20210616\_CS  
 16 June 2021**



LEGEND			
--- Federal Navigation Channel	○ Cable Area	3 Fluff Thickness (feet)*	-16' and above
— Federal Navigation Center Line	□ Placement Area	● Shoalest Sounding**	-16' to -21'
— As-built Pipeline/Cable	□ Anchorage Area	★ Beacon, General	-21' to -26'
..... Unconfirmed Pipeline/Cable	⊗ Obstruction Point	◆ Red Navigation Buoy	-26' to -33'
— Project Depth Contour	⚓ Wrecks-Submerged	◆ Green Navigation Buoy	-33' to -39'
			-39' to -41'
			-41' to -43'
			-43' and below



**Sheet Reference Number  
 12 of 53**