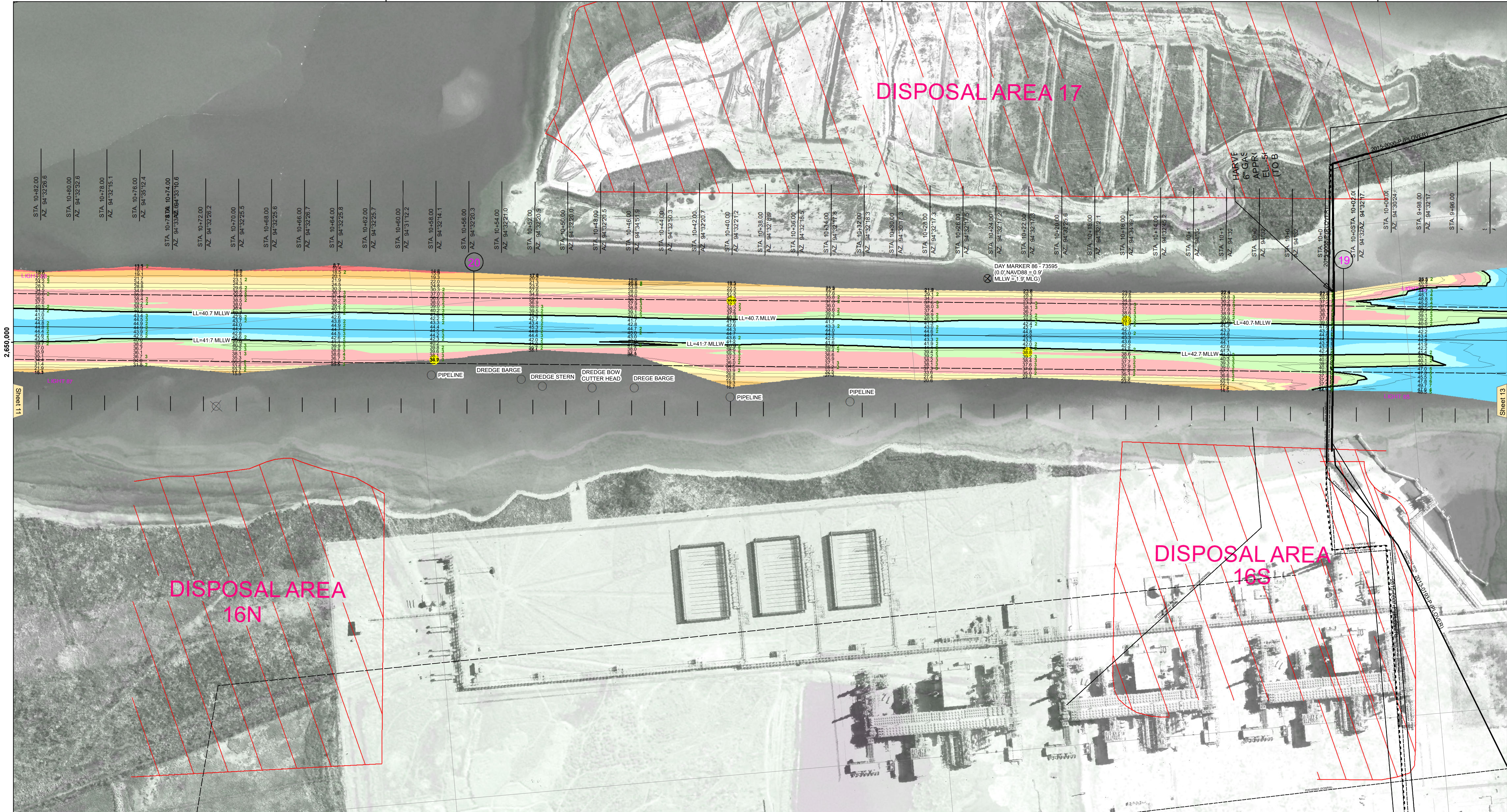


572,000

569,000

566,000

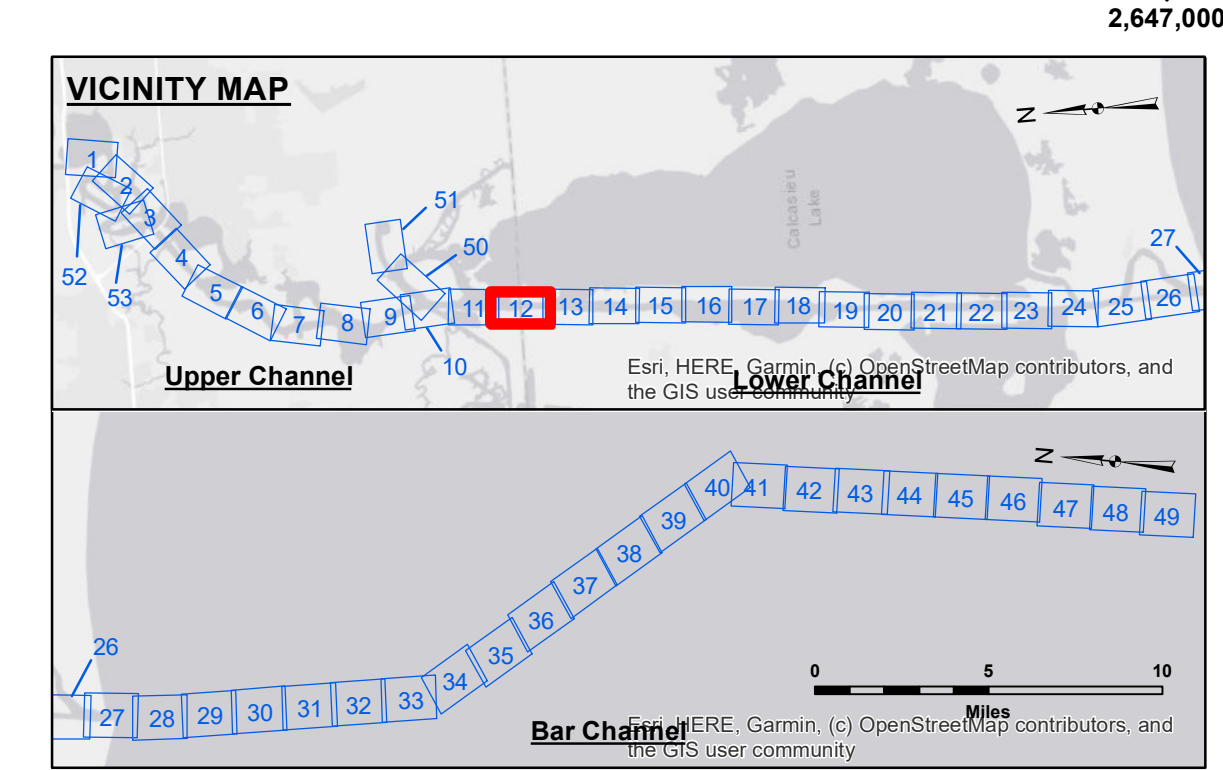


2,650,000

2,650,000

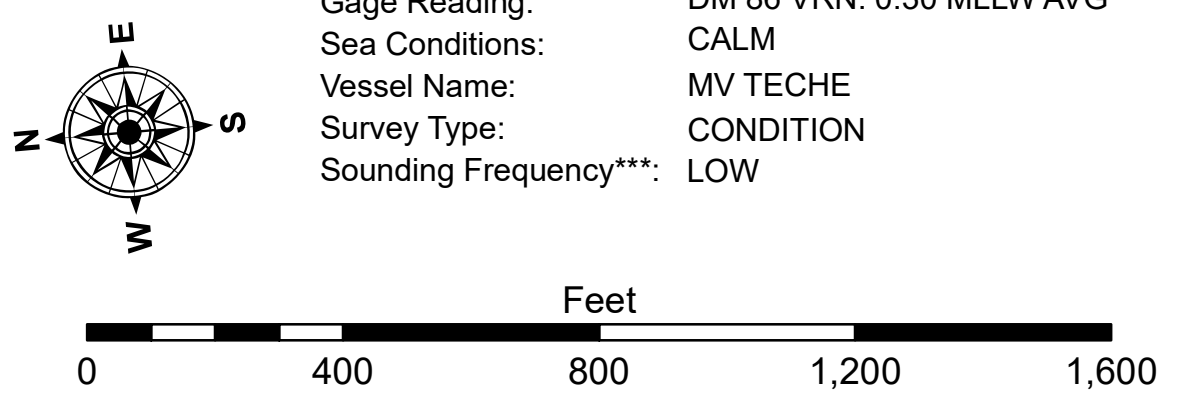
Sheet 11

Sheet 13



**LEGEND**

--- Federal Navigation Channel	○ Cable Area	3 Fluff Thickness (feet)*	■ -16' and above
— Federal Navigation Center Line	□ Placement Area	● Shoalest Sounding**	■ -16' to -21'
— As-built Pipeline/Cable	□ Anchorage Area	☆ Beacon, General	■ -21' to -26'
..... Unconfirmed Pipeline/Cable	⊗ Obstruction Point	◆ Red Navigation Buoy	■ -26' to -33'
— Project Depth Contour	⚓ Wrecks-Submerged	◆ Green Navigation Buoy	■ -33' to -39'
			■ -39' to -41'
			■ -41' to -43'
			■ -43' and below



**NOTES:**  
 Horizontal Coordinate System:  
 North American Datum of 1983 (NAD83), projected to the State Plane  
 Coordinate System (SPCS), Louisiana South Zone. Distance units in U.S. Survey Feet.  
 Vertical Datum:  
 Soundings are shown in feet and indicate depths below Mean Lower Low Water Datum (MLLW).  
 Datum Relationships for gage 73595 as of December 2013:  
 0.0 NAVD83 (OPUS 2013) = 0.9' MLLW = 1.9' MLG or 0.0' MLLW = 1.0' MLG  
 Distances on the Calcasieu River are shown at 1 mile intervals.  
 The location of navigation aids are base on and provided by the U.S. Coast Guard  
 and USACE survey crews.  
 2022 Aerial Photography data source: PAR LLC  
 Reference is N.O.A. Navigation Chart No. 11339.  
 \* Difference between high and low frequency elevations where greater than 1.0'.  
 \*\* Shoalest Sounding per Quarter Reach.  
 \*\*\* High frequency (200 kHz) survey data represents the first signal return at a sounding  
 location and will include suspended solids, known as "fluff", if present. Low frequency (20 kHz)  
 survey data normally penetrates through the "fluff" layer to depict elevations of consolidated bottom  
 material. Low frequency accuracies may vary depending on channel conditions and fathometer  
 settings.

U.S. ARMY CORPS OF ENGINEERS  
 NEW ORLEANS DISTRICT

Submitted:	Surveyed By: SP-JS	Plotted By: JH	Checked By: JH
Recommended:	Chart Survey Section		
Approved:	Chart, Waterways Maintenance Section		

**CALCASIEU SHIP CHANNEL  
 LOWER SHEET 12  
 CR\_12\_LWR\_20240130\_CS  
 30 January 2024**

**Sheet  
 Reference  
 Number  
 12 of 53**

Revision Number:  
 4-2-2024(04/28)

**DISCLAIMER**  
 The United States Government furnishes this data and the recipient accepts and uses them with the express understanding that it is only valid for its intended use, content, time and accuracy specifications. The user is responsible for the results of its use. The user shall be held harmless for any damages, including reasonable attorneys' fees, arising from its use of this data for other than its intended purpose.  
 Data Constants: Hydrographic survey data is subject to change due to several factors including but not limited to changing hydrographic conditions, instrument accuracy, and operator error. The information depicted on this map represents the results of a hydrographic survey conducted on the date of the survey. It is not intended to represent the general condition existing at that time.  
 Distribution Liability: The data represents the results of data collection/processing for a specific US Army Corps of Engineers project. It is not intended for use in any other project or for any other purpose. The user is responsible for the results of its use. The user shall be held harmless for any damages, including reasonable attorneys' fees, arising from its use of this data for other than its intended purpose.  
 Data Constants: Hydrographic survey data is subject to change due to several factors including but not limited to changing hydrographic conditions, instrument accuracy, and operator error. The information depicted on this map represents the results of a hydrographic survey conducted on the date of the survey. It is not intended to represent the general condition existing at that time.  
 Distribution Liability: The data represents the results of data collection/processing for a specific US Army Corps of Engineers project. It is not intended for use in any other project or for any other purpose. The user is responsible for the results of its use. The user shall be held harmless for any damages, including reasonable attorneys' fees, arising from its use of this data for other than its intended purpose.

