

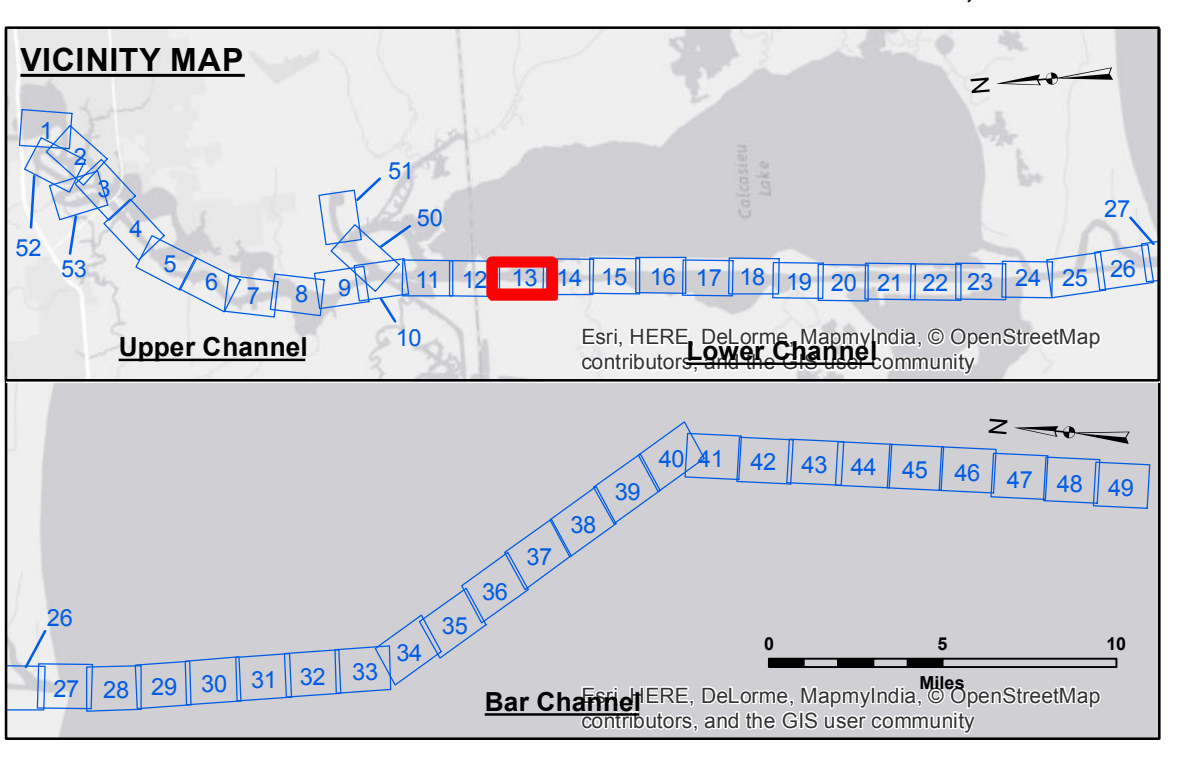


**DISCLAIMER**  
 The United States Government furnishes these data and the recipient accepts and uses them with the express understanding that the data are not to be used for any purpose other than that for which they were originally intended. The user is responsible for the results of any use of the data for other than its intended purpose.  
 Data Constants: Hydrographic survey data is subject to change due to several factors including but not limited to dredging, shoaling, and other changes in the channel. The user is responsible for the results of any use of the data for other than its intended purpose.  
 The information depicted on the map represents the results of a survey conducted on the date of the survey. It is not intended to represent the general condition existing at that time.

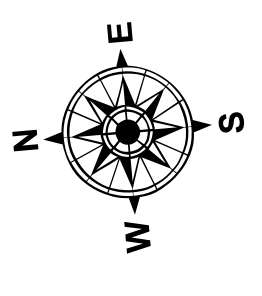
U.S. ARMY CORPS OF ENGINEERS NEW ORLEANS DISTRICT		
Submitted:	Surveyed By: SRJDH	Plotted By: BTD
Recommended: Chief, Survey Section	Checked By: TAF	
Approved:	Chief, Waterways Maintenance Section	

**CALCASIEU SHIP CHANNEL  
 LOWER SHEET 13  
 CR\_13\_LWR\_20151027  
 27 October 2015**

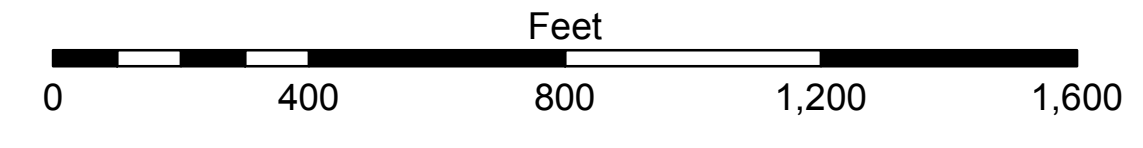
**Sheet Reference Number  
 13 of 53**



LEGEND		Color Key	
--- Federal Navigation Channel	○ Cable Area	Red	-15' and above
— Federal Navigation Center Line	□ Placement Area	Orange	-15' to -20'
— As-built Pipeline/Cable	○ Shoalest Sounding**	Yellow	-20' to -25'
..... Unconfirmed Pipeline/Cable	□ Anchorage Area	Light Green	-25' to -32'
— Project Depth Contour	⊗ Obstruction Point	Green	-32' to -38'
	★ Beacon, General	Light Blue	-38' to -40'
	◆ Red Navigation Buoy	Blue	-40' to -42'
	◆ Green Navigation Buoy	Dark Blue	-42' and below
	⚓ Wrecks-Submerged		
	□ Borrow Area		



Gage Reading: DM 86: 1.6 MLG  
 Sea Conditions: CALM  
 Vessel Name: M/V TECHE  
 Survey Type: CONDITION  
 Sounding Frequency\*\*\*: LOW



**NOTES:**  
 Horizontal Coordinate System: North American Datum of 1983 (NAD83), projected to the State Plane Coordinate System (SPCS), Louisiana South Zone. Distance units in U.S. Survey Feet.  
 Vertical Datum: Soundings are shown in feet and indicate depths below Mean Low Gull Datum (MLG). Datum Relationships for gage 73995 as of December 2013: 0.0' NAVD83 (OPUS 2013) = 0.9' MLLW = 1.9' MLG or 0.0' MLLW = 1.0' MLG  
 Distances on the Calcasieu River are shown at 1 mile intervals.  
 The location of navigation aids are based on and provided by the U.S. Coast Guard and USACE survey crews.  
 2010 Aerial Photography data source: NAIP  
 Reference is N.O.A.A. Navigation Chart No. 11339.  
 \*\* Shoalest Sounding per Quarter per Reach.  
 \*\*\* High frequency (200 kHz) survey data represents the first signal return at a sounding location and will include suspended solids, known as "fluff", if present. Low frequency (20 kHz) survey data normally penetrates through this "fluff" layer to depict elevations of consolidated bottom material. Low frequency accuracies may vary depending on channel conditions and fathometer settings.