

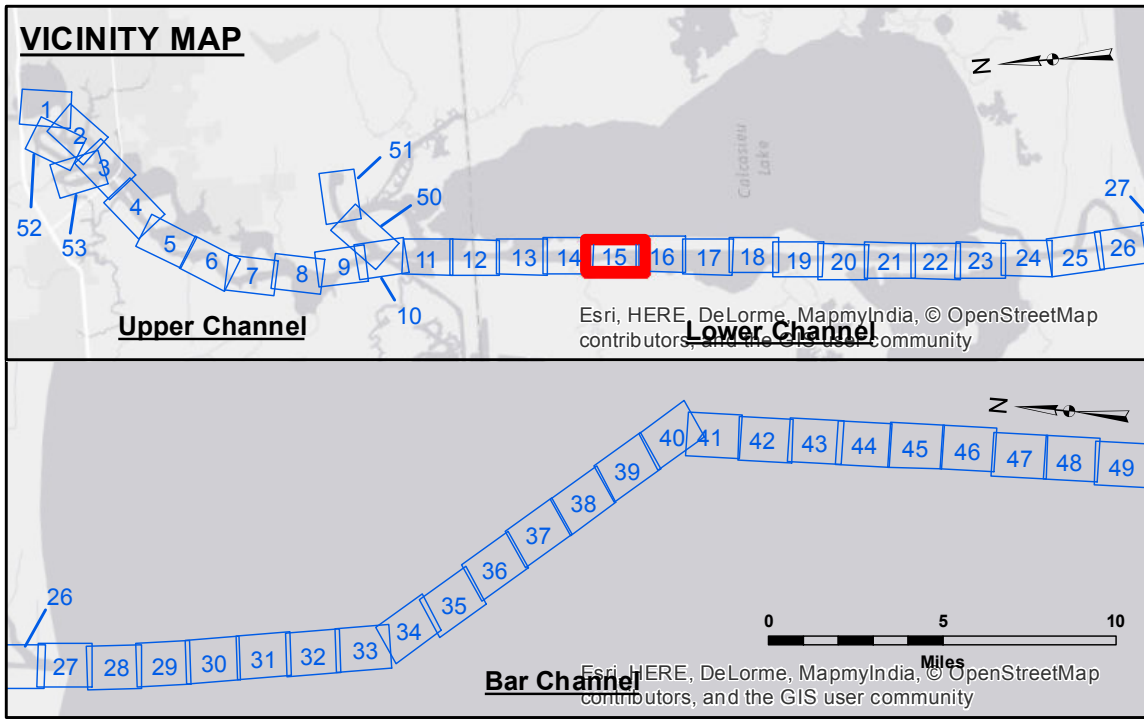
Accession: The United States Government furnishes these data and the recipient accepts and uses them with the express understanding that the data are not to be used for any purpose other than that for which they were originally prepared, and that the user is responsible for the results obtained therefrom. The user is responsible for the results obtained therefrom. The user is responsible for the results obtained therefrom. The user is responsible for the results obtained therefrom.

Distribution Liability: The data represents the results of data collection for a specific US Army Corps of Engineers project and is only valid for its intended use, content, time and accuracy specifications. The user is responsible for the results obtained therefrom. The user is responsible for the results obtained therefrom. The user is responsible for the results obtained therefrom.

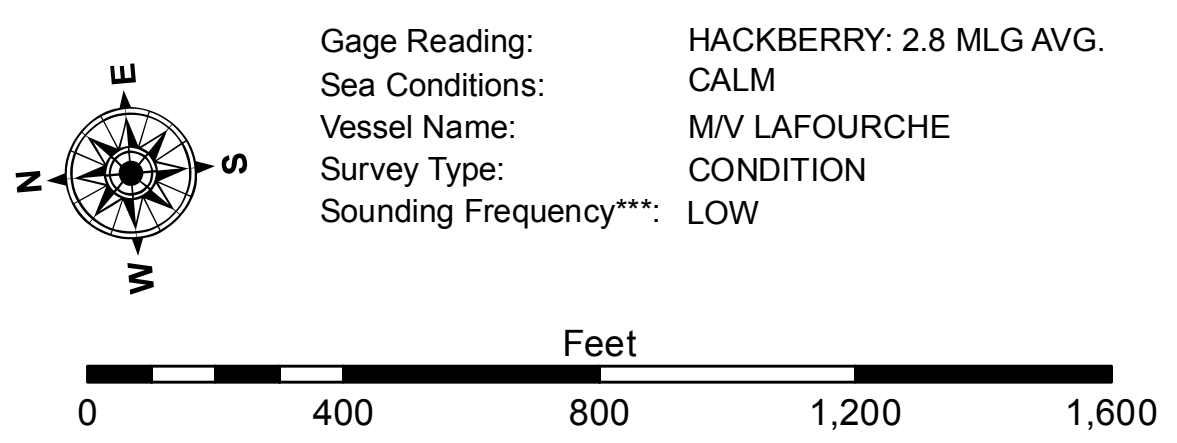
Disclaimer: The information depicted on this map represents the results of a survey conducted on the ground conditions existing at that time. The information depicted on this map represents the results of a survey conducted on the ground conditions existing at that time. The information depicted on this map represents the results of a survey conducted on the ground conditions existing at that time.

U.S. ARMY CORPS OF ENGINEERS NEW ORLEANS DISTRICT	
Submitted:	Surveyed By: JH/SPS
Recommended:	Plotted By: BID
Approved:	Chief, Survey Section
	Checked By: TAF

**CALCASIEU SHIP CHANNEL
LOWER SHEET 15
CR_15_LWR_20150122
22 January 2015**



LEGEND	
--- Federal Navigation Channel	● Cable Area
— Federal Navigation Center Line	□ Placement Area
— As-built Pipeline/Cable	□ Anchorage Area
..... Unconfirmed Pipeline/Cable	⊗ Obstruction Point
— Project Depth Contour	⊗ Wrecks-Submerged
□ Borrow Area	★ Beacon, General
● Shoalest Sounding**	◆ Red Navigation Buoy
★ Beacon, General	◆ Green Navigation Buoy
◆ Red Navigation Buoy	
◆ Green Navigation Buoy	



NOTES:
Horizontal Coordinate System: North American Datum of 1983 (NAD83), projected to the State Plane Coordinate System (SPCS), Louisiana South Zone. Distance units in U.S. Survey Feet.
Vertical Datum: Hackberry: 2.8 MLG AVG.
Soundings are shown in feet and indicate depths below Mean Low Gull Datum (MLG).
Datum Relationships for gage 73600 as of December 2013:
0.0' NAVD83 (OPUS 2010) = 1.0' MLLW = 2.0' MLG or 0.0' MLLW = 1.0' MLG
Distances on the Calcasieu River are shown at 1 mile intervals.
The location of navigation aids are based on and provided by the U.S. Coast Guard and USACE survey crews.
2010 Aerial Photography data source: NAIP
Reference is N.O.A.A. Navigation Chart No. 11339.
** Shoalest Sounding per Quarter per Reach.
*** High frequency (200 kHz) survey data represents the first signal return at a sounding location and will include suspended solids, known as "fluff", if present. Low frequency (20 kHz) survey data normally penetrates through this "fluff" layer to depict elevations of consolidated bottom material. Low frequency accuracies may vary depending on channel conditions and fathometer settings.

**Sheet Reference Number
15 of 53**