

Accession: The United States Government furnishes these data and the recipient accepts and uses them with the express understanding that the data are not to be used for any purpose other than that for which they were originally prepared, and that the user is responsible for the results obtained. The user is responsible for the results obtained. The user is responsible for the results obtained. The user is responsible for the results obtained.

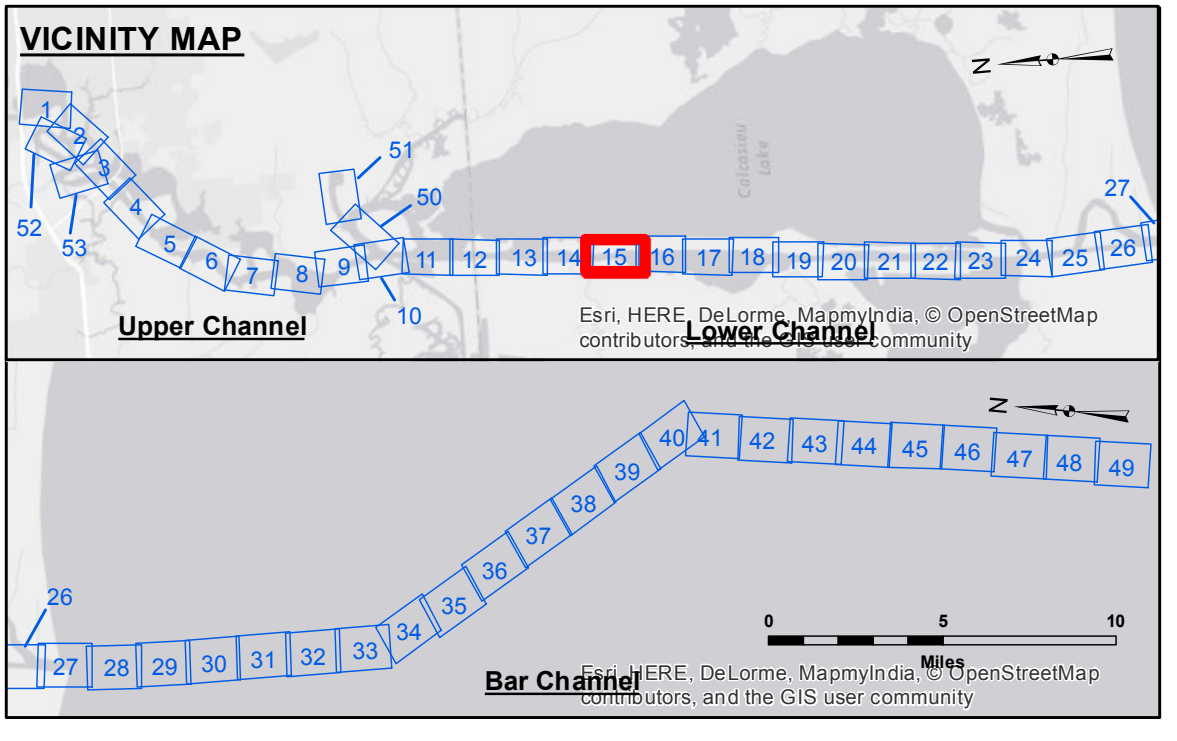
Distribution Liability: The data represents the results of data collection for a specific US Army Corps of Engineers project and is only valid for its intended use, including time and accuracy specifications. The user is responsible for the results obtained. The user is responsible for the results obtained. The user is responsible for the results obtained.

Disclaimer: The information depicted on this map represents the results of a survey conducted on or about the date indicated. The information is not to be used for any purpose other than that for which it was originally prepared, and the user is responsible for the results obtained. The user is responsible for the results obtained. The user is responsible for the results obtained.

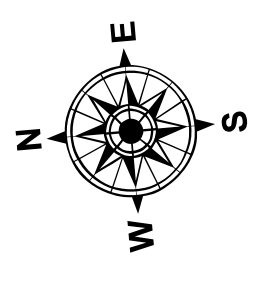
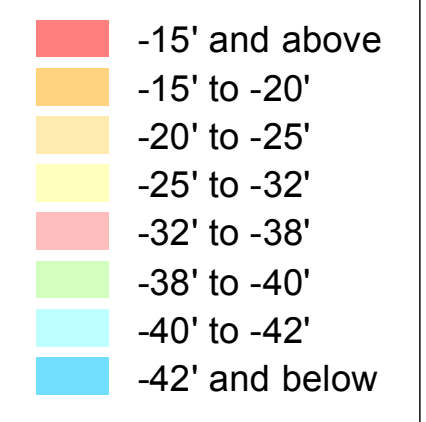
Submitted:	Surveyed By:	SPS:JH
Recommended:	Plotted By:	BITD
Approved:	Chief, Survey Section	
	Chief, Waterways Maintenance Section	TAF

**CALCASIEU SHIP CHANNEL
LOWER SHEET 15
CR_15_LWR_20150714
14 July 2015**

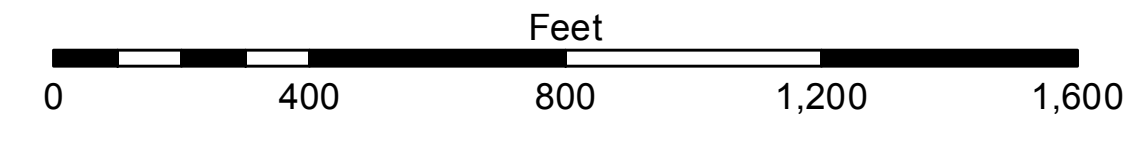
**Sheet Reference Number
15 of 53**



LEGEND	
--- Federal Navigation Channel	● Cable Area
— Federal Navigation Center Line	□ Placement Area
— As-built Pipeline/Cable	□ Anchorage Area
..... Unconfirmed Pipeline/Cable	⊗ Obstruction Point
— Project Depth Contour	⊗ Wrecks-Submerged
□ Borrow Area	★ Beacon, General
● Shoalest Sounding**	◆ Red Navigation Buoy
★ Beacon, General	◆ Green Navigation Buoy



Gage Reading: HACKBERRY: 2.4 MLG
Sea Conditions: CALM
Vessel Name: MV TECHE
Survey Type: CONDITION
Sounding Frequency***: LOW



NOTES:
Horizontal Coordinate System: North American Datum of 1983 (NAD83), projected to the State Plane Coordinate System (SPCS), Louisiana South Zone. Distance units in U.S. Survey Feet.
Vertical Datum: Soundings are shown in feet and indicate depths below Mean Low Gull Datum (MLG). Datum Relationships for gage 73600 as of December 2013: 0.0' NAVD83 (OPUS 2010) = 1.0' MLLW = 2.0' MLG or 0.0' MLLW = 1.0' MLG
Distances on the Calcasieu River are shown at 1 mile intervals.
The location of navigation aids are based on and provided by the U.S. Coast Guard and USACE survey crews.
2010 Aerial Photography data source: NAIP
Reference is N.O.A.A. Navigation Chart No. 11339.
** Shoalest Sounding per Quarter per Reach.
*** High frequency (200 kHz) survey data represents the first signal return at a sounding location and will include suspended solids, known as "fluff", if present. Low frequency (20 kHz) survey data normally penetrates through this "fluff" layer to depict elevations of consolidated bottom material. Low frequency accuracies may vary depending on channel conditions and fathometer settings.