

US Army Corps of Engineers District: CEMVN

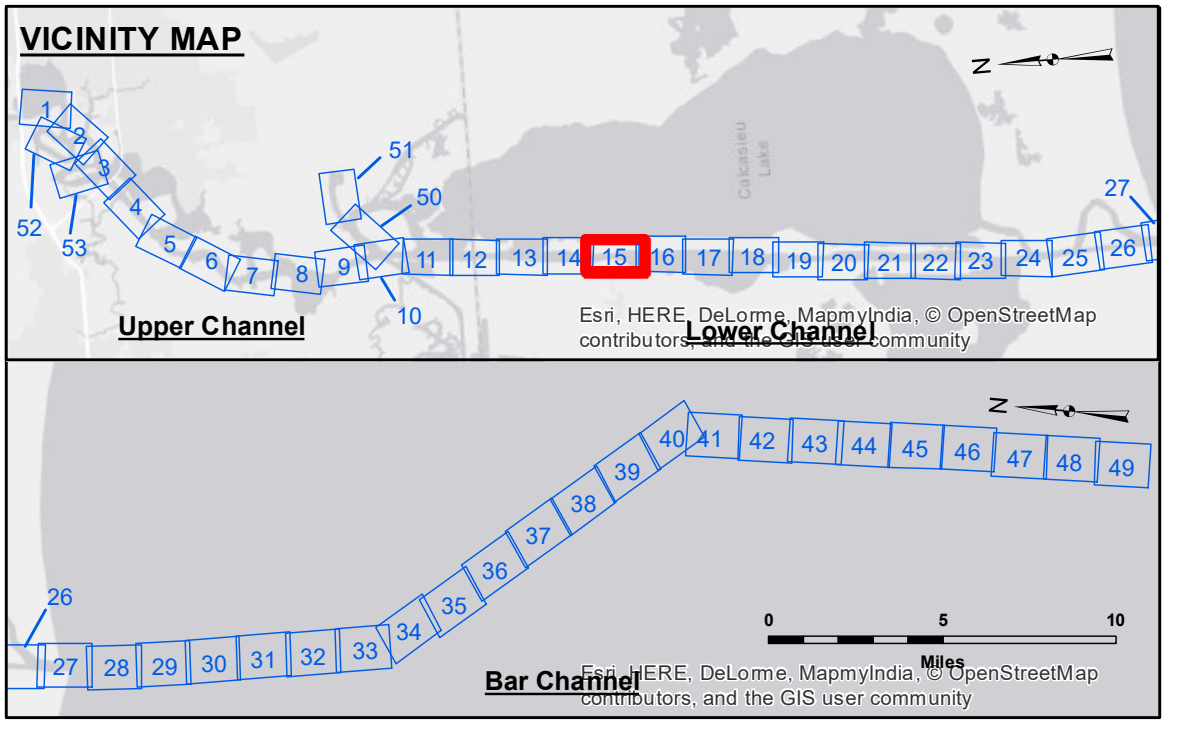
Access/Use: The data represents the results of data collection for a specific US Army Corps of Engineers project. The data is not intended for use in any other project. The user is responsible for the results and accuracy of the data. The user is responsible for the results and accuracy of the data. The user is responsible for the results and accuracy of the data.

Access/Use: The United States Government furnishes these data and the recipient accepts and uses them with the express understanding that the data are not intended for use in any other project. The user is responsible for the results and accuracy of the data. The user is responsible for the results and accuracy of the data. The user is responsible for the results and accuracy of the data.

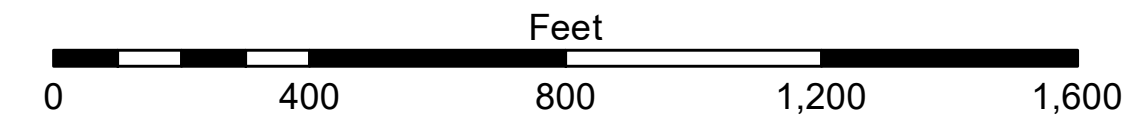
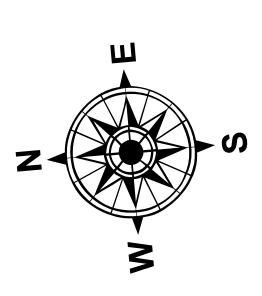
Submitted:	Surveyed By:	PS, JH
Recommended:	Plotted By:	BD
Approved:	Chief, Survey Section	AC
	Chief, Waterways Maintenance Section	

CALCASIEU SHIP CHANNEL LOWER SHEET 15
CR_15_LWR_20180221_CS
21 February 2018

Sheet Reference Number
15 of 53



LEGEND	
--- Federal Navigation Channel	● Cable Area
— Federal Navigation Center Line	□ Placement Area
— As-built Pipeline/Cable	□ Anchorage Area
..... Unconfirmed Pipeline/Cable	⊗ Obstruction Point
— Project Depth Contour	⊗ Wrecks-Submerged
3 Fluff Thickness (feet)*	● Shoalest Sounding**
★ Beacon, General	◆ Red Navigation Buoy
◆ Green Navigation Buoy	



Gage Reading: HACKBERRY: 3.10 AVG.
 Sea Conditions: CHOPPY
 Vessel Name: M/V LAFOURCHE
 Survey Type: CONDITION
 Sounding Frequency***: LOW

NOTES:
 Horizontal Coordinate System: North American Datum of 1983 (NAD83), projected to the State Plane Coordinate System (SPCS), Louisiana South Zone. Distance units in U.S. Survey Feet.
 Vertical Datum: Soundings are shown in feet and indicate depths below Mean Low Gulf Datum (MLG). Datum Relationships for gage 73600 as of December 2013: 0.0' NAVD88 (OPUS 2010) = 1.0' MLLW = 2.0' MLG or 0.0' MLLW = 1.0' MLG
 Distances on the Calcasieu River are shown at 1 mile intervals.
 The location of navigation aids are base on and provided by the U.S. Coast Guard and USACE survey crews.
 2015 Aerial Photography data source: NAIP
 Reference is N.O.A.A. Navigation Chart No. 11339.
 * Difference between high and low frequency elevations where greater than 1.0'.
 ** Shoalest Sounding per Quarter per Reach.
 *** High frequency (200 kHz) survey data represents the first signal return at a sounding location and will include suspended solids, known as "fluff", if present. Low frequency (20 kHz) survey data normally penetrates through this "fluff" layer to depict elevations of consolidated bottom material. Low frequency accuracies may vary depending on channel conditions and fathometer settings.