

**US Army Corps of Engineers District: CEMVN**

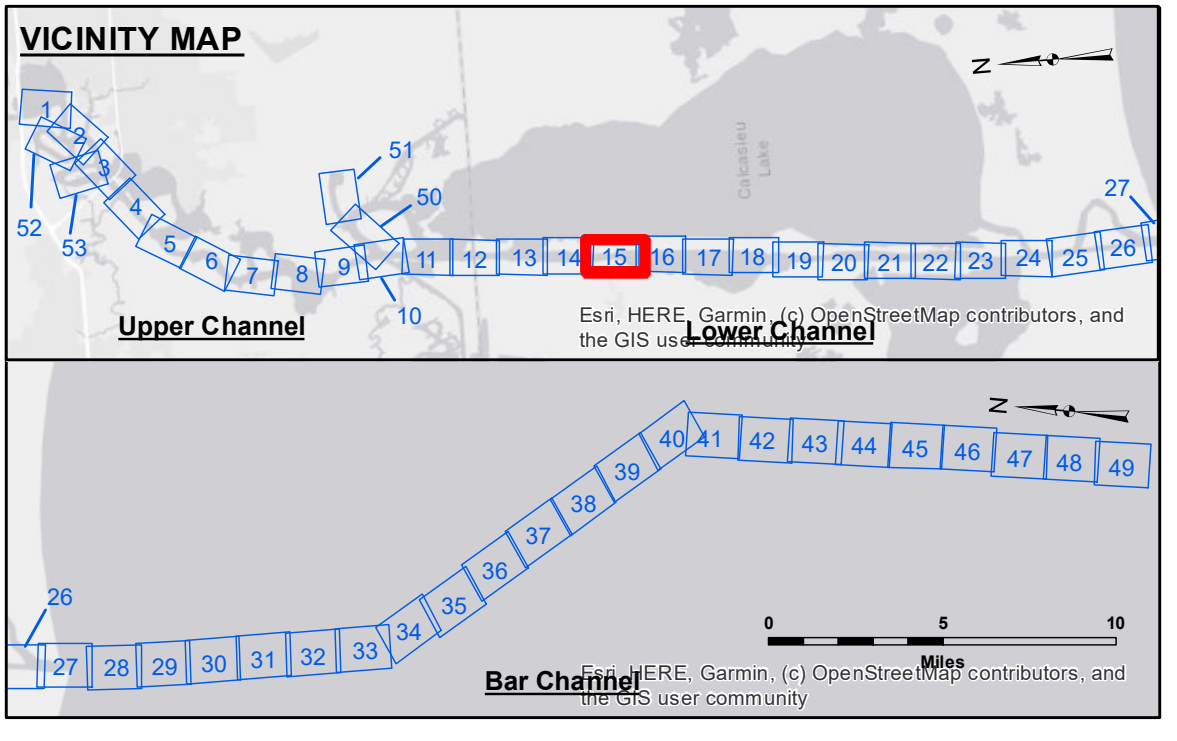
**Access/Use:** The United States Government furnishes these data and the recipient accepts and uses them with the express understanding that they are for official use only and are not to be distributed, reproduced, or used for any purpose other than that for which they were prepared. The user is responsible for the results of any use of these data. The Corps of Engineers does not accept any liability for damages or injury resulting from the use of these data. The Corps of Engineers does not accept any liability for damages or injury resulting from the use of these data.

Submitted:	Surveyed By: SPDS
Recommended:	Plotted By: BD
Approved:	Checked By: AC

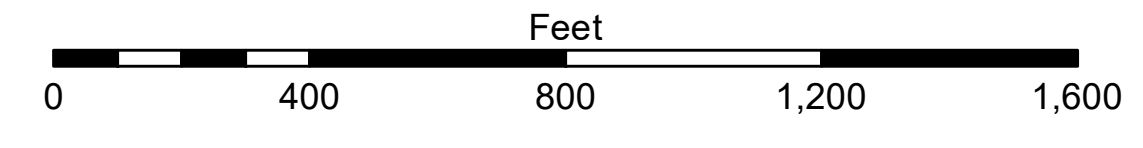
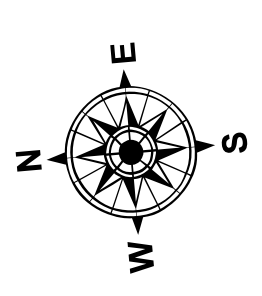
U.S. ARMY CORPS OF ENGINEERS  
NEW ORLEANS DISTRICT

**CALCASIEU SHIP CHANNEL  
LOWER SHEET 15  
CR\_15\_LWR\_20200831\_CS\_POSTSTORM  
31 August 2020**

**Sheet Reference Number  
15 of 53**



LEGEND		
--- Federal Navigation Channel	○ Cable Area	3 Fluff Thickness (feet)*
— Federal Navigation Center Line	□ Placement Area	● Shoalest Sounding**
— As-built Pipeline/Cable	□ Anchorage Area	★ Beacon, General
..... Unconfirmed Pipeline/Cable	⊗ Obstruction Point	◆ Red Navigation Buoy
— Project Depth Contour	⊗ Wrecks-Submerged	◆ Green Navigation Buoy



Gage Reading: HACKBERRY: 2.6 MLLW  
Sea Conditions: CHOPPY  
Vessel Name: OB-169  
Survey Type: CONDITION  
Sounding Frequency\*\*\*: LOW

**NOTES:**  
Horizontal Coordinate System: North American Datum of 1983 (NAD83), projected to the State Plane Coordinate System (SPCS), Louisiana South Zone. Distance units in U.S. Survey Feet.  
Vertical Datum: Soundings are shown in feet and indicate depths below Mean Lower Low Water Datum (MLLW). Datum Relationships for gage 73600 as of December 2013: 0.0' NAVD88 (OPUS 2010) = 1.0' MLLW = 2.0' MLG or 0.0' MLLW = 1.0' MLLW  
Distances on the Calcasieu River are shown at 1 mile intervals.  
The location of navigation aids are based on and provided by the U.S. Coast Guard and USACE survey crews.  
2015 Aerial Photography data source: NAIP  
Reference is N.O.A. Navigation Chart No. 11339.  
\* Difference between high and low frequency elevations where greater than 1.0'.  
\*\* Shoalest Sounding per Quarter per Reach.  
\*\*\* High frequency (200 kHz) survey data represents the first signal return at a sounding location and will include suspended solids, known as "fluff", if present. Low frequency (20 kHz) survey data normally penetrates through this "fluff" layer to depict elevations of consolidated bottom material. Low frequency accuracies may vary depending on channel conditions and fathometer settings.