

DISCLAIMER
 The data represented on this map was derived from the results of data collection/processing for a specific US Army Corps of Engineers project. The data is only valid for its intended use, context, time and accuracy specifications. The user is responsible for the results of any application of the data for other than its intended purpose.
 The information depicted on this map represents the results of a hydrographic survey which was conducted under the supervision of a US Army Corps of Engineers hydrographer. The hydrographer is responsible for the accuracy of the data and the information depicted on this map. The user is responsible for the results of any application of the data for other than its intended purpose.
 The information depicted on this map represents the results of a hydrographic survey which was conducted under the supervision of a US Army Corps of Engineers hydrographer. The hydrographer is responsible for the accuracy of the data and the information depicted on this map. The user is responsible for the results of any application of the data for other than its intended purpose.

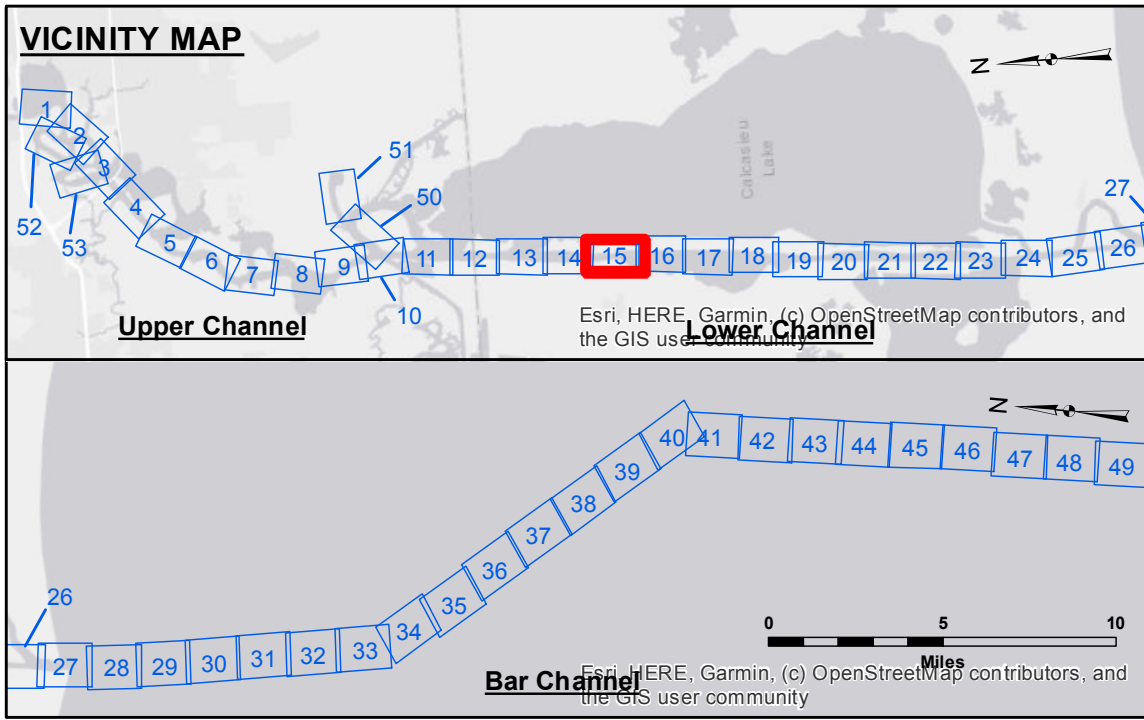
Submitted:	SP/PM
Reviewed:	BD
Checked:	AC

U.S. ARMY CORPS OF ENGINEERS
 NEW ORLEANS DISTRICT

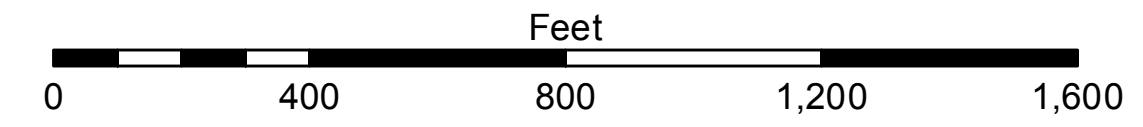
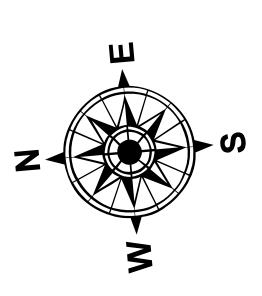
**CALCASIEU SHIP CHANNEL
 LOWER SHEET 15
 CR_15_LWR_20210930_CS
 30 September 2021**

**Sheet Reference Number
 15 of 53**

Revision Number:
 4.2-202 (04/20)



LEGEND	
--- Federal Navigation Channel	○ Cable Area
— Federal Navigation Center Line	□ Placement Area
— As-built Pipeline/Cable	□ Anchorage Area
..... Unconfirmed Pipeline/Cable	⊗ Obstruction Point
— Project Depth Contour	⊗ Wrecks-Submerged
3 Fluff Thickness (feet)*	★ Beacon, General
● Shoalest Sounding**	◆ Red Navigation Buoy
★ Beacon, General	◆ Green Navigation Buoy
◆ Red Navigation Buoy	
◆ Green Navigation Buoy	



NOTES:
 Horizontal Coordinate System:
 North American Datum of 1983 (NAD83), projected to the State Plane Coordinate System (SPCS), Louisiana South Zone. Distance units in U.S. Survey Feet.
 Vertical Datum:
 Soundings are shown in feet and indicate depths below Mean Lower Low Water Datum (MLLW).
 Datum Relationships for gage 73600 as of December 2013:
 0.0' NAVD83 (OPUS 2010) = 1.0' MLLW = 2.0' MLG or 0.0' MLLW = 1.0' MLG
 Distances on the Calcasieu River are shown at 1 mile intervals.
 The location of navigation aids are based on and provided by the U.S. Coast Guard and USACE survey crews.
 2015 Aerial Photography data source: NAIP
 Reference is N.O.A. Navigation Chart No. 11339.
 * Difference between high and low frequency elevations where greater than 1.0'.
 ** Shoalest Sounding per Quarter per Reach.
 *** High frequency (200 kHz) survey data represents the first signal return at a sounding location and will include suspended solids, known as "fluff", if present. Low frequency (20 kHz) survey data normally penetrates through this "fluff" layer to depict elevations of consolidated bottom material. Low frequency accuracies may vary depending on channel conditions and fathometer settings.

Gage Reading: HACKBERRY: 2.45 MLLW
 Sea Conditions: CALM
 Vessel Name: OB-167
 Survey Type: CONDITION
 Sounding Frequency***: LOW