

Distribution Liability: The data represents the results of data collection/processing for a specific US Army Corps of Engineers project. It is only valid for its intended use, content, time and accuracy specifications. The user is responsible for the results. Approximation of the data for other than its intended purpose.

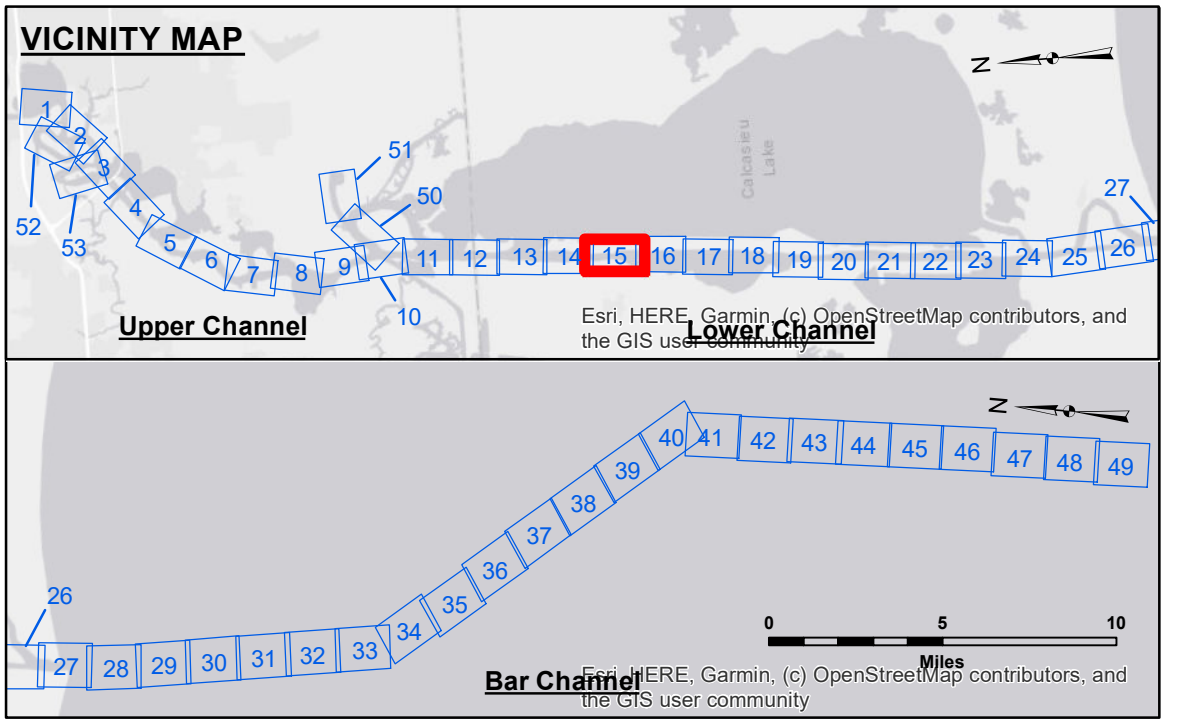
Data Constraints: Hydrographic survey data is subject to change rapidly due to several factors including but not limited to changing hydrological conditions which develop after the date of the survey. The user is responsible for the results of the data. The Army Corps of Engineers accepts no responsibility for changes in the hydrological conditions which develop after the date of the survey. Product maintainers should not rely solely upon it.

Access Constraints: The United States Government furnishes these data and the recipient accepts and uses them with the express understanding that the data are not to be used for any purpose other than that for which they were provided, and that the user is responsible for the results. The user is responsible for the results of the data. The Army Corps of Engineers accepts no responsibility for changes in the hydrological conditions which develop after the date of the survey. Product maintainers should not rely solely upon it.

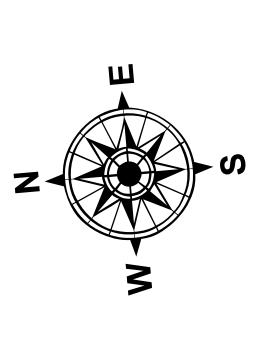
Submitted:	Surveyed By: SP-JS
Recommended:	Plotted By: JH
Approved:	Checked By: JH

U.S. ARMY CORPS OF ENGINEERS
NEW ORLEANS DISTRICT

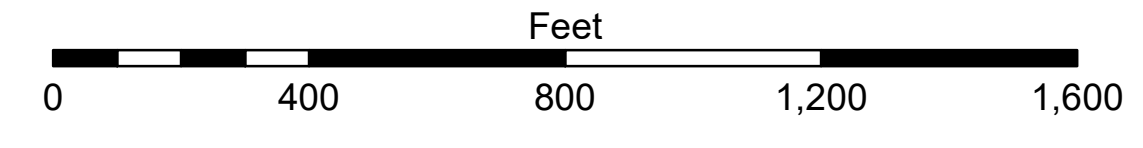
**CALCASIEU SHIP CHANNEL
LOWER SHEET 15
CR_15_LWR_20240905_PR
05 September 2024**



LEGEND		
--- Federal Navigation Channel	○ Cable Area	3 Fluff Thickness (feet)*
— Federal Navigation Center Line	□ Placement Area	● Shoalest Sounding**
— As-built Pipeline/Cable	⊗ Anchorage Area	★ Beacon, General
..... Unconfirmed Pipeline/Cable	⊗ Obstruction Point	◆ Red Navigation Buoy
— Project Depth Contour	⊗ Wrecks-Submerged	◆ Green Navigation Buoy



Gage Reading: HACKBERRY VRN: 2.10 MLLW AVG
Sea Conditions: CALM/RAIN
Vessel Name: MV TECHE
Survey Type: CONDITION
Sounding Frequency***: LOW



NOTES:
Horizontal Coordinate System: North American Datum of 1983 (NAD83), projected to the State Plane Coordinate System (SPCS), Louisiana South Zone. Distance units in U.S. Survey Feet.
Vertical Datum: Soundings are shown in feet and indicate depths below Mean Lower Low Water Datum (MLLW). Datum Relationships for gage 73600 as of December 2013: 0.0' NAVD88 (OPUS 2010) = 1.0' MLLW = 2.0' MLG or 0.0' MLLW = 1.0' MLG
Distances on the Calcasieu River are shown at 1 mile intervals.
The location of navigation aids are base on and provided by the U.S. Coast Guard and USACE survey crews.
2022 Aerial Photography data source: PAR LLC
Reference is N.O.A. Navigation Chart No. 11339.
* Difference between high and low frequency elevations where greater than 1.0'.
** Shoalest Sounding per Quarter Reach.
*** High frequency (200 kHz) survey data represents the first signal return at a sounding location and will include suspended solids, known as "fluff", if present. Low frequency (20 kHz) survey data normally penetrates through this "fluff" layer to depict elevations of consolidated bottom material. Low frequency accuracies may vary depending on channel conditions and fathometer settings.

**Sheet Reference Number
15 of 53**