

US Army Corps of Engineers District: CEMVN

Accession: _____
Revised: _____
Checked: _____

Accession: _____
Revised: _____
Checked: _____

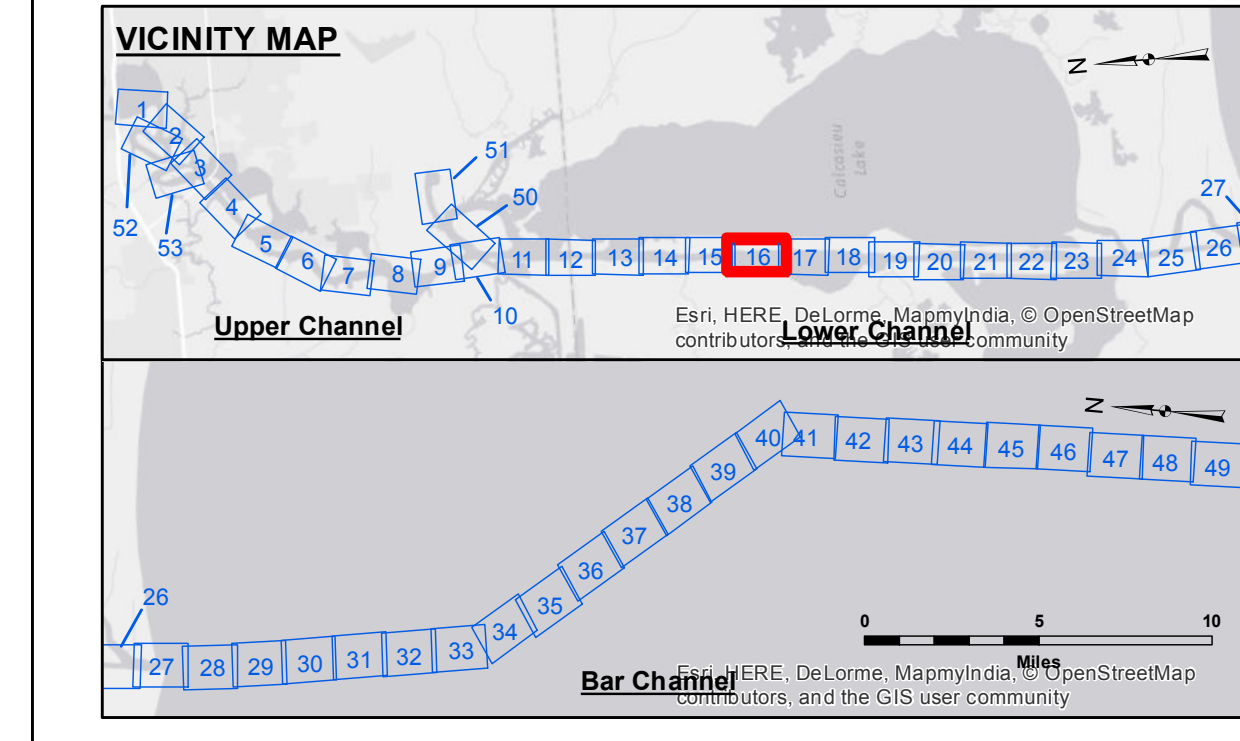
**U.S. ARMY CORPS OF ENGINEERS
 NEW ORLEANS DISTRICT**

Submitted: _____
Reviewed: _____
Approved: _____

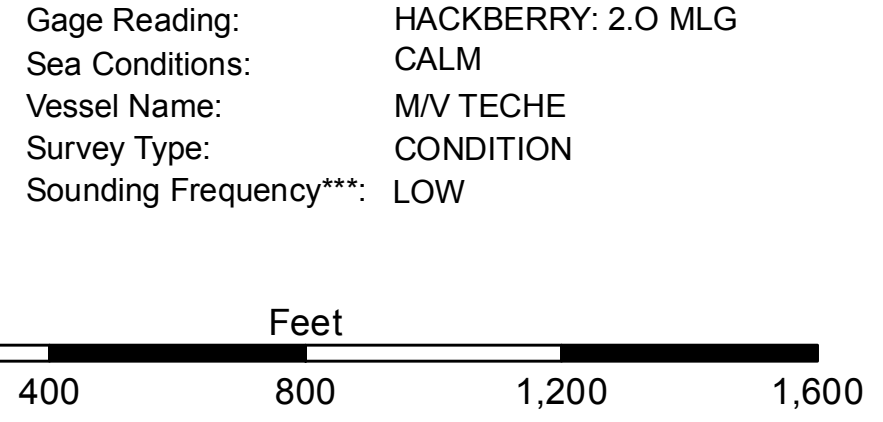
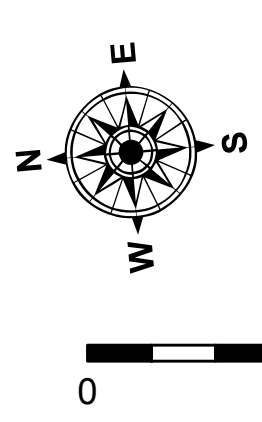
**CALCASIEU SHIP CHANNEL
 LOWER SHEET 16
 CR_16_LWR_20151027
 27 October 2015**

**Sheet Reference Number
 16 of 53**

Revision Number: 3.8-0-20150202



LEGEND			
--- Federal Navigation Channel	○ Cable Area	□ Borrow Area	■ -15' and above
— Federal Navigation Center Line	□ Placement Area	● Shoalest Sounding**	■ -15' to -20'
— As-built Pipeline/Cable	□ Anchorage Area	★ Beacon, General	■ -20' to -25'
..... Unconfirmed Pipeline/Cable	⊗ Obstruction Point	◆ Red Navigation Buoy	■ -25' to -32'
— Project Depth Contour	⊗ Wrecks-Submerged	◆ Green Navigation Buoy	■ -32' to -38'
			■ -38' to -40'
			■ -40' to -42'
			■ -42' and below



NOTES:

Horizontal Coordinate System: North American Datum of 1983 (NAD83), projected to the State Plane Coordinate System (SPCS), Louisiana South Zone. Distance units in U.S. Survey Feet.

Vertical Datum: Soundings are shown in feet and indicate depths below Mean Low Gull Datum (MLG). Datum Relationships for gage 73600 as of December 2013: 0.0 NAVD83 (OPUS 2010) = 1.0' MLLW = 2.0' MLG or 0.0' MLLW = 1.0' MLG

Distances on the Calcasieu River are shown at 1 mile intervals.

The location of navigation aids are based on and provided by the U.S. Coast Guard and USACE survey crews.

2010 Aerial Photography data source: NAIP

Reference is N.O.A. Navigation Chart No. 11339.

** Shoalest Sounding per Quarter per Reach.

*** High frequency (200 kHz) survey data represents the first signal return at a sounding location and will include suspended solids, known as "fluff", if present. Low frequency (20 kHz) survey data normally penetrates through this "fluff" layer to depict elevations of consolidated bottom material. Low frequency accuracies may vary depending on channel conditions and fathometer settings.