

Distribution Liability: The data represents the results of data collection/processing for a specific US Army Corps of Engineers project. It is only valid for its intended use, context, time and accuracy specifications. The user is responsible for the results and any application of the data for other than its intended purpose.

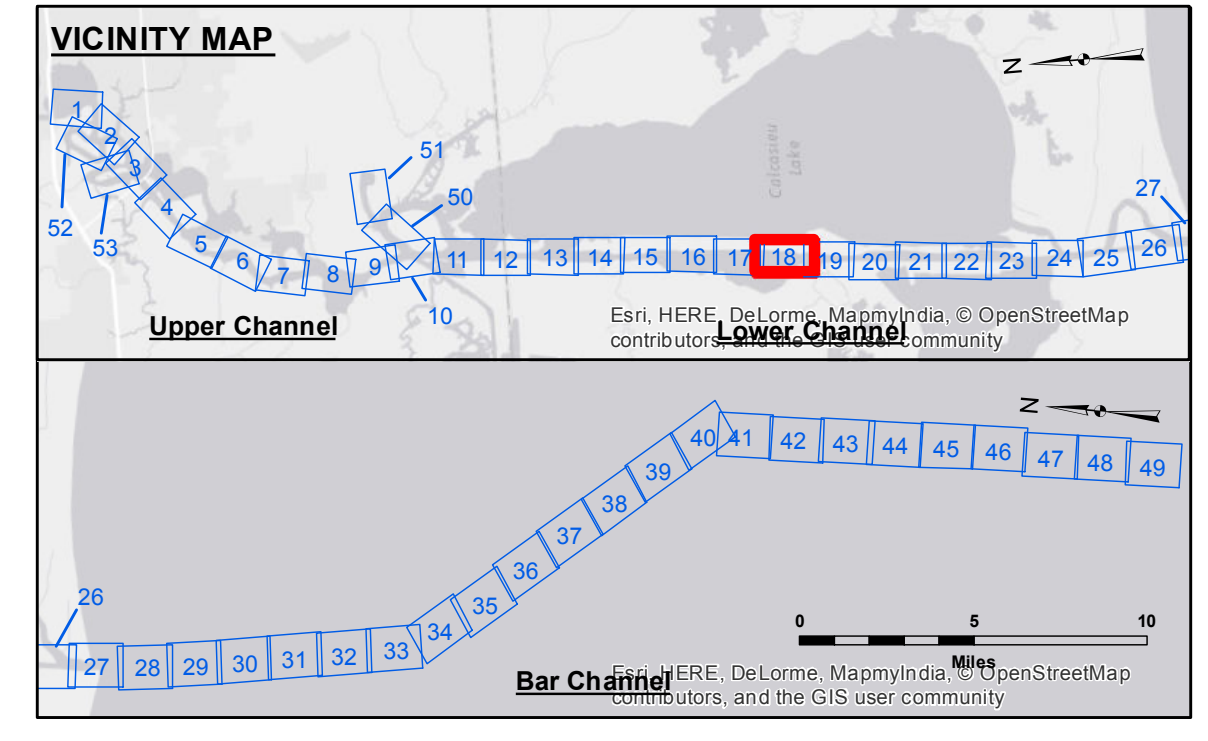
Data Constraints: Hydrographic survey data is subject to change rapidly due to several factors including but not limited to: changing hydrographic conditions, changes in bathymetry, and changes in the hydrographic conditions which develop after the date of the survey. The information depicted on this map represents the results of a survey conducted on the date shown and is not intended to represent the general condition existing at that time.

Access Constraints: The United States Government furnishes these data and the recipient accepts and uses them with the express understanding that the recipient is not to be held responsible for the reliability, usability or suitability for any particular purpose of the information. The user is responsible for the results and any application of the data for other than its intended purpose. The user is responsible for the results and any application of the data for other than its intended purpose.

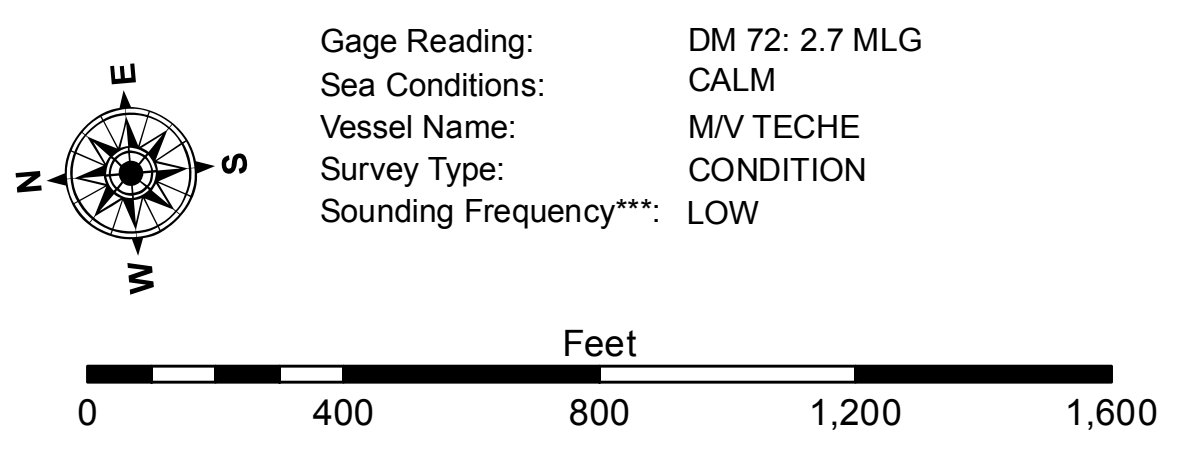
Disclaimer: The information depicted on this map represents the results of a survey conducted on the date shown and is not intended to represent the general condition existing at that time.

| | |
|--|------------------------|
| U.S. ARMY CORPS OF ENGINEERS NEW ORLEANS DISTRICT | |
| Submitted: | Surveyed By: SPS/JH |
| Recommended: | Plotted By: BTD |
| Approved: | Checked By: TAF |

**CALCASIEU SHIP CHANNEL
LOWER SHEET 18
CR_18_LWR_20150714
14 July 2015**



| LEGEND | |
|----------------------------------|-------------------------|
| --- Federal Navigation Channel | ● Cable Area |
| — Federal Navigation Center Line | □ Placement Area |
| — As-built Pipeline/Cable | □ Borrow Area |
| Unconfirmed Pipeline/Cable | ● Shoalest Sounding** |
| — Project Depth Contour | ★ Beacon, General |
| | ◆ Red Navigation Buoy |
| | ◆ Green Navigation Buoy |
| | ⊗ Obstruction Point |
| | ✈ Wrecks-Submerged |



NOTES:
Horizontal Coordinate System: North American Datum of 1983 (NAD83), projected to the State Plane Coordinate System (SPCS), Louisiana South Zone. Distance units in U.S. Survey Feet.
Vertical Datum: Soundings are shown in feet and indicate depths below Mean Low Gulf Datum (MLG). Datum Relationships for gage 73615 as of December 2013: 0.0' NAVD88 (2009.55) = 1.1' MLW = 2.1' MLG or 0.0' MLW = 1.0' MLG
Distances on the Calcasieu River are shown at 1 mile intervals.
The location of navigation aids are base on and provided by the U.S. Coast Guard and USACE survey crews.
2010 Aerial Photography data source: NAIP
Reference is N.O.A.A. Navigation Chart No. 11339.
** Shoalest Sounding per Quarter per Reach.
*** High frequency (200 kHz) survey data represents the first signal return at a sounding location and will include suspended solids, known as "fluff", if present. Low frequency (20 kHz) survey data normally penetrates through this "fluff" layer to depict elevations of consolidated bottom material. Low frequency accuracies may vary depending on channel conditions and fathometer settings.

**Sheet Reference Number
18 of 53**