

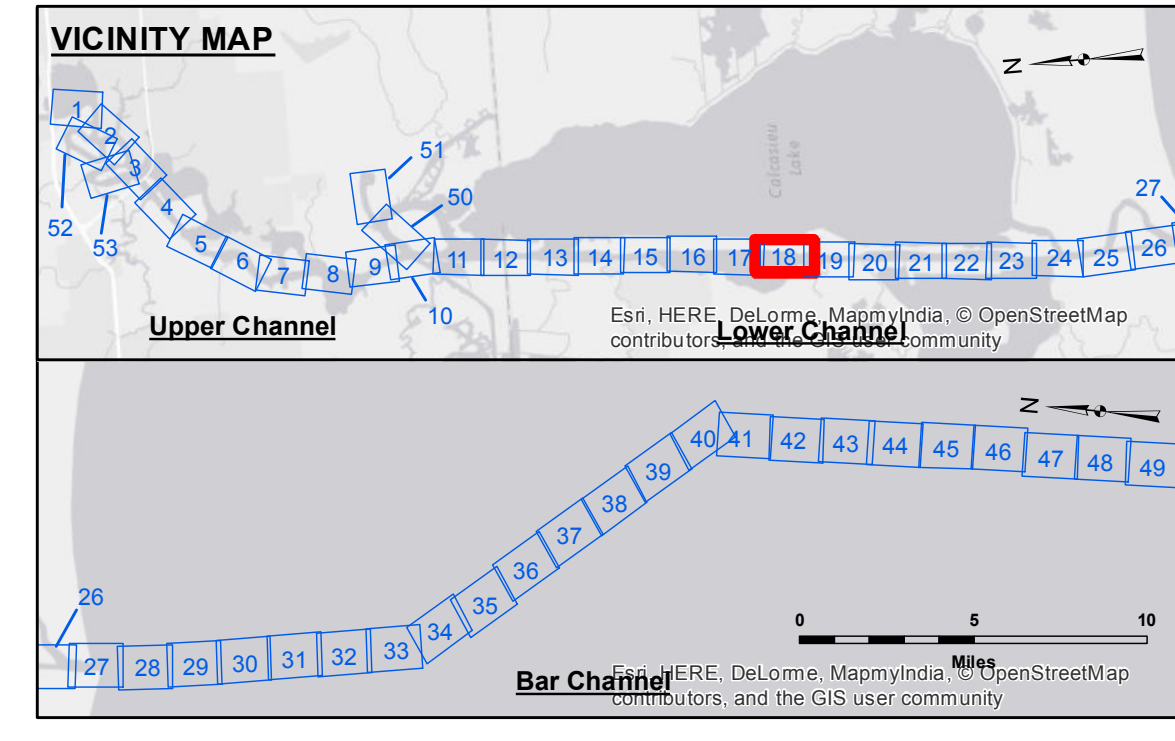
**Distribution Liability:** The data represents the results of data collection/processing for a specific US Army Corps of Engineers project. It is only valid for its intended use, control, time and accuracy specifications. The user is responsible for the results and any application of the data for other than its intended purpose. The application of the data for other than its intended purpose. The user is responsible for the results and any application of the data for other than its intended purpose. The user is responsible for the results and any application of the data for other than its intended purpose.

**Access:** The United States Government furnishes these data and the recipient accepts and uses them with the express understanding that the data are not to be used for any purpose other than that for which they were provided, and that the user is responsible for the results and any application of the data for other than its intended purpose. The user is responsible for the results and any application of the data for other than its intended purpose. The user is responsible for the results and any application of the data for other than its intended purpose.

Submitted:	Surveyed By: PM, JH
Recommended:	Plotted By: BD
Checked:	Checked By: AC
Approved:	Chief, Waterways Maintenance Section

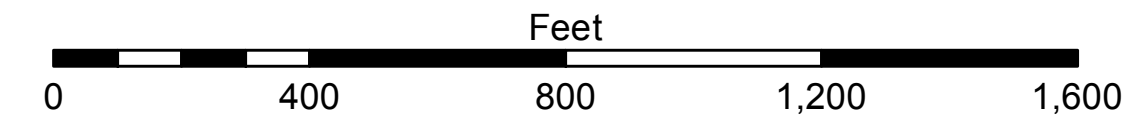
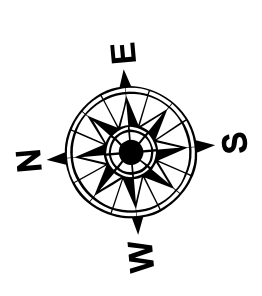
**CALCASIEU SHIP CHANNEL**  
**LOWER SHEET 18**  
**CR\_18\_LWR\_20170214**  
**14 February 2017**

**Sheet Reference Number**  
**18 of 53**



**LEGEND**

--- Federal Navigation Channel	○ Cable Area	3 Fluff Thickness (feet)*	-15' and above
— Federal Navigation Center Line	□ Placement Area	● Shoalest Sounding**	-15' to -20'
— As-built Pipeline/Cable	⊗ Anchorage Area	★ Beacon, General	-20' to -25'
..... Unconfirmed Pipeline/Cable	⊗ Obstruction Point	◆ Red Navigation Buoy	-25' to -32'
— Project Depth Contour	⊗ Wrecks-Submerged	◆ Green Navigation Buoy	-32' to -38'
			-38' to -40'
			-40' to -42'
			-42' and below



Gage Reading: DM 72: 2.45 MLG  
 Sea Conditions: CALM  
 Vessel Name: OB-167  
 Survey Type: CONDITION  
 Sounding Frequency\*\*\*: LOW

**NOTES:**

Horizontal Coordinate System: North American Datum of 1983 (NAD83), projected to the State Plane Coordinate System (SPCS), Louisiana South Zone. Distance units in U.S. Survey Feet.

Vertical Datum: Soundings are shown in feet and indicate depths below Mean Low Gulf Datum (MLG). Datum Relationships for gage 73615 as of December 2013: 0.0' NAVD88 (2009.55) = 1.1' MLLW = 2.1' MLG or 0.0' MLLW = 1.0' MLG

Distances on the Calcasieu River are shown at 1 mile intervals.

The location of navigation aids are base on and provided by the U.S. Coast Guard and USACE survey crews.

2015 Aerial Photography data source: NAIP

Reference is N.O.A.A. Navigation Chart No. 11339.

\* Difference between high and low frequency elevations where greater than 1.0'.  
 \*\* Shoalest Sounding per Quarter per Reach.  
 \*\*\* High frequency (200 kHz) survey data represents the first signal return at a sounding location and will include suspended solids, known as "fluff", if present. Low frequency (20 kHz) survey data normally penetrates through this "fluff" layer to depict elevations of consolidated bottom material. Low frequency accuracies may vary depending on channel conditions and fathometer settings.