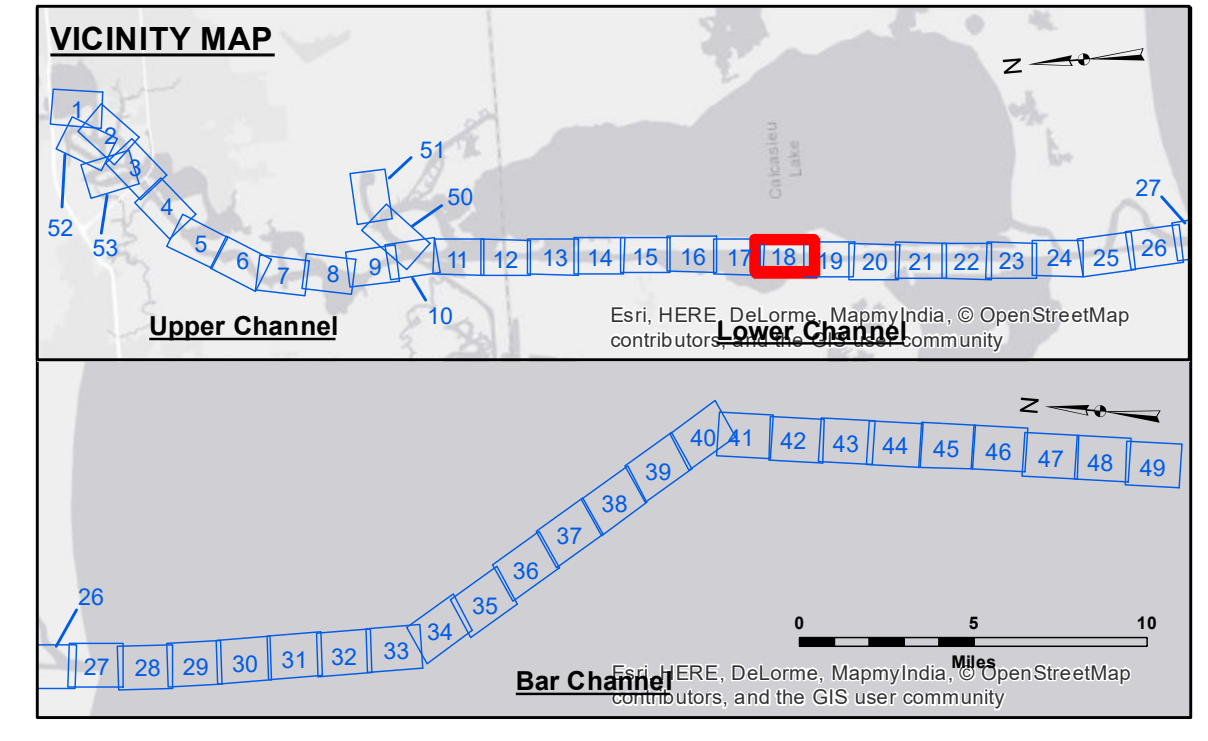


**Access/Availability:** The United States Government furnishes these data and the recipient accepts and uses them with the express understanding that they are not to be used for any purpose other than that for which they were prepared, or in any way that may be construed as an endorsement, or in any way that may be construed as a warranty, or in any way that may be construed as a representation of the accuracy, completeness, or reliability of the data for other than the intended purpose. The user is responsible for the results of any use of the data for other than the intended purpose.

**Disclaimer:** The information depicted on this map represents the results of a hydrographic survey conducted in accordance with the standards of the United States Army Corps of Engineers. The Corps of Engineers does not warrant the accuracy of the information depicted on this map, and the Corps of Engineers does not accept any responsibility for changes in the hydrographic conditions which develop after the date of the survey. The Corps of Engineers does not accept any responsibility for changes in the hydrographic conditions which develop after the date of the survey. The Corps of Engineers does not accept any responsibility for changes in the hydrographic conditions which develop after the date of the survey.

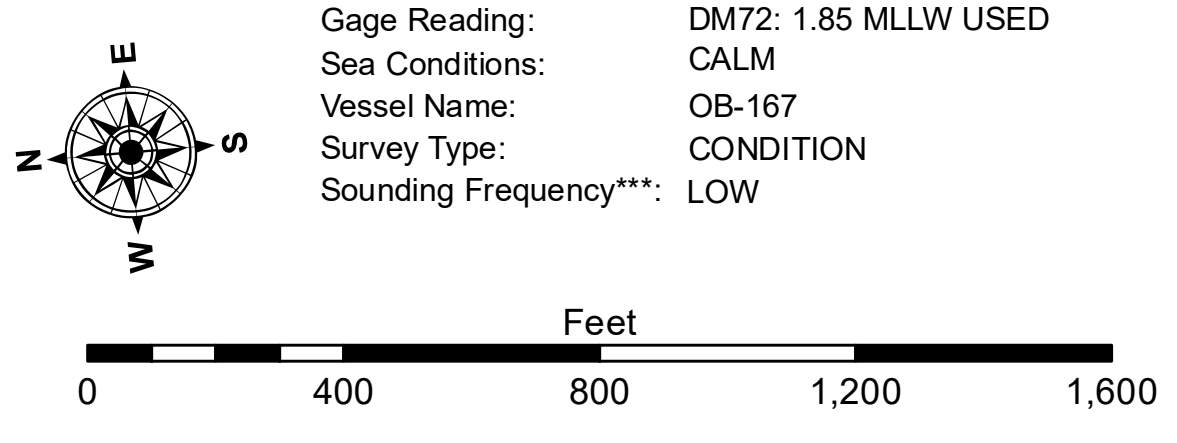
Submitted:	Surveyed By: DS, JH
Recommended:	Plotted By: PLOTTED_BY
Approved:	Checked By: CHECKED_BY

U.S. ARMY CORPS OF ENGINEERS  
NEW ORLEANS DISTRICT  
Chief, Waterways Maintenance Section



**LEGEND**

--- Federal Navigation Channel	○ Cable Area	3 Fluff Thickness (feet)*	-16' and above
— Federal Navigation Center Line	□ Placement Area	● Shoalest Sounding**	-16' to -21'
— As-built Pipeline/Cable	⊗ Anchorage Area	★ Beacon, General	-21' to -26'
..... Unconfirmed Pipeline/Cable	⊗ Obstruction Point	◆ Red Navigation Buoy	-26' to -33'
— Project Depth Contour	⊗ Wrecks-Submerged	◆ Green Navigation Buoy	-33' to -39'
			-39' to -41'
			-41' to -43'
			-43' and below



**CALCASIEU SHIP CHANNEL  
LOWER SHEET 18  
CR\_18\_LWR\_20180918\_CS  
18 September 2018**

**Sheet Reference Number  
18 of 53**

Revision Number:  
3.13-20160811