

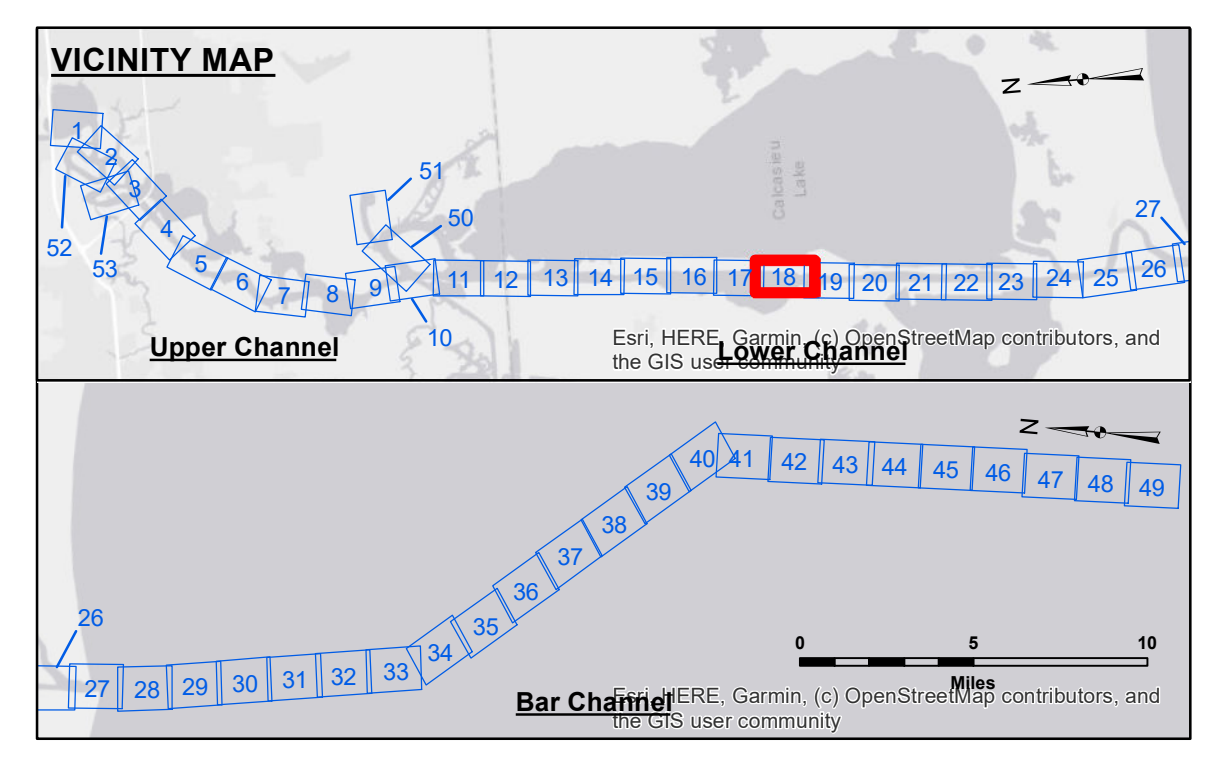
DISTRIBUTION LIABILITY: The data represents the results of data collection/processing for a specific US Army Corps of Engineers project. It is only valid for its intended use, content, time and accuracy specifications. The user is responsible for the results of any use of the data for other than its intended purpose.

Data Continuity: Hydrographic survey data is subject to change rapidly due to several factors including, but not limited to, changing hydrological conditions which develop after the date of the survey. The US Army Corps of Engineers accepts no responsibility for changes in the hydrological conditions which develop after the date of the survey. Prudent mariners should not rely upon it.

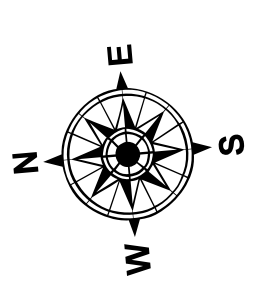
DISCLAIMER: The United States Government furnishes these data and the recipient accepts and uses them with the express understanding that the data are not to be used for any purpose other than that for which they were originally collected, expressed, or implied concerning the accuracy, completeness, reliability, usability or suitability for any particular purpose of the recipient. The recipient may not transfer, reproduce, or disseminate these data to any other person or organization without the express written consent of the US Army Corps of Engineers. The recipient may not transfer these data to others without obtaining the permission of the US Army Corps of Engineers. The recipient may not transfer these data to others without obtaining the permission of the US Army Corps of Engineers.

U.S. ARMY CORPS OF ENGINEERS NEW ORLEANS DISTRICT	
Submitted:	SPSR
Recommended:	JH
Checked By:	JH
Approved:	JH

**CALCASIEU SHIP CHANNEL
LOWER SHEET 18
CR_18_LWR_20230208_CS
08 February 2023**



LEGEND	
--- Federal Navigation Channel	○ Cable Area
— Federal Navigation Center Line	□ Placement Area
— As-built Pipeline/Cable	□ Anchorage Area
..... Unconfirmed Pipeline/Cable	⊗ Obstruction Point
— Project Depth Contour	✈ Wrecks-Submerged
3 Fluff Thickness (feet)*	★ Beacon, General
● Shoalest Sounding**	◆ Red Navigation Buoy
★ Beacon, General	◆ Green Navigation Buoy
◆ Red Navigation Buoy	
◆ Green Navigation Buoy	



Gage Reading: NTRIP VRS RTK: 1.60 MLLW AVG
Sea Conditions: CALM
Vessel Name: MV TECHE
Survey Type: CONDITION
Sounding Frequency***: LOW

Vertical Datum:
Soundings are shown in feet and indicate depths below Mean Lower Low Water Datum (MLLW). Datum Relationships for gage 73615 as of December 2013:
0.0' NAVD83 (2009.55) = 1.1' MLLW = 2.1' MLG or 0.0' MLLW = 1.0' MLG

Distances on the Calcasieu River are shown at 1 mile intervals.

The location of navigation aids are based on and provided by the U.S. Coast Guard and USACE survey crews.

2022 Aerial Photography data source: PAR LLC
Reference is N.O.A.A. Navigation Chart No. 11339.
* Difference between high and low frequency elevations where greater than 1.0'.
** Shoalest Sounding per Quarter per Reach.
*** High frequency (200 kHz) survey data represents the first signal return at a sounding location and will include suspended solids, known as "fluff", if present. Low frequency (20 kHz) survey data normally penetrates through this "fluff" layer to depict elevations of consolidated bottom material. Low frequency accuracies may vary depending on channel conditions and fathometer settings.

NOTES:
Horizontal Coordinate System:
North American Datum of 1983 (NAD83), projected to the State Plane Coordinate System (SPCS), Louisiana South Zone. Distance units in U.S. Survey Feet.

Vertical Datum:
Soundings are shown in feet and indicate depths below Mean Lower Low Water Datum (MLLW). Datum Relationships for gage 73615 as of December 2013:
0.0' NAVD83 (2009.55) = 1.1' MLLW = 2.1' MLG or 0.0' MLLW = 1.0' MLG

Distances on the Calcasieu River are shown at 1 mile intervals.

The location of navigation aids are based on and provided by the U.S. Coast Guard and USACE survey crews.

2022 Aerial Photography data source: PAR LLC
Reference is N.O.A.A. Navigation Chart No. 11339.
* Difference between high and low frequency elevations where greater than 1.0'.
** Shoalest Sounding per Quarter per Reach.
*** High frequency (200 kHz) survey data represents the first signal return at a sounding location and will include suspended solids, known as "fluff", if present. Low frequency (20 kHz) survey data normally penetrates through this "fluff" layer to depict elevations of consolidated bottom material. Low frequency accuracies may vary depending on channel conditions and fathometer settings.

**Sheet Reference Number
18 of 53**