

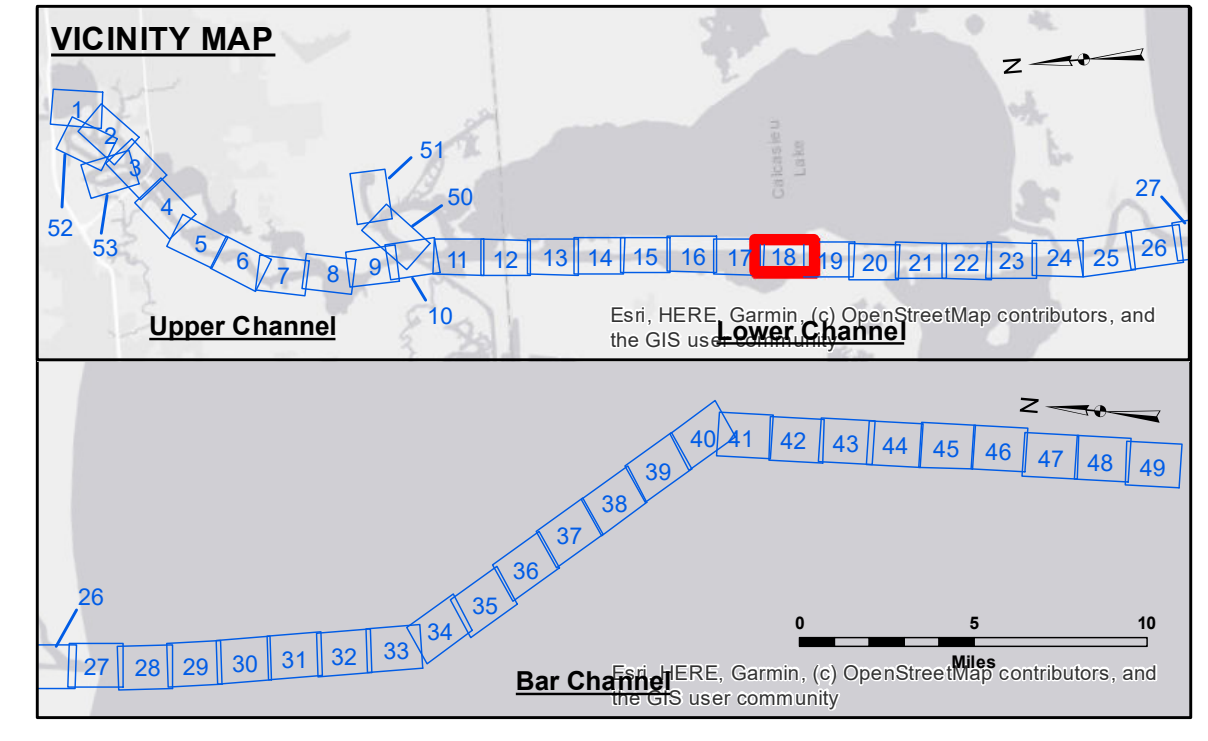
DISCLAIMER
 The information depicted on this map represents the results of a survey conducted by the United States Army Corps of Engineers. The user is responsible for the accuracy, completeness, and reliability of the data for its intended use. The user is responsible for the accuracy, completeness, and reliability of the data for its intended use. The user is responsible for the accuracy, completeness, and reliability of the data for its intended use. The user is responsible for the accuracy, completeness, and reliability of the data for its intended use.

Submitted:	Surveyed By: SP-JS
Recommended:	Plotted By: BD
Checked By: AD/H	Checked By: AD/H

U.S. ARMY CORPS OF ENGINEERS
 NEW ORLEANS DISTRICT

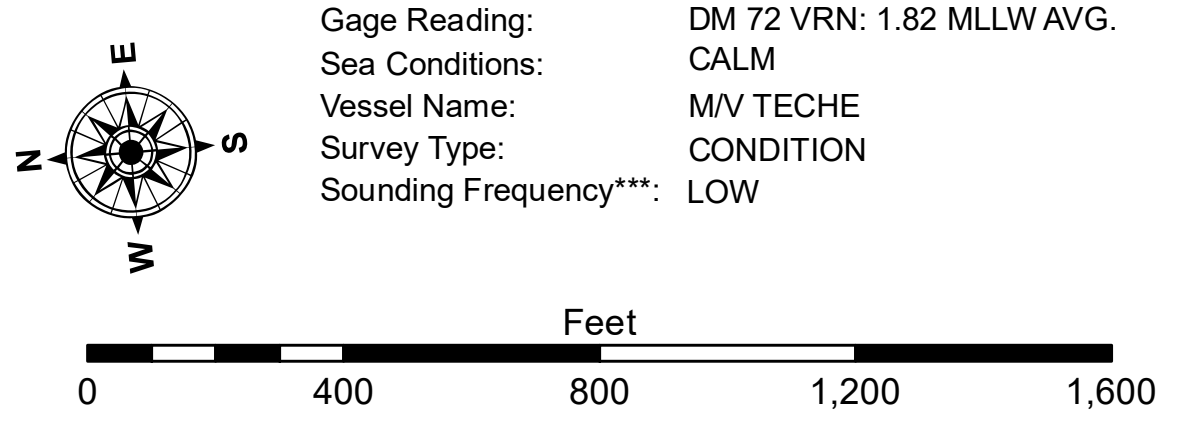
**CALCASIEU SHIP CHANNEL
 LOWER SHEET 18
 CR_18_LWR_20231010_CS
 10 October 2023**

**Sheet Reference Number
 18 of 53**



LEGEND

--- Federal Navigation Channel	○ Cable Area	3 Fluff Thickness (feet)*	-16' and above
— Federal Navigation Center Line	□ Placement Area	● Shoalest Sounding**	-16' to -21'
— As-built Pipeline/Cable	⊗ Anchorage Area	★ Beacon, General	-21' to -26'
..... Unconfirmed Pipeline/Cable	⊗ Obstruction Point	◆ Red Navigation Buoy	-26' to -33'
— Project Depth Contour	⊗ Wrecks-Submerged	◆ Green Navigation Buoy	-33' to -39'
			-39' to -41'
			-41' to -43'
			-43' and below



NOTES:
 Horizontal Coordinate System: North American Datum of 1983 (NAD83), projected to the State Plane Coordinate System (SPCS), Louisiana South Zone. Distance units in U.S. Survey Feet.
 Vertical Datum: Soundings are shown in feet and indicate depths below Mean Lower Low Water Datum (MLLW). Datum Relationships for gauge 73615 as of December 2013: 0.0' NAVD83 (2009.55) = 1.1' MLLW = 2.1' MLG or 0.0' MLLW = 1.0' MLG
 Distances on the Calcasieu River are shown at 1 mile intervals.
 The location of navigation aids are base on and provided by the U.S. Coast Guard and USACE survey crews.
 2022 Aerial Photography data source: PAR LLC
 Reference is N.O.A.A. Navigation Chart No. 11339.
 * Difference between high and low frequency elevations where greater than 1.0'.
 ** Shoalest Sounding per Quarter per Reach.
 *** High frequency (200 kHz) survey data represents the first signal return at a sounding location and will include suspended solids, known as "fluff", if present. Low frequency (20 kHz) survey data normally penetrates through this "fluff" layer to depict elevations of consolidated bottom material. Low frequency accuracies may vary depending on channel conditions and fathometer settings.