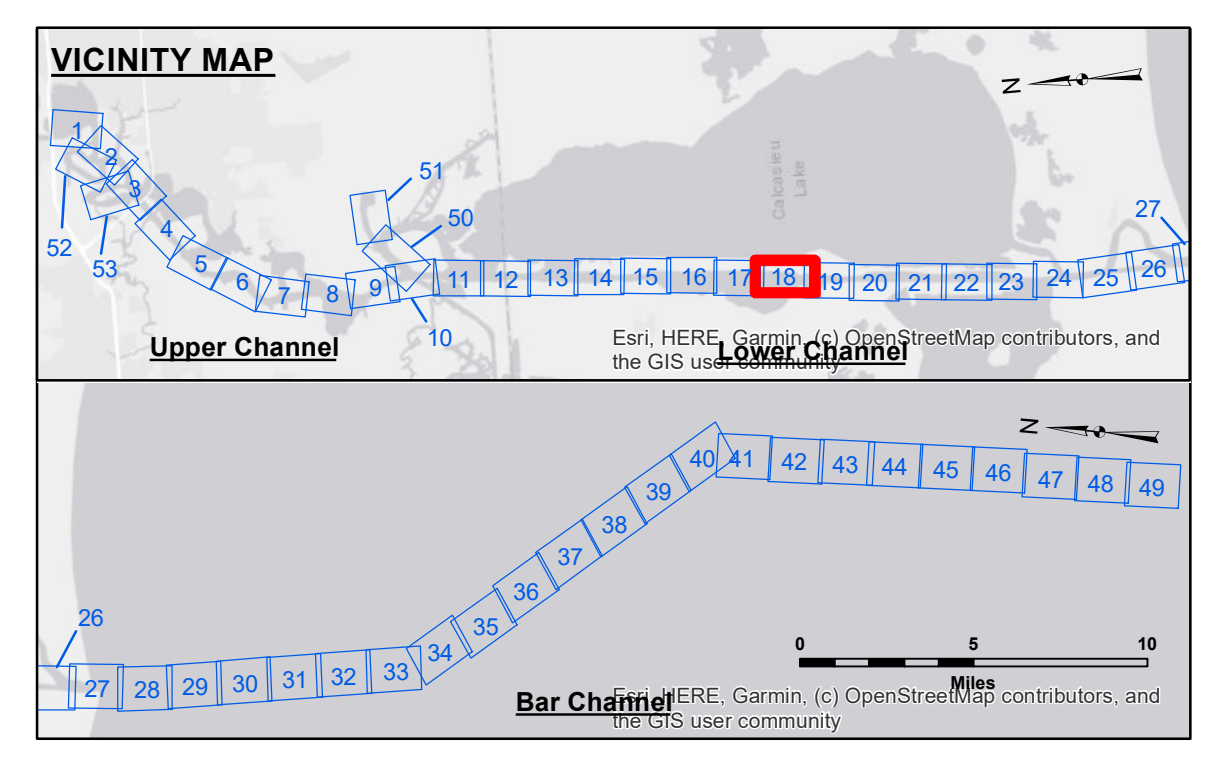
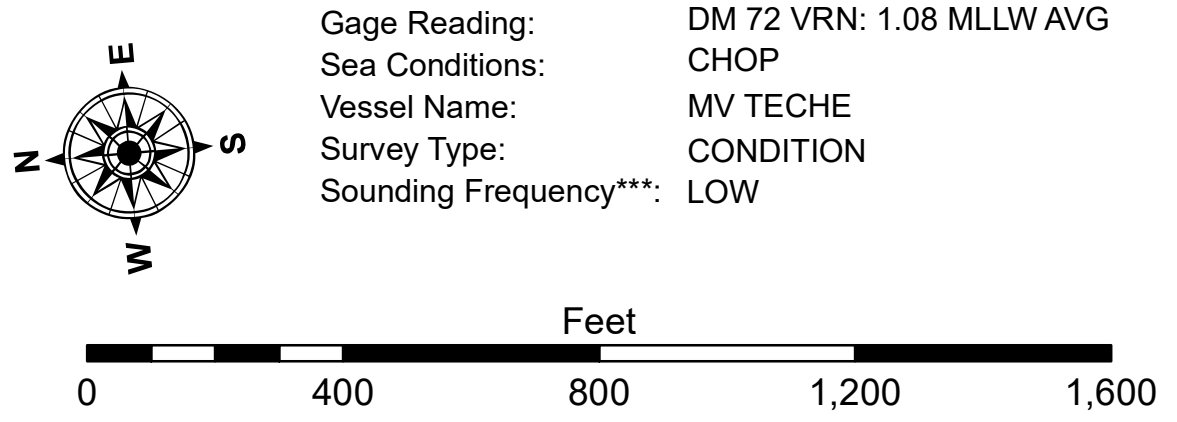


2,647,000
2,644,000

2,647,000
2,644,000



LEGEND			
--- Federal Navigation Channel	○ Cable Area	3 Fluff Thickness (feet)*	-16' and above
— Federal Navigation Center Line	□ Placement Area	● Shoalest Sounding**	-16' to -21'
— As-built Pipeline/Cable	⊗ Anchorage Area	☆ Beacon, General	-21' to -26'
..... Unconfirmed Pipeline/Cable	⊗ Obstruction Point	♦ Red Navigation Buoy	-26' to -33'
— Project Depth Contour	✈ Wrecks-Submerged	◇ Green Navigation Buoy	-33' to -39'
			-39' to -41'
			-41' to -43'
			-43' and below



NOTES:
Horizontal Coordinate System:
North American Datum of 1983 (NAD83), projected to the State Plane
Coordinate System (SPCS), Louisiana South Zone. Distance units in U.S. Survey Feet.

Vertical Datum:
Soundings are shown in feet and indicate depths below Mean Lower Low Water Datum (MLLW).
Datum Relationships for gage 73615 as of December 2013:
0.0' NAVD83 (2009.55) = 1.1' MLLW = 2.1' MLG or 0.0' MLLW = 1.0' MLG

Distances on the Calcasieu River are shown at 1 mile intervals.

The location of navigation aids are base on and provided by the U.S. Coast Guard and USACE survey crews.

2022 Aerial Photography data source: PAR LLC
Reference is N.O.A. Navigation Chart No. 11339.
* Difference between high and low frequency elevations where greater than 1.0'.
** Shoalest Sounding per Quarter per Reach.
*** High frequency (200 kHz) survey data represents the first signal return at a sounding location and will include suspended solids, known as "fluff", if present. Low frequency (20 kHz) survey data normally penetrates through this "fluff" layer to depict elevations of consolidated bottom material. Low frequency accuracies may vary depending on channel conditions and fathometer settings.

U.S. ARMY CORPS OF ENGINEERS NEW ORLEANS DISTRICT	
Submitted: _____	Surveyed By: SP-JS
Recommended: _____	Plotted By: JH
Approved: _____	Checked By: JH

**CALCASIEU SHIP CHANNEL
LOWER SHEET 18
CR_18_LWR_20240417_CS
17 April 2024**

**Sheet
Reference
Number
18 of 53**

Revision Number:
4.2-20200420

DISTRIBUTION LIABILITY: The data represents the results of data collection/processing for a specific US Army Corps of Engineers project. It is only valid for its intended use, content, time and accuracy specifications. The user is responsible for the results and any application of the data for other than its intended purpose.

Data Constants: Hydrographic survey data is subject to change rapidly due to several factors including, but not limited to, dredging operations, channel conditions, and changes in the bathymetry of the river. The US Army Corps of Engineers accepts no responsibility for changes in the hydrographic conditions which develop after the date of the original survey. Prudent mariners should not rely solely upon this information.

DISCLAIMER: The United States Government furnishes these data and the recipient accepts and uses them with the express understanding that the data are not to be used for any purpose other than that for which they were originally collected, expressed, or implied concerning the accuracy, completeness, reliability, usability or suitability, for any particular purpose of the recipient. The recipient agrees to hold the United States Government under no liability whatsoever to any person by reason of any use of these data, in whole or in part, for any purpose other than that for which they were originally collected, expressed, or implied. The recipient may not transfer these data to others without obtaining the permission of the United States Government. The recipient may not transfer these data to others without obtaining the permission of the United States Government. The recipient may not transfer these data to others without obtaining the permission of the United States Government. The recipient may not transfer these data to others without obtaining the permission of the United States Government.