

DISCLAIMER: The information depicted on this map represents the results of a bathymetric survey conducted in 2010. This information is not to be used for any purpose other than that intended by the Corps of Engineers. The Corps of Engineers accepts no responsibility for changes in the hydrographic conditions which develop after the date of the survey. The user is responsible for the accuracy, completeness, and reliability of the data for other than its intended purpose. The user is responsible for the results of any application of the data for other than its intended purpose. The user is responsible for the results of any application of the data for other than its intended purpose.

U.S. ARMY CORPS OF ENGINEERS
NEW ORLEANS DISTRICT

Submitted: _____

Reviewed By: JA, JH

Plotted By: BID

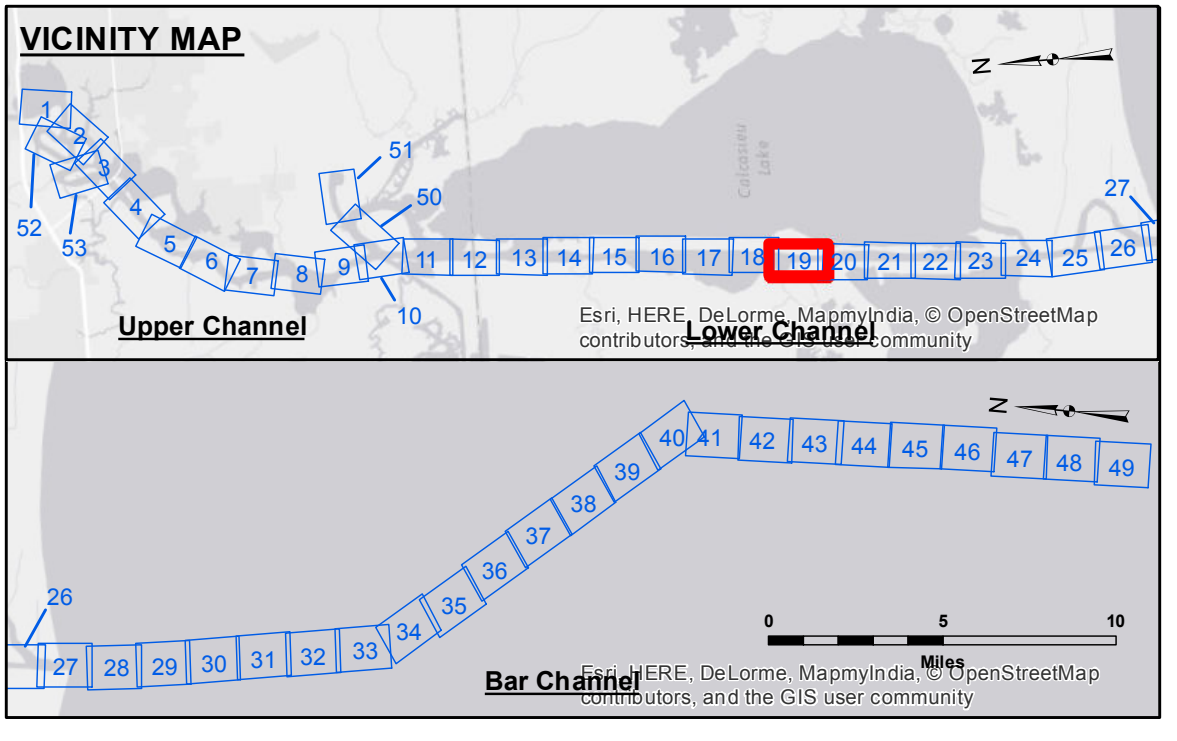
Checked By: TAF

Approved: _____

Chief, Waterways Maintenance Section

CALCASIEU SHIP CHANNEL
LOWER SHEET 19
CR_19_LWR_20160120
20 January 2016

Sheet Reference Number
19 of 53



LEGEND

- Federal Navigation Channel
- Federal Navigation Center Line
- As-built Pipeline/Cable
- ⋯ Unconfirmed Pipeline/Cable
- Project Depth Contour
- Cable Area
- Placement Area
- Anchorage Area
- ⊗ Obstruction Point
- ⚓ Wrecks-Submerged
- Borrow Area
- Shoalest Sounding**
- ☆ Beacon, General
- ◇ Red Navigation Buoy
- ◇ Green Navigation Buoy

-15' and above	-15' to -20'	-20' to -25'	-25' to -32'	-32' to -38'	-38' to -40'	-40' to -42'	-42' and below
----------------	--------------	--------------	--------------	--------------	--------------	--------------	----------------

Gage Reading: DM 72: 2.7 MLG

Sea Conditions: CALM

Vessel Name: M/V TECHE

Survey Type: CONDITION

Sounding Frequency***: LOW

Feet

0 400 800 1,200 1,600

NOTES:

Horizontal Coordinate System: North American Datum of 1983 (NAD83), projected to the State Plane Coordinate System (SPCS), Louisiana South Zone. Distance units in U.S. Survey Feet.

Vertical Datum: Soundings are shown in feet and indicate depths below Mean Low Gulf Datum (MLG). Datum Relationships for gage 73615 as of December 2013: 0.0' NAVD83 (2009.55) = 1.1' MLLW = 2.1' MLG or 0.0' MLLW = 1.0' MLG

Distances on the Calcasieu River are shown at 1 mile intervals.

The location of navigation aids are based on and provided by the U.S. Coast Guard and USACE survey crews.

2010 Aerial Photography data source: NAIP

Reference is N.O.A.A. Navigation Chart No. 11339.

** Shoalest Sounding per Quarter per Reach.

*** High frequency (200 kHz) survey data represents the first signal return at a sounding location and will include suspended solids, known as "fluff", if present. Low frequency (20 kHz) survey data normally penetrates through this "fluff" layer to depict elevations of consolidated bottom material. Low frequency accuracies may vary depending on channel conditions and fathometer settings.