

DISTRIBUTION LIABILITY: The data represents the results of data collection/processing for a specific US Army Corps of Engineers project. It is only valid for its intended use, content, time and accuracy specifications. The user is responsible for the results expressed. The Corps of Engineers does not warrant the accuracy of the data for other than its intended purpose.

Data Constraints: Hydrographic survey data is subject to change due to several factors including but not limited to changing hydrographic conditions, changes in the datum, and changes in the hydrographic conditions which develop after the date of the survey. The Corps of Engineers accepts no responsibility for changes in the data or the results of the data. The user is responsible for the results of the data. The Corps of Engineers does not warrant the accuracy of the data for other than its intended purpose.

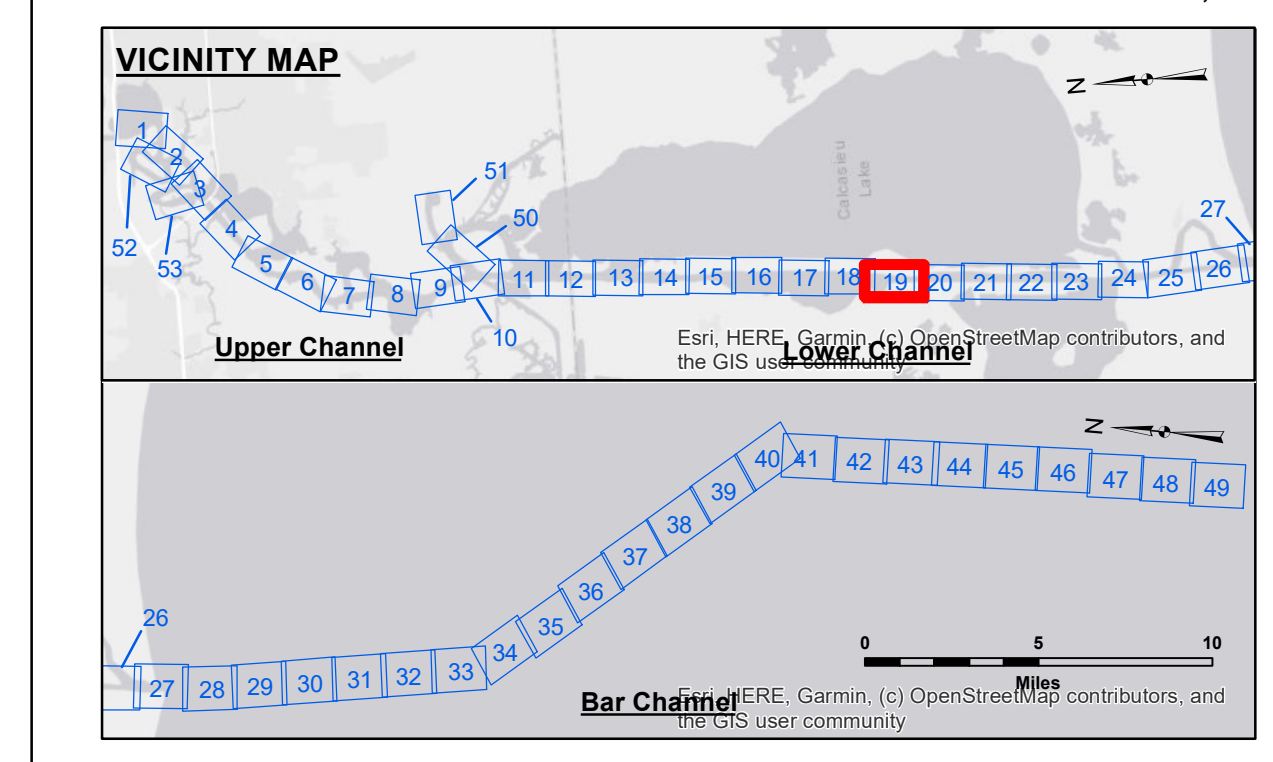
Access: The United States Government furnishes these data and the recipient accepts and uses them with the express understanding that the data are not to be used for any purpose other than that for which they were provided, and that the recipient is not to be held responsible for any use of the data for any other purpose. The recipient may not transfer these data to others without also transferring this Disclaimer. The information depicted on this map represents the results of a survey conducted on or after the date of the survey. The Corps of Engineers does not warrant the accuracy of the data for other than its intended purpose.

U.S. ARMY CORPS OF ENGINEERS NEW ORLEANS DISTRICT	
Submitted:	Surveyed By: SP,SR
Recommended:	Plotted By: JH
Approved:	Checked By: JH

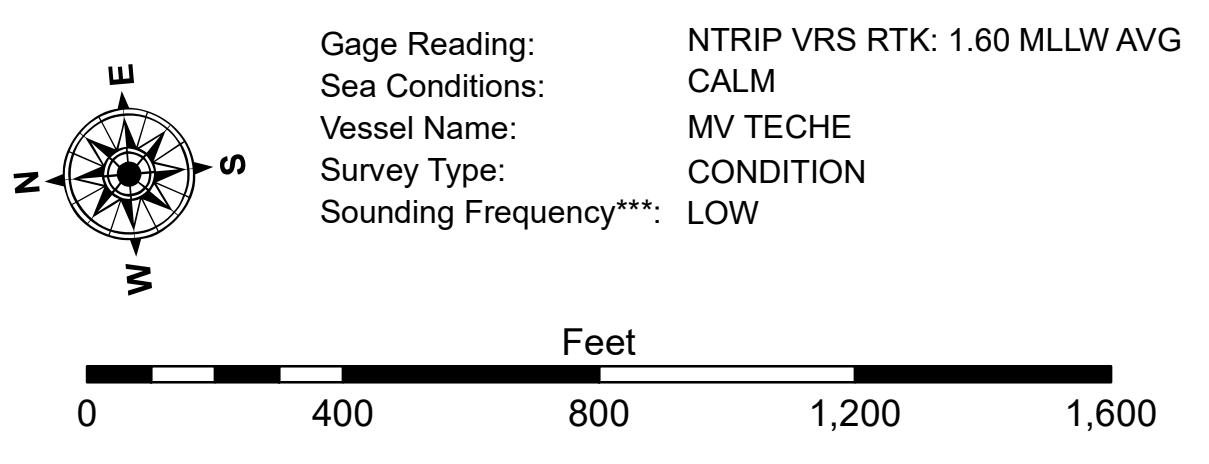
**CALCASIEU SHIP CHANNEL
LOWER SHEET 19
CR_19_LWR_20230208_CS
08 February 2023**

**Sheet Reference Number
19 of 53**

Revision Number:
4.2-20230428



LEGEND	
--- Federal Navigation Channel	● Cable Area
— Federal Navigation Center Line	□ Placement Area
— As-built Pipeline/Cable	□ Anchorage Area
..... Unconfirmed Pipeline/Cable	⊗ Obstruction Point
— Project Depth Contour	⚓ Wrecks-Submerged
3 Fluff Thickness (feet)*	★ Beacon, General
● Shoalest Sounding**	◆ Red Navigation Buoy
● Green Navigation Buoy	◆ Green Navigation Buoy
■ -16' and above	
■ -16' to -21'	
■ -21' to -26'	
■ -26' to -33'	
■ -33' to -39'	
■ -39' to -41'	
■ -41' to -43'	
■ -43' and below	



NOTES:

Horizontal Coordinate System:
 North American Datum of 1983 (NAD83), projected to the State Plane Coordinate System (SPCS), Louisiana South Zone. Distance units in U.S. Survey Feet.

Vertical Datum:
 Soundings are shown in feet and indicate depths below Mean Lower Low Water Datum (MLLW).
 Datum Relationships for gage 73615 as of December 2013:
 0.0' NAVD83 (2009.55) = 1.1' MLLW = 2.1' MLG or 0.0' MLLW = 1.0' MLG

Distances on the Calcasieu River are shown at 1 mile intervals.

The location of navigation aids are base on and provided by the U.S. Coast Guard and USACE survey crews.

2022 Aerial Photography data source: PAR LLC
 Reference is N.O.A.A. Navigation Chart No. 11339.

* Difference between high and low frequency elevations where greater than 1.0'.
 ** Shoalest Sounding per Quarter per Reach.
 *** High frequency (200 kHz) survey data represents the first signal return at a sounding location and will include suspended solids, known as "fluff", if present. Low frequency (20 kHz) survey data normally penetrates through this "fluff" layer to depict elevations of consolidated bottom material. Low frequency accuracies may vary depending on channel conditions and fathometer settings.