

DISCLAIMER
 The United States Government furnishes this data and the recipient accepts and uses them with the express understanding that the data are for informational purposes only and are not intended for use in any other application. The user is responsible for the accuracy, completeness, and reliability of the data for its intended use. The user is not responsible for any liability whatsoever to any person by reason of any use made of this data. These data are provided as a courtesy and are not intended to represent the general condition existing at that time. The information depicted on this map represents the results of a hydrographic survey conducted on or after the date of the survey. The user is responsible for the accuracy, completeness, and reliability of the data for its intended use. The user is not responsible for any liability whatsoever to any person by reason of any use made of this data. These data are provided as a courtesy and are not intended to represent the general condition existing at that time.

U.S. ARMY CORPS OF ENGINEERS NEW ORLEANS DISTRICT			
Submitted:	Surveyed By: SP-JS	Plotted By: JHI	Checked By: JHI
Recommended:	Chief, Survey Section		
Approved:	Chief, Waterways Maintenance Section		

**CALCASIEU SHIP CHANNEL
 LOWER SHEET 19
 CR_19_LWR_20240904_CS
 04 September 2024**

**Sheet Reference Number
 19 of 53**

NOTES:

Horizontal Coordinate System:
 North American Datum of 1983 (NAD83), projected to the State Plane Coordinate System (SPCS), Louisiana South Zone. Distance units in U.S. Survey Feet.

Vertical Datum:
 Soundings are shown in feet and indicate depths below Mean Lower Low Water Datum (MLLW). Datum Relationships for gage 73615 as of December 2013:
 0.0' NAVD83 (2009.55) = 1.1' MLLW = 2.1' MLG or 0.0' MLLW = 1.0' MLG

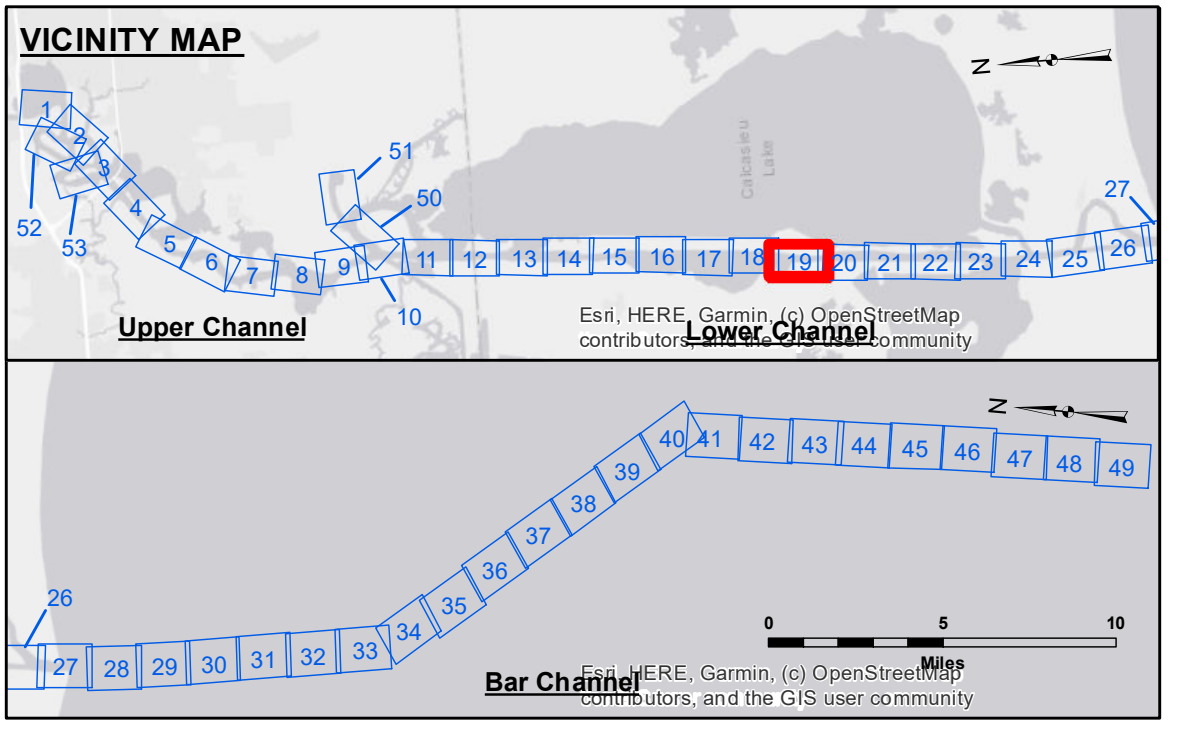
Distances on the Calcasieu River are shown at 1 mile intervals.

The location of navigation aids are based on and provided by the U.S. Coast Guard and USACE survey crews.

2022 Aerial Photography data source: PAR LLC
 Reference is N.O.A. Navigation Chart No. 11339.

* Difference between high and low frequency elevations where greater than 1.0'.
 ** Shoalest Sounding per Quarter per Reach.

*** High frequency (200 kHz) survey data represents the first signal return at a sounding location and will include suspended solids, known as "fluff", if present. Low frequency (20 kHz) survey data normally penetrates through this "fluff" layer to depict elevations of consolidated bottom material. Low frequency accuracies may vary depending on channel conditions and fathometer settings.



LEGEND			
--- Federal Navigation Channel	○ Cable Area	3 Fluff Thickness (feet)*	-16' and above
— Federal Navigation Center Line	□ Placement Area	● Shoalest Sounding**	-16' to -21'
— As-built Pipeline/Cable	□ Anchorage Area	★ Beacon, General	-21' to -26'
..... Unconfirmed Pipeline/Cable	⊗ Obstruction Point	◆ Red Navigation Buoy	-26' to -33'
— Project Depth Contour	⊙ Wrecks-Submerged	◇ Green Navigation Buoy	-33' to -39'
			-39' to -41'
			-41' to -43'
			-43' and below

