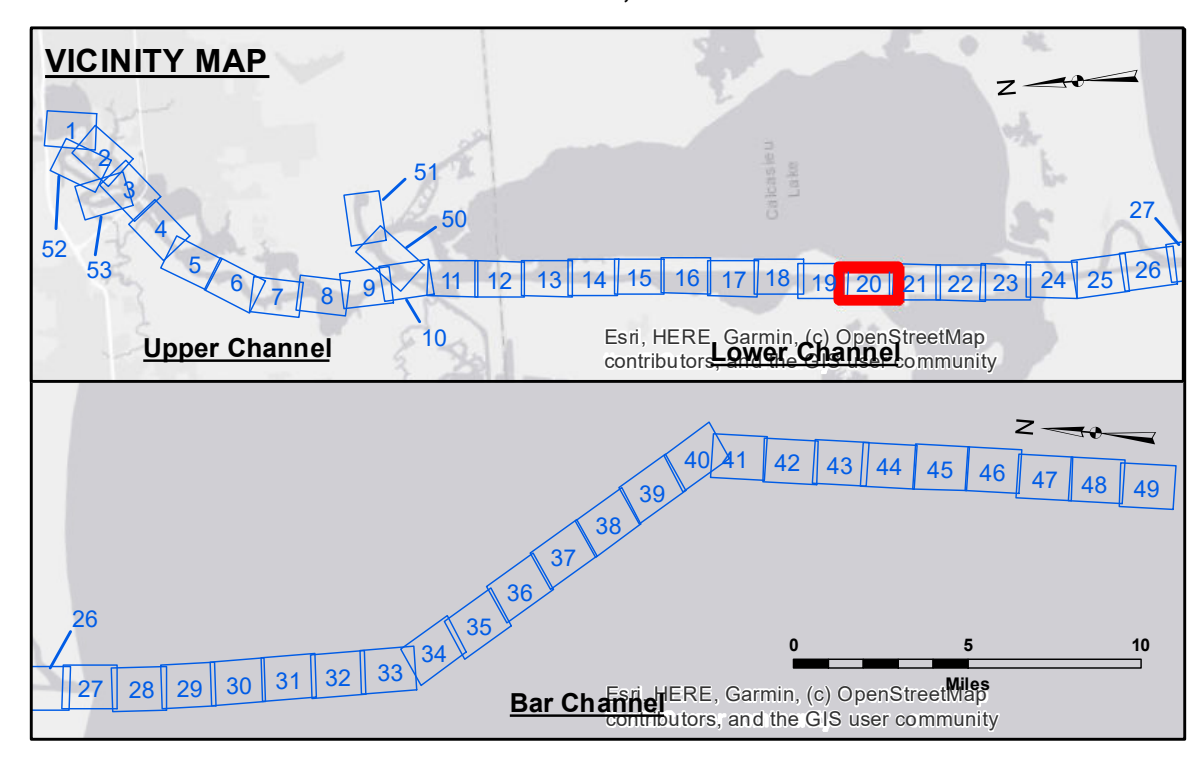


DISCLAIMER
 The United States Government furnishes these data and the recipient accepts and uses them with the express understanding that the Government makes no warranty, expressed or implied, concerning the accuracy, completeness, reliability, usability, or availability for any particular purpose of the information. The user is responsible for the results obtained from the use of this information. Application of the data for other than its intended purpose is at the user's risk. The user shall not hold the United States Government liable for any damage or loss resulting from the use of this information. The information depicted on this map represents the results of a hydrographic survey conducted in accordance with the standards of the hydrographic community. The user shall not hold the United States Government liable for any damage or loss resulting from the use of this information. The information depicted on this map represents the results of a hydrographic survey conducted in accordance with the standards of the hydrographic community. The user shall not hold the United States Government liable for any damage or loss resulting from the use of this information.

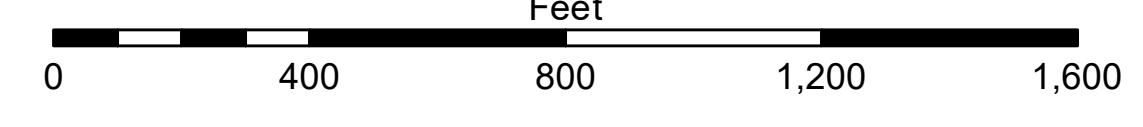
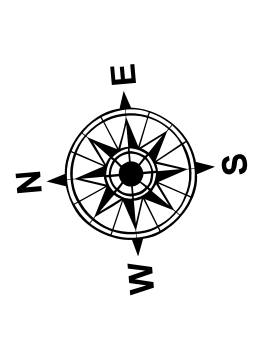
Submitted:	Surveyed By: SP-JS
Recommended:	Plotted By: JH
Approved:	Checked By: JH

Chief, Waterways Maintenance Section

CALCASIEU SHIP CHANNEL
LOWER SHEET 20
CR_20_LWR_20240618_AD
18 June 2024



LEGEND		
--- Federal Navigation Channel	○ Cable Area	3 Fluff Thickness (feet)*
— Federal Navigation Center Line	□ Placement Area	● Shoalest Sounding**
— As-built Pipeline/Cable	⊗ Anchorage Area	★ Beacon, General
..... Unconfirmed Pipeline/Cable	⊗ Obstruction Point	◆ Red Navigation Buoy
— Project Depth Contour	⊗ Wrecks-Submerged	◆ Green Navigation Buoy



Gage Reading: DM 72 VRN: 2.90 MLLW AVG
 Sea Conditions: CHOPPY
 Vessel Name: OB169
 Survey Type: AD
 Sounding Frequency***: LOW

NOTES:
 Horizontal Coordinate System: North American Datum of 1983 (NAD83), projected to the State Plane Coordinate System (SPCS), Louisiana South Zone. Distance units in U.S. Survey Feet.
 Vertical Datum: Soundings are shown in feet and indicate depths below Mean Lower Low Water Datum (MLLW). Datum Relationships for gage 73615 as of December 2013: 0.0' NAVD83 (2009.55) = 1.1' MLLW = 2.1' MLG or 0.0' MLLW = 1.0' MLG
 Distances on the Calcasieu River are shown at 1 mile intervals.
 The location of navigation aids are based on and provided by the U.S. Coast Guard and USACE survey crews.
 2022 Aerial Photography data source: PAR LLC
 Reference is N.O.A. Navigation Chart No. 11339.
 * Difference between high and low frequency elevations where greater than 1.0'.
 ** Shoalest Sounding per Quarter per Reach.
 *** High frequency (200 kHz) survey data represents the first signal return at a sounding location and will include suspended solids, known as "fluff", if present. Low frequency (20 kHz) survey data normally penetrates through this "fluff" layer to depict elevations of consolidated bottom material. Low frequency accuracies may vary depending on channel conditions and fathometer settings.

Sheet Reference Number
20 of 53