



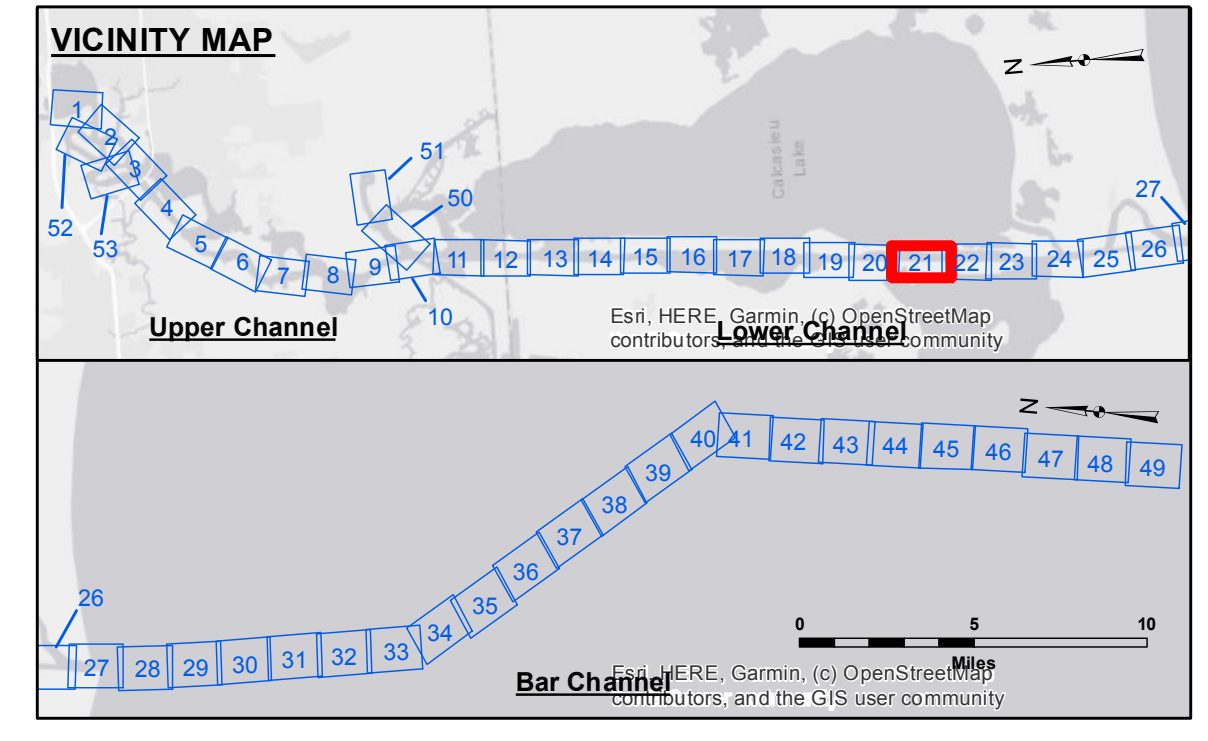
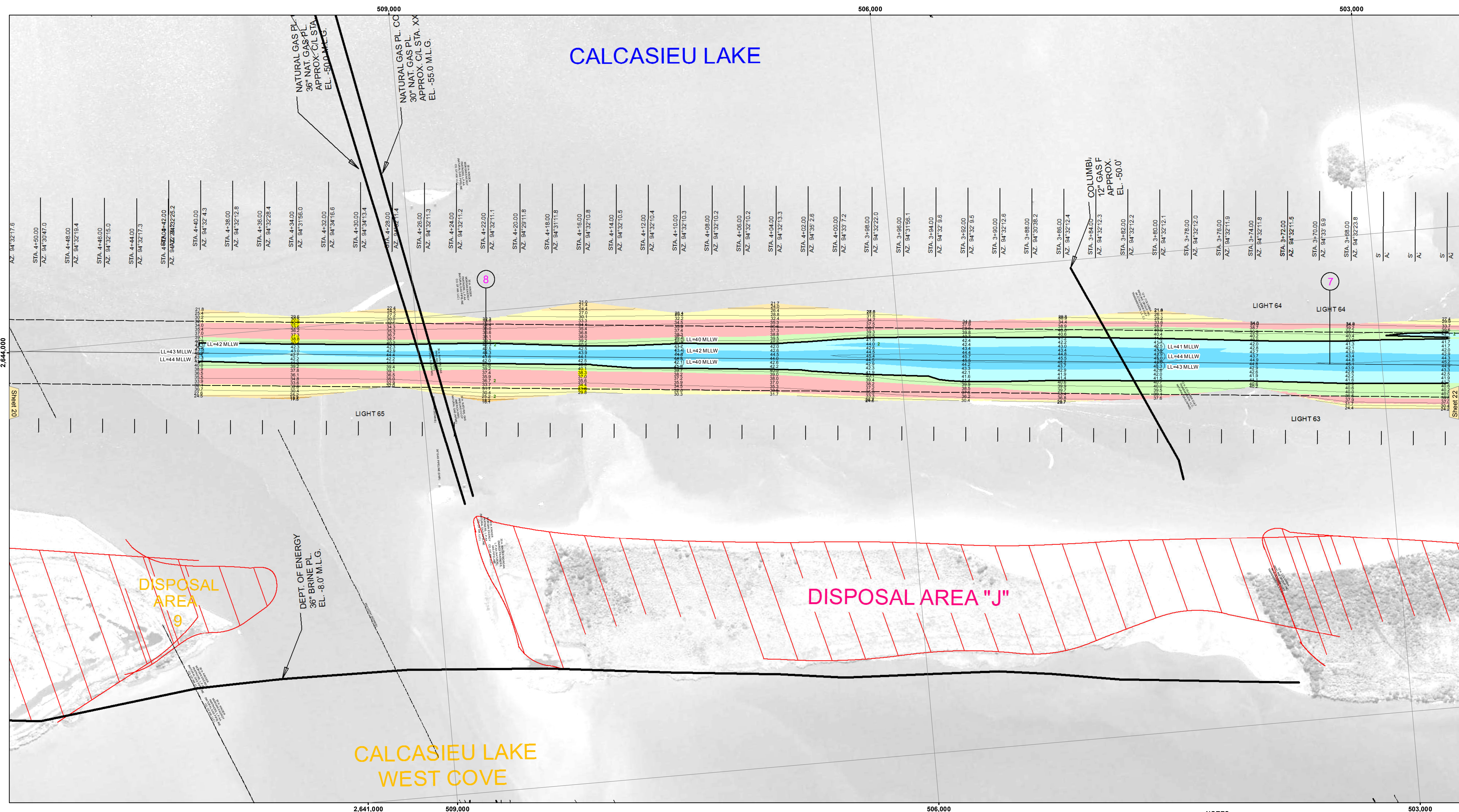
Access/Use: The United States Government furnishes these data and the recipient accepts and uses them with the express warranty, or implied concerning the accuracy, completeness, reliability, usability or suitability for any particular purpose of the information. The user is responsible for the results of their use. The user shall not hold the United States Government liable for any damage, injury, loss, or expense, or for any liability whatsoever to any person by reason of any use made in reliance on these data. The user shall not transfer these data to others without also transferring the Disclaimer. The information depicted on this map represents the results of a hydrographic survey conducted on or after the date of the survey. The user is advised that the information is not intended to represent the general condition existing at that time.

Table with columns: Submitted, Recommended, Approved. Includes names DS/PS, JHT, and AC.

CALCASIEU SHIP CHANNEL LOWER SHEET 21 CR\_21\_LWR\_20210720\_CS 20 July 2021

Sheet Reference Number 21 of 53

Revision Number: 4.1-20191105



LEGEND section containing symbols for Federal Navigation Channel, Cable Area, Placement Area, Anchorage Area, Obstruction Point, Wrecks-Submerged, Fluff Thickness, Shoalest Sounding, Beacons, Navigation Buoys, and Depth Contours.

Navigation aids section including a compass rose, a scale bar in feet (0 to 1,600), and technical specifications for Gage Reading, Sea Conditions, Vessel Name, Survey Type, and Sounding Frequency.

NOTES: Horizontal Coordinate System: North American Datum of 1983 (NAD83), projected to the State Plane Coordinate System (SPCS), Louisiana South Zone. Vertical Datum: Soundings are shown in feet and indicate depths below Mean Lower Low Water Datum (MLLW). Distances on the Calcasieu River are shown at 1 mile intervals. The location of navigation aids are based on and provided by the U.S. Coast Guard and USACE survey crews. 2015 Aerial Photography data source: NAIP. Reference is N.O.A. Navigation Chart No. 11339. \* Difference between high and low frequency elevations where greater than 1.0'. \*\* Shoalest Sounding per Quarter per Reach. \*\*\* High frequency (200 kHz) survey data represents the first signal return at a sounding location and will include suspended solids, known as "fluff", if present.