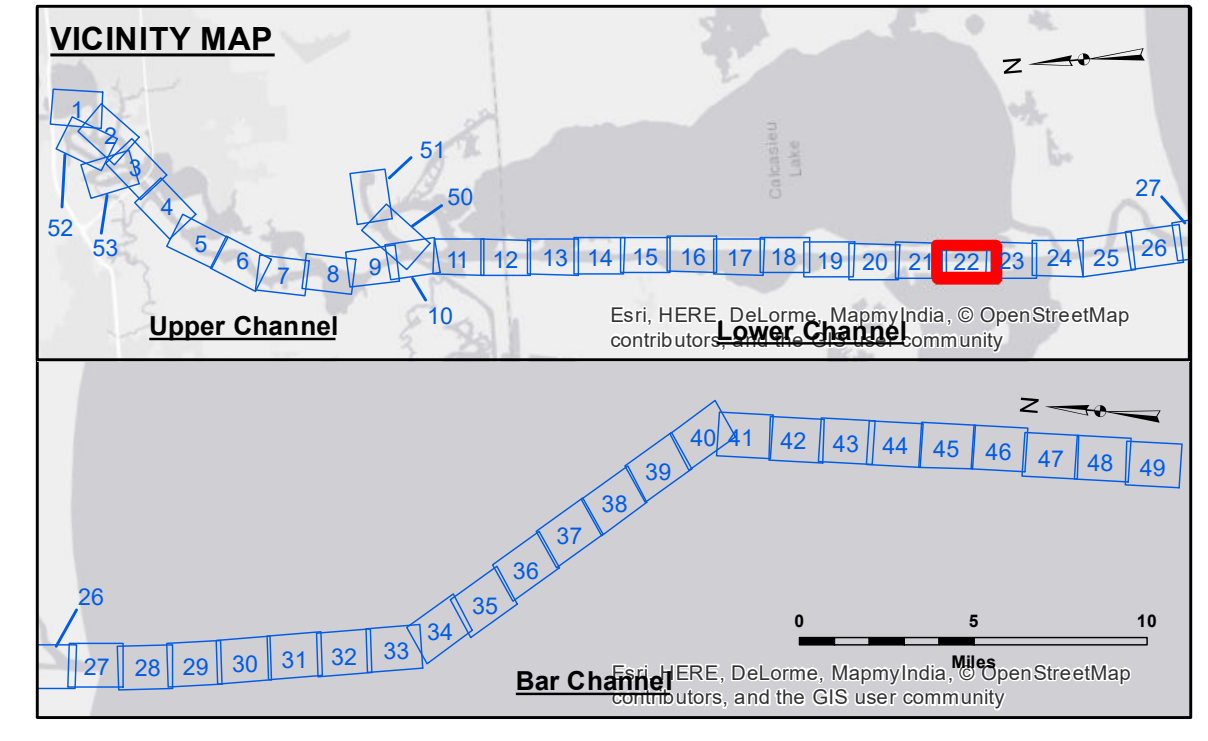


**Access/Availability:** The United States Government furnishes these data and the recipient accepts and uses them with the express understanding that they are not to be distributed, reproduced, or used for any purpose other than that for which they were originally prepared. The user is responsible for the results of any use of these data. The Corps of Engineers does not assume any liability for any use of these data for other than the intended purpose. The Corps of Engineers does not assume any liability for any use of these data for other than the intended purpose.

**Disclaimer:** The information depicted on this map represents the results of a survey conducted on or about the date shown. The Corps of Engineers does not assume any liability for any use of these data for other than the intended purpose. The Corps of Engineers does not assume any liability for any use of these data for other than the intended purpose.

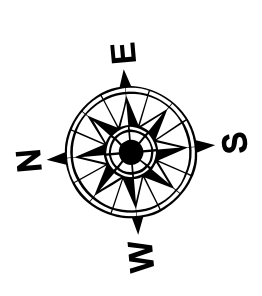
Submitted:	Surveyed By:	Checked By:
Recommended:	Plotted By:	Checked By:
Approved:	Chief, Survey Section	Checked By:
	Chief, Waterways Maintenance Section	Checked By:

**CALCASIEU SHIP CHANNEL**  
**LOWER SHEET 22**  
**CR\_22\_LWR\_20180918\_CS**  
**18 September 2018**

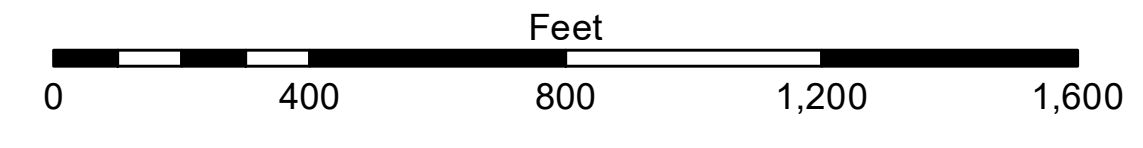


**LEGEND**

- - - Federal Navigation Channel	○ Cable Area	□ Borrow Area	-16' and above
— Federal Navigation Center Line	□ Placement Area	● Shoalest Sounding**	-16' to -21'
— As-built Pipeline/Cable	□ Anchorage Area	☆ Beacon, General	-21' to -26'
..... Unconfirmed Pipeline/Cable	⊗ Obstruction Point	◆ Red Navigation Buoy	-26' to -33'
— Project Depth Contour	⊙ Wrecks-Submerged	◆ Green Navigation Buoy	-33' to -39'
			-39' to -41'
			-41' to -43'
			-43' and below



Gage Reading: DM57: 1.95 MLLW USED  
 Sea Conditions: CALM  
 Vessel Name: OB-167  
 Survey Type: CONDITION  
 Sounding Frequency\*\*\*: LOW



**NOTES:**  
 Horizontal Coordinate System:  
 North American Datum of 1983 (NAD83), projected to the State Plane  
 Coordinate System (SPCS), Louisiana South Zone. Distance units in U.S. Survey Feet.  
 Vertical Datum:  
 Soundings are shown in feet and indicate depths below Mean Lower Low Water Datum (MLLW).  
 Datum Relationships for gage 73625 as of December 2013:  
 0.0' NAVD83 (2009.55) = 1.2' MLLW = 2.2' MGLG or 0.0' MLLW = 1.0' MGLG  
 Distances on the Calcasieu River are shown at 1 mile intervals.  
 The location of navigation aids are based on and provided by the U.S. Coast Guard  
 and USACE survey crews.  
 2015 Aerial Photography data source: NAIP  
 Reference is N.O.A. Navigation Chart No. 11339.  
 \* Difference between high and low frequency elevations where greater than 1.0'.  
 \*\* Shoalest Sounding per Quarter per Reach.  
 \*\*\* High frequency (200 kHz) survey data represents the first signal return at a sounding  
 location and will include suspended solids, known as "fluff", if present. Low frequency (20 kHz)  
 survey data normally penetrates through this "fluff" layer to depict elevations of consolidated bottom  
 material. Low frequency accuracies may vary depending on channel conditions and fathometer  
 settings.

**Sheet Reference Number**  
**22 of 53**