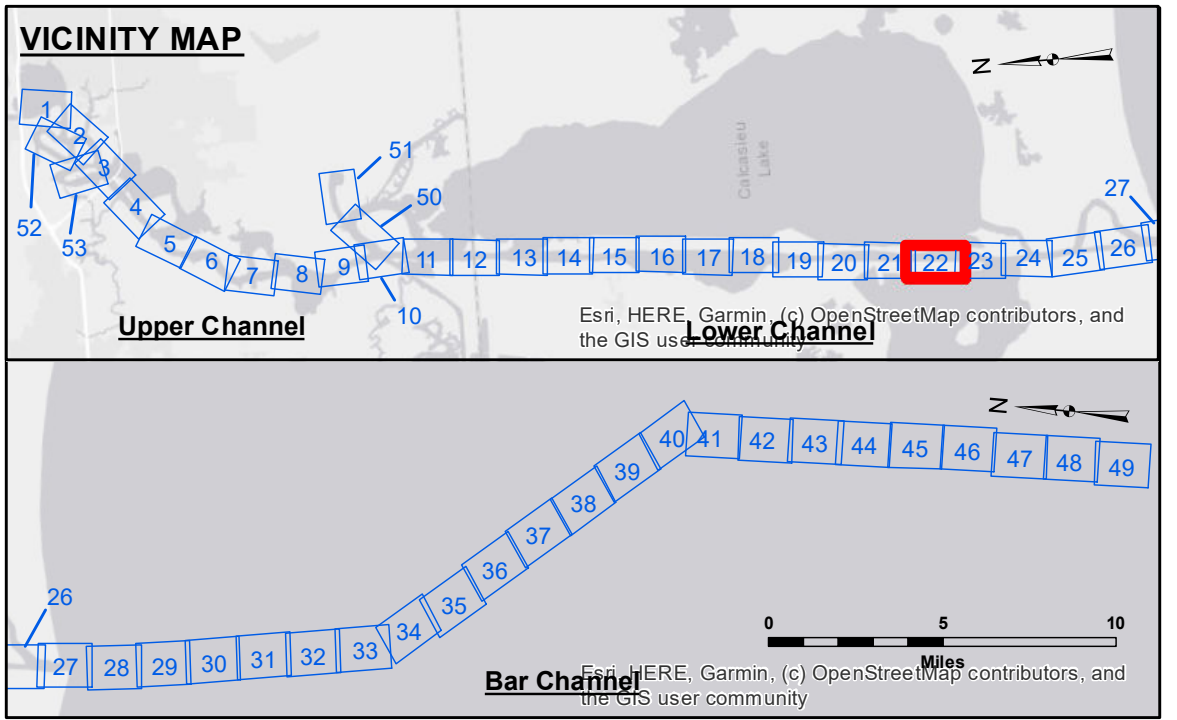


DISCLAIMER
 The information depicted on this map represents the results of a survey conducted by the United States Government. The user of this information is advised that the United States Government does not warrant the accuracy, reliability, or availability of the information for any purpose other than that for which it was prepared. The user is responsible for the results of any use of this information. The user is advised that the United States Government does not accept any liability for damages, including consequential damages, arising from the use of this information. The user is advised that the United States Government does not accept any liability for changes in the information depicted on this map. The user is advised that the United States Government does not accept any liability for changes in the information depicted on this map. The user is advised that the United States Government does not accept any liability for changes in the information depicted on this map.

Submitted:	RYLAND/ADAMS
Recommended:	Chief, Survey Section
Plotted By:	BD
Checked By:	AC

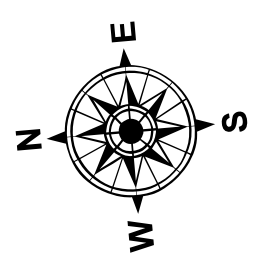
U.S. ARMY CORPS OF ENGINEERS
 NEW ORLEANS DISTRICT
 Chief, Waterways Maintenance Section

**CALCASIEU SHIP CHANNEL
 LOWER SHEET 22
 CR_22_LWR_20201013_CS
 13 October 2020**

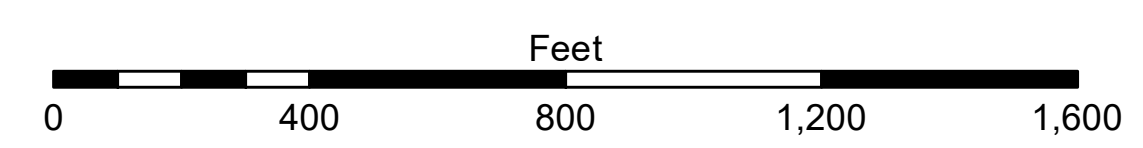


LEGEND	
--- Federal Navigation Channel	● Cable Area
— Federal Navigation Center Line	□ Placement Area
— As-built Pipeline/Cable	□ Anchorage Area
..... Unconfirmed Pipeline/Cable	⊗ Obstruction Point
— Project Depth Contour	★ Wrecks-Submerged
□ Borrow Area	★ Beacon, General
● Shoalest Sounding**	◆ Red Navigation Buoy
★ Beacon, General	◆ Green Navigation Buoy

-16' and above	■
-16' to -21'	■
-21' to -26'	■
-26' to -33'	■
-33' to -39'	■
-39' to -41'	■
-41' to -43'	■
-43' and below	■



Gage Reading: CAMERON: 2.17 MLLW AVG.
 Sea Conditions: CALM
 Vessel Name: M/V VALENTOUR
 Survey Type: CONDITION
 Sounding Frequency***: LOW



NOTES:
 Horizontal Coordinate System:
 North American Datum of 1983 (NAD83), projected to the State Plane
 Coordinate System (SPCS), Louisiana South Zone. Distance units in U.S. Survey Feet.
 Vertical Datum:
 Soundings are shown in feet and indicate depths below Mean Lower Low Water Datum (MLLW).
 Datum Relationships for gage 73625 as of December 2013:
 0.0' NAVD83 (2009.55) = 1.2' MLLW = 2.2' MLG or 0.0' MLLW = 1.0' MLG
 Distances on the Calcasieu River are shown at 1 mile intervals.
 The location of navigation aids are based on and provided by the U.S. Coast Guard
 and USACE survey crews.
 2015 Aerial Photography data source: NAIP
 Reference is N.O.A.A. Navigation Chart No. 11339.
 * Difference between high and low frequency elevations where greater than 1.0'.
 ** Shoalest Sounding per Quarter per Reach.
 *** High frequency (200 kHz) survey data represents the first signal return at a sounding
 location and will include suspended solids, known as "fluff", if present. Low frequency (20 kHz)
 survey data normally penetrates through this "fluff" layer to depict elevations of consolidated bottom
 material. Low frequency accuracies may vary depending on channel conditions and fathometer
 settings.

**Sheet
 Reference
 Number
 22 of 53**