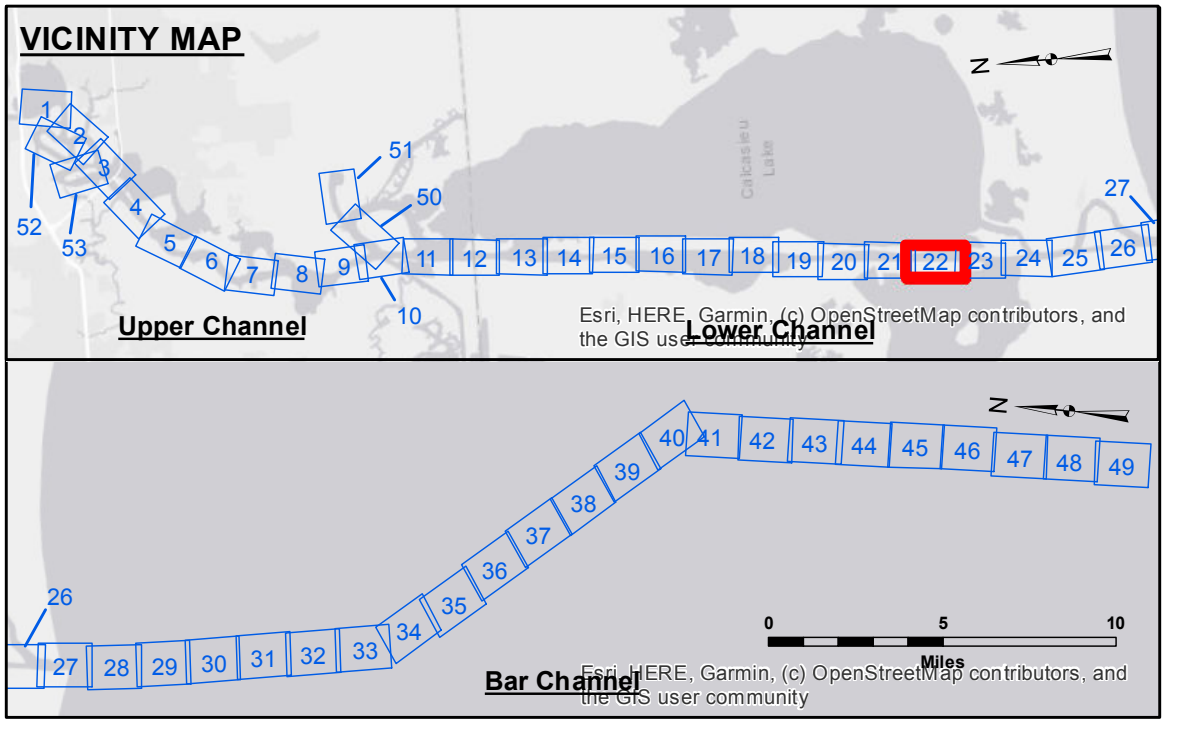


**DISCLAIMER**  
 The United States Government furnishes these data and the recipient accepts and uses them with the express understanding that the data are not to be used for any purpose other than that for which they were originally collected, expressed, or intended. The user is responsible for the accuracy, completeness, reliability, usability, or suitability for any particular purpose of the data. The user is responsible for the accuracy, completeness, reliability, usability, or suitability for any particular purpose of the data. The user is responsible for the accuracy, completeness, reliability, usability, or suitability for any particular purpose of the data. The user is responsible for the accuracy, completeness, reliability, usability, or suitability for any particular purpose of the data.

Submitted:	Surveyed By:	SP:PM
Recommended:	Plotted By:	BD
Approved:	Chief, Survey Section	AC
	Chief, Waterways Maintenance Section	

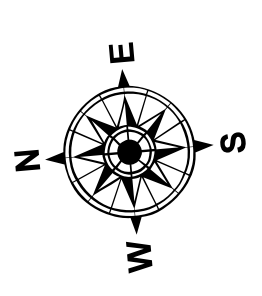
**CALCASIEU SHIP CHANNEL  
 LOWER SHEET 22  
 CR\_22\_LWR\_20210930\_CS  
 30 September 2021**

**Sheet Reference Number  
 22 of 53**

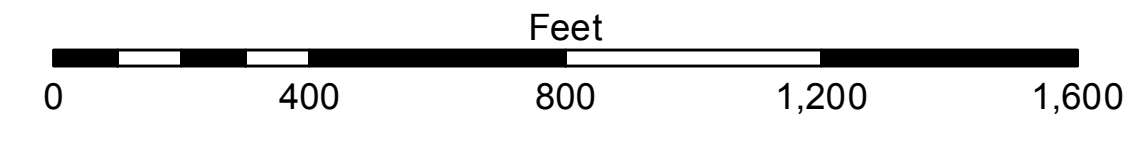


**LEGEND**

--- Federal Navigation Channel	○ Cable Area	□ Borrow Area	■ -16' and above
— Federal Navigation Center Line	□ Placement Area	● Shoalest Sounding**	■ -16' to -21'
— As-built Pipeline/Cable	□ Anchorage Area	★ Beacon, General	■ -21' to -26'
..... Unconfirmed Pipeline/Cable	⊗ Obstruction Point	◆ Red Navigation Buoy	■ -26' to -33'
— Project Depth Contour	⚓ Wrecks-Submerged	◆ Green Navigation Buoy	■ -33' to -39'
			■ -39' to -41'
			■ -41' to -43'
			■ -43' and below



Gage Reading: DM 57: 1.9 MLLW  
 Sea Conditions: CALM  
 Vessel Name: OB-167  
 Survey Type: CONDITION  
 Sounding Frequency\*\*\*: LOW



**NOTES:**  
 Horizontal Coordinate System:  
 North American Datum of 1983 (NAD83), projected to the State Plane Coordinate System (SPCS), Louisiana South Zone. Distance units in U.S. Survey Feet.  
 Vertical Datum:  
 Soundings are shown in feet and indicate depths below Mean Lower Low Water Datum (MLLW). Datum Relationships for gage 73625 as of December 2013:  
 0.0' NAVD83 (2009.55) = 1.2' MLLW = 2.2' MLG or 0.0' MLLW = 1.0' MLG  
 Distances on the Calcasieu River are shown at 1 mile intervals.  
 The location of navigation aids are base on and provided by the U.S. Coast Guard and USACE survey crews.  
 2015 Aerial Photography data source: NAIP  
 Reference is N.O.A. Navigation Chart No. 11339.  
 \* Difference between high and low frequency elevations where greater than 1.0'.  
 \*\* Shoalest Sounding per Quarter per Reach.  
 \*\*\* High frequency (200 kHz) survey data represents the first signal return at a sounding location and will include suspended solids, known as "fluff", if present. Low frequency (20 kHz) survey data normally penetrates through this "fluff" layer to depict elevations of consolidated bottom material. Low frequency accuracies may vary depending on channel conditions and fathometer settings.