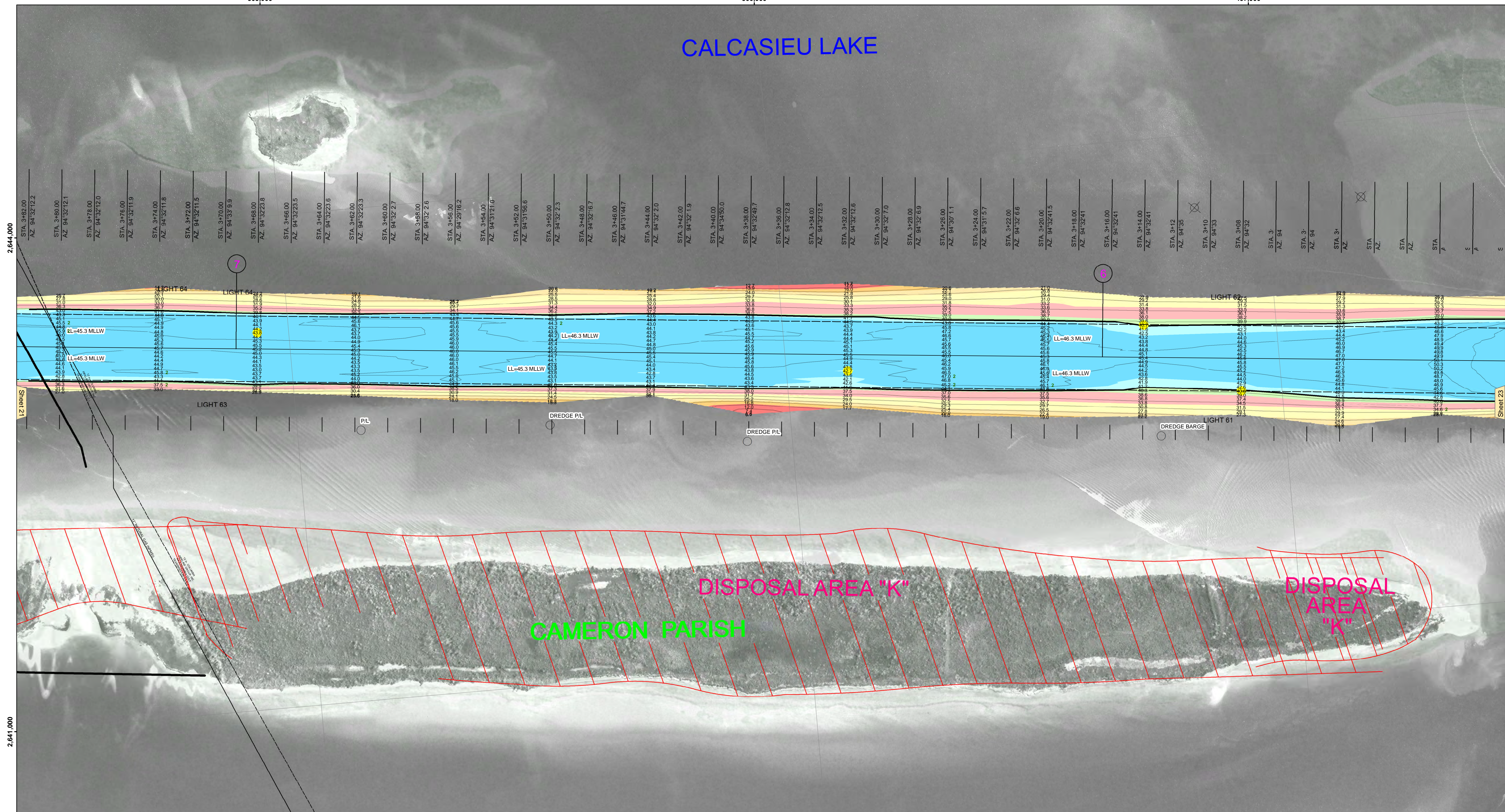


503,000 500,000 497,000

CALCASIEU LAKE

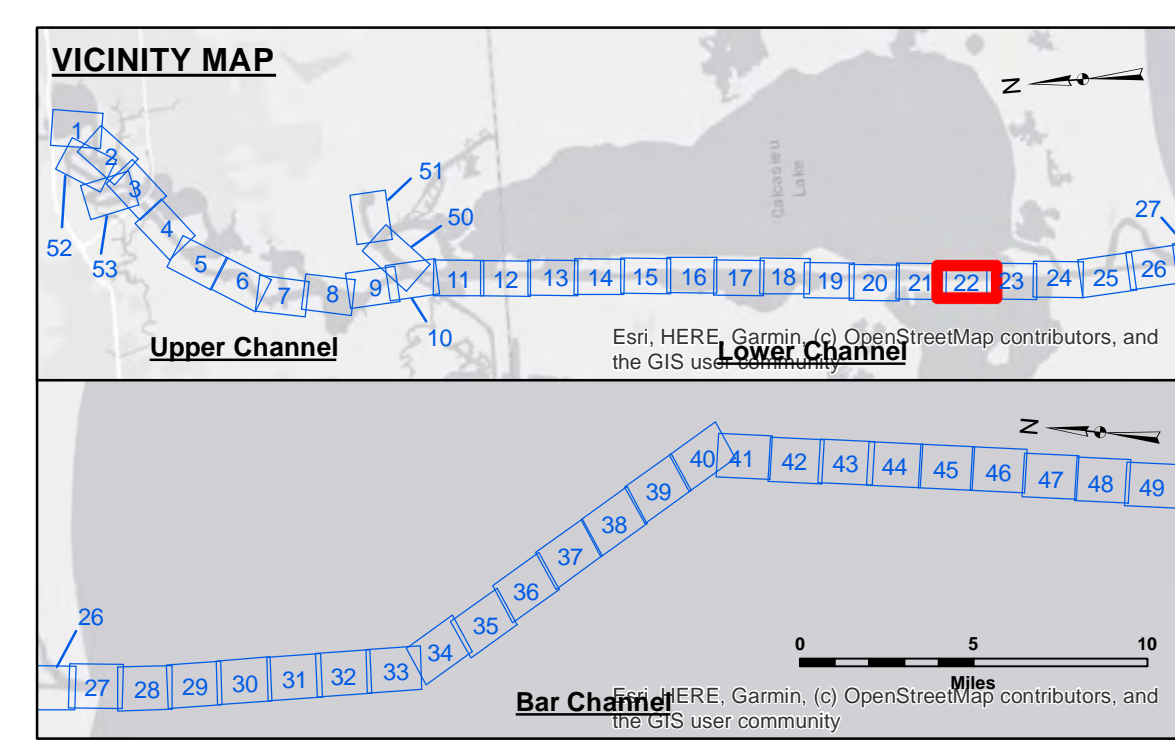


2,644,000

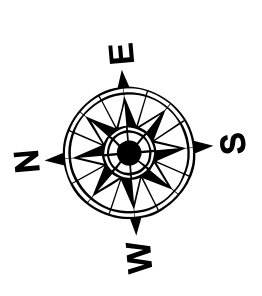
2,644,000

2,641,000

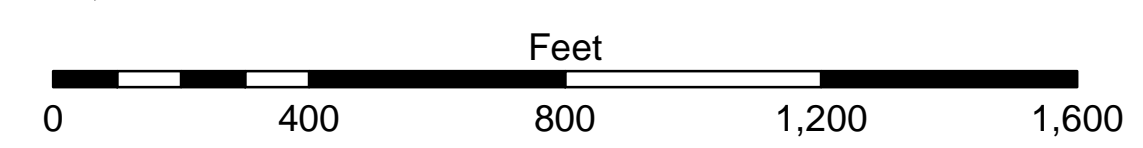
2,641,000



LEGEND			
--- Federal Navigation Channel	○ Cable Area	□ Borrow Area	■ -16' and above
— Federal Navigation Center Line	□ Placement Area	● Shoalest Sounding**	■ -16' to -21'
— As-built Pipeline/Cable	□ Anchorage Area	★ Beacon, General	■ -21' to -26'
..... Unconfirmed Pipeline/Cable	⊗ Obstruction Point	◆ Red Navigation Buoy	■ -26' to -33'
— Project Depth Contour	⚓ Wrecks-Submerged	◆ Green Navigation Buoy	■ -33' to -39'
			■ -39' to -41'
			■ -41' to -43'
			■ -43' and below



Gage Reading: DM 57 VRN: 1.73 MLLW AVG.
 Sea Conditions: CALM
 Vessel Name: M/V TECHE
 Survey Type: CONDITION
 Sounding Frequency***: LOW



NOTES:
 Horizontal Coordinate System: North American Datum of 1983 (NAD83), projected to the State Plane Coordinate System (SPCS), Louisiana South Zone. Distance units in U.S. Survey Feet.
 Vertical Datum: Soundings are shown in feet and indicate depths below Mean Lower Low Water Datum (MLLW). Datum Relationships for gage 73625 as of December 2013: 0.0' NAVD83 (2009.55) = 1.2' MLLW = 2.2' MLG or 0.0' MLLW = 1.0' MLG
 Distances on the Calcasieu River are shown at 1 mile intervals.
 The location of navigation aids are base on and provided by the U.S. Coast Guard and USACE survey crews.
 2022 Aerial Photography data source: PAR LLC
 Reference is N.O.A. Navigation Chart No. 11339.
 * Difference between high and low frequency elevations where greater than 1.0'.
 ** Shoalest Sounding per Quarter per Reach.
 *** High frequency (200 kHz) survey data represents the first signal return at a sounding location and will include suspended solids, known as "fluff", if present. Low frequency (20 kHz) survey data normally penetrates through this "fluff" layer to depict elevations of consolidated bottom material. Low frequency accuracies may vary depending on channel conditions and fathometer settings.



DISCLAIMER
 The United States Government furnishes these data and the recipient accepts and uses them with the express understanding that the data are not warranted for accuracy, completeness, reliability, usability or suitability for any particular purpose of the recipient. The user is responsible for the results of any use of the data. The recipient agrees to hold the United States Government harmless for any use of the data for other than the intended purpose.
 Data Constraints: Hydrographic survey data is subject to change rapidly due to several factors including but not limited to changing hydrological conditions which develop after the date of the survey. The United States Government does not accept responsibility for changes in the hydrological conditions which develop after the date of the survey. The recipient agrees to hold the United States Government harmless for any use of the data for other than the intended purpose.
 The information depicted on the map represents the results of a survey conducted on the date indicated. It is not intended to represent the general condition existing at that time.

Submitted:	Surveyed By: SP-JS
Recommended:	Plotted By: BD
Checked By: AD/JH	Checked By: AD/JH

U.S. ARMY CORPS OF ENGINEERS
 NEW ORLEANS DISTRICT
 Chart, Survey Section
 Chart, Waterways Maintenance Section

**CALCASIEU SHIP CHANNEL
 LOWER SHEET 22
 CR_22_LWR_20241028_CS
 28 October 2024**

**Sheet Reference Number
 22 of 53**

Revision Number:
 4.2-2020/04/20