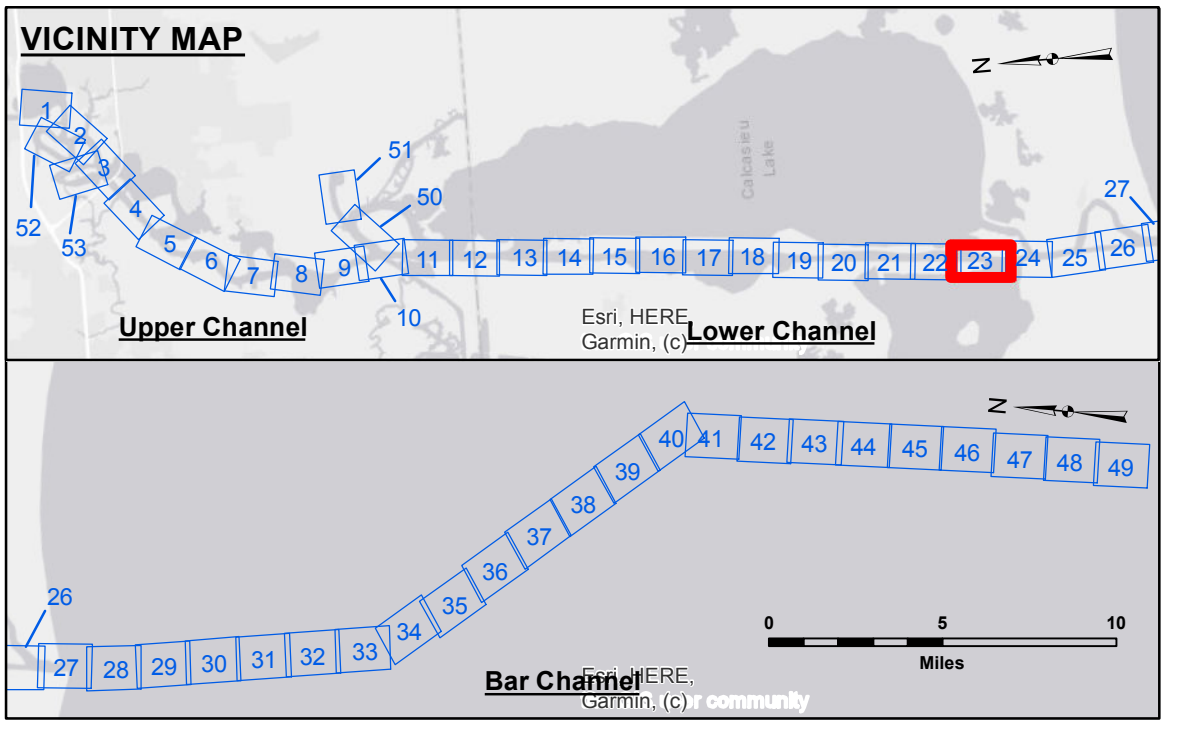
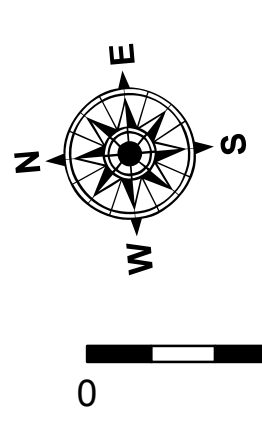


DISCLAIMER
 The information depicted on this map represents the results of a survey conducted by the United States Government. The data represents the results of data collection/processing for a specific US Army Corps of Engineers project. It is not intended for use for any other purpose, and its use for any other purpose is at the user's risk. The user is responsible for the accuracy, reliability, and validity of the data for their intended use. The user is responsible for the accuracy, reliability, and validity of the data for their intended use. The user is responsible for the accuracy, reliability, and validity of the data for their intended use. The user is responsible for the accuracy, reliability, and validity of the data for their intended use.

| | |
|--|--|
| U.S. ARMY CORPS OF ENGINEERS NEW ORLEANS DISTRICT | |
| Surveyed By: RYLAND/ADAMS | Plotted By: JH |
| Submitted: | Checked By: JH |
| Recommended: Chief Survey Section | Approved: Chief Waterways Maintenance Section |



| LEGEND | |
|----------------------------------|-------------------------|
| --- Federal Navigation Channel | ○ Cable Area |
| — Federal Navigation Center Line | □ Placement Area |
| — As-built Pipeline/Cable | □ Anchorage Area |
| Unconfirmed Pipeline/Cable | ⊗ Obstruction Point |
| — Project Depth Contour | ⚓ Wrecks-Submerged |
| 3 Fluff Thickness (feet)* | ★ Beacon, General |
| ● Shoalest Sounding** | ◆ Red Navigation Buoy |
| ★ Beacon, General | ◆ Green Navigation Buoy |



Gage Reading: DM57: 1.40 MLLW
 Sea Conditions: CALM
 Vessel Name: M/V VALENTOUR
 Survey Type: CONDITION
 Sounding Frequency***: LOW

Scale: 0 400 800 1,200 1,600 Feet

NOTES:
 Horizontal Coordinate System:
 North American Datum of 1983 (NAD83), projected to the State Plane Coordinate System (SPCS), Louisiana South Zone. Distance units in U.S. Survey Feet.
 Vertical Datum:
 Soundings are shown in feet and indicate depths below Mean Lower Low Water Datum (MLLW).
 Datum Relationships for gage 73625 as of December 2013:
 0.0' NAVD83 (2009.55) = 1.2' MLLW = 2.2' MLG or 0.0' MLLW = 1.0' MLG
 Distances on the Calcasieu River are shown at 1 mile intervals.
 The location of navigation aids are based on and provided by the U.S. Coast Guard and USACE survey crews.
 2015 Aerial Photography data source: NAIP
 Reference is N.O.A. Navigation Chart No. 11339.
 * Difference between high and low frequency elevations where greater than 1.0'.
 ** Shoalest Sounding per Quarter per Reach.
 *** High frequency (200 kHz) survey data represents the first signal return at a sounding location and will include suspended solids, known as "fluff", if present. Low frequency (20 kHz) survey data normally penetrates through this "fluff" layer to depict elevations of consolidated bottom material. Low frequency accuracies may vary depending on channel conditions and fathometer settings.

**CALCASIEU SHIP CHANNEL
 LOWER SHEET 23
 CR_23_LWR_20210824_CS
 24 August 2021**

**Sheet Reference Number
 23 of 53**