

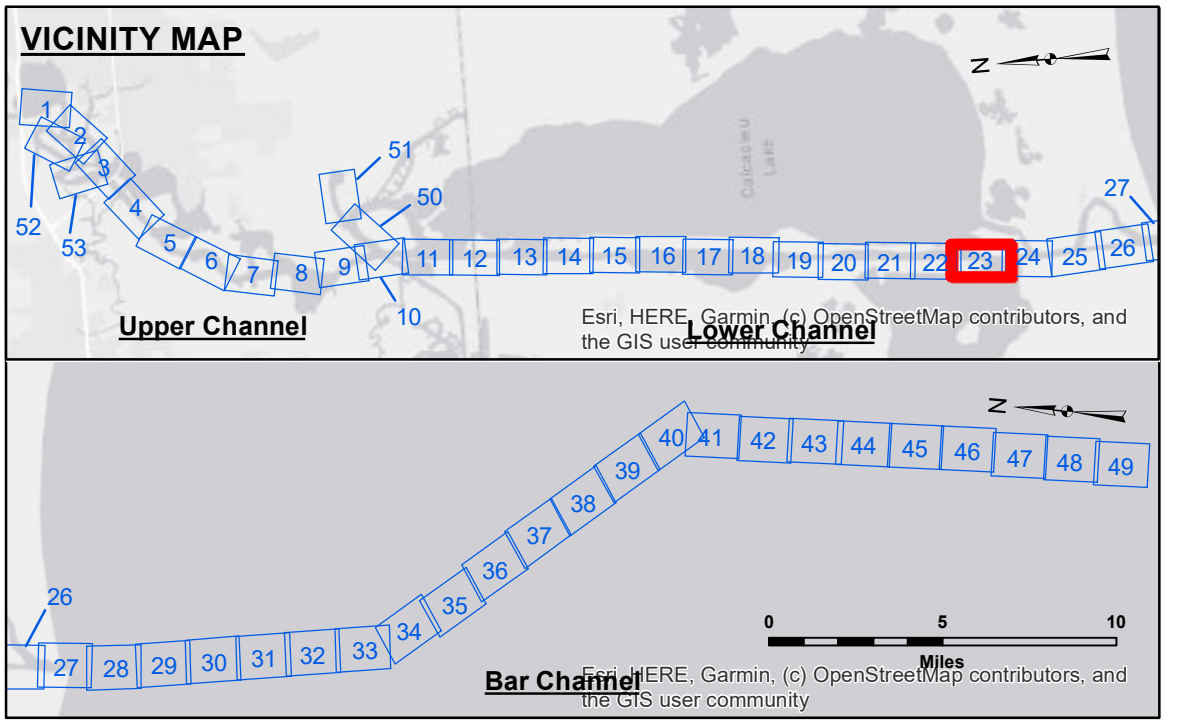
DISCLAIMER: The United States Government furnishes these data and the recipient accepts and uses them with the express understanding that the Government makes no warranty, expressed, implied, or otherwise, concerning the accuracy, completeness, reliability, usability, or suitability for any particular purpose of the information furnished. The user is responsible for the results obtained from the use of this information. The user shall indemnify and hold the United States Government harmless from all claims, damages, and expenses, including reasonable attorneys' fees, which may be incurred by the recipient as a result of its use of this information. The information depicted on this map represents the results of a survey conducted on or after the date of this map. The user is responsible for determining the accuracy of the information depicted on this map. The user is responsible for determining the accuracy of the information depicted on this map. The user is responsible for determining the accuracy of the information depicted on this map.

Submitted:	Surveyed By: SP/PS
Recommended: Chart Survey Section	Plotted By: BD
Approved: Chart, Waterways Maintenance Section	Checked By: AC

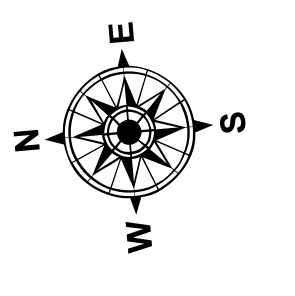
**CALCASIEU SHIP CHANNEL
LOWER SHEET 23
CR_23_LWR_20220119_CS
19 January 2022**

**Sheet Reference Number
23 of 53**

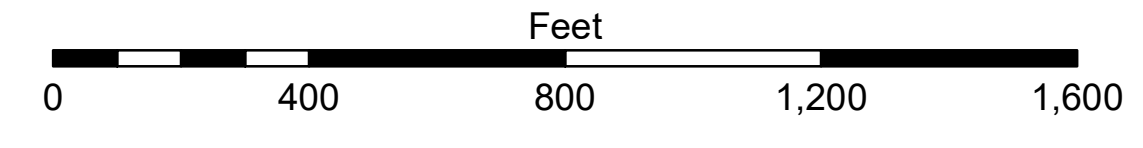
Revision Number:
4-2-2020(4/20)



LEGEND		
Federal Navigation Channel	Cable Area	Fluff Thickness (feet)*
Federal Navigation Center Line	Placement Area	Shoalest Sounding**
As-built Pipeline/Cable	Anchorage Area	Beacon, General
Unconfirmed Pipeline/Cable	Obstruction Point	Red Navigation Buoy
Project Depth Contour	Wrecks-Submerged	Green Navigation Buoy
		-16' and above
		-16' to -21'
		-21' to -26'
		-26' to -33'
		-33' to -39'
		-39' to -41'
		-41' to -43'
		-43' and below



Gage Reading: DM 57: -0.38 MLLW AVG.
Sea Conditions: CHOPPY
Vessel Name: MV LAFOURCHE
Survey Type: CONDITION
Sounding Frequency***: LOW



NOTES:
Horizontal Coordinate System:
North American Datum of 1983 (NAD83), projected to the State Plane
Coordinate System (SPCS), Louisiana South Zone. Distance units in U.S. Survey Feet.

Vertical Datum:
Soundings are shown in feet and indicate depths below Mean Lower Low Water Datum (MLLW).
Datum Relationships for gage 73625 as of December 2013:
0.0' NAVD83 (2009.55) = 1.2' MLLW = 2.2' MLG or 0.0' MLLW = 1.0' MLG

Distances on the Calcasieu River are shown at 1 mile intervals.

The location of navigation aids are base on and provided by the U.S. Coast Guard and USACE survey crews.

2015 Aerial Photography data source: NAIP

Reference is N.O.A. Navigation Chart No. 11339.

* Difference between high and low frequency elevations where greater than 1.0'.

** Shoalest Sounding per Quarter per Reach.

*** High frequency (200 kHz) survey data represents the first signal return at a sounding location and will include suspended solids, known as "fluff", if present. Low frequency (20 kHz) survey data normally penetrates through this "fluff" layer to depict elevations of consolidated bottom material. Low frequency accuracies may vary depending on channel conditions and fathometer settings.