

Access/Use: The United States Government furnishes these data and the recipient accepts and uses them with the express understanding that the data are not to be used for any purpose other than that for which they were originally collected, and that the user is responsible for the results of any use of the data for other than the intended purpose.

Disclaimer: Hydrographic survey data is subject to change due to several factors including but not limited to changing hydrographic conditions which develop after the date of the survey. The user is responsible for the results of any use of the data for other than the intended purpose.

Liability: The data represents the results of data collection/processing for a specific US Army Corps of Engineers project. It is only valid for its intended use, content, time and accuracy. The user is responsible for the results of any use of the data for other than the intended purpose.

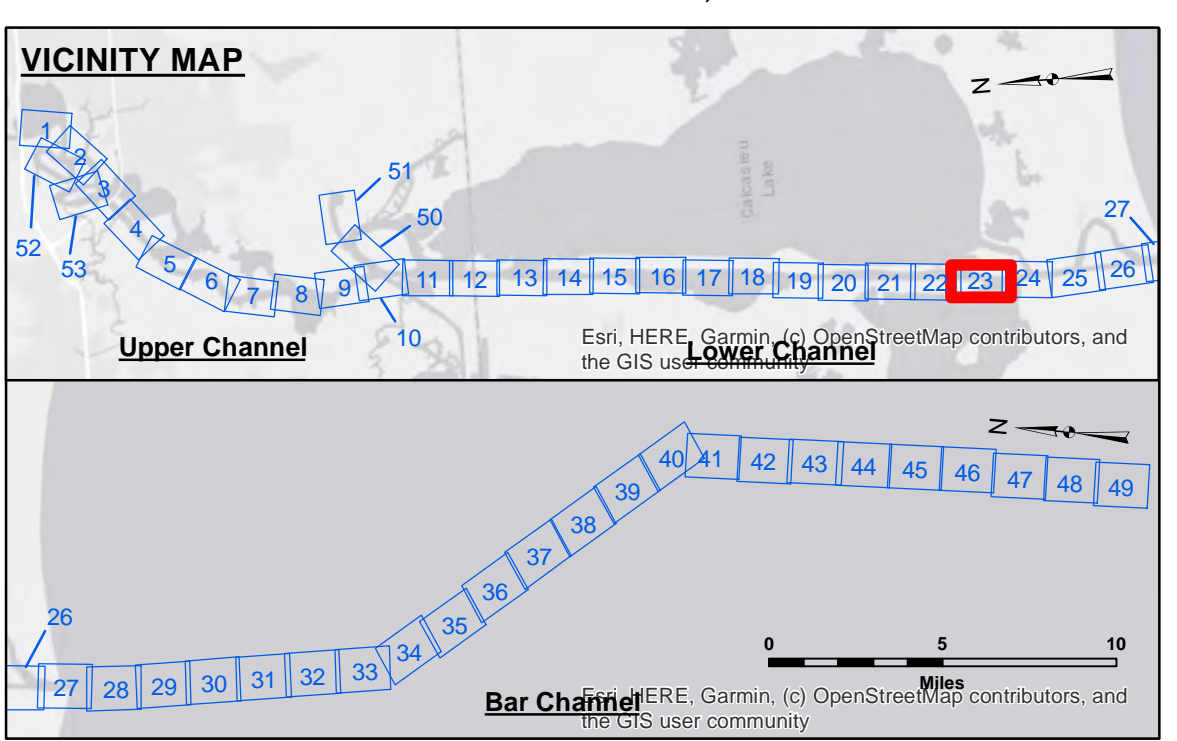
Product: Hydrographic survey data is subject to change due to several factors including but not limited to changing hydrographic conditions which develop after the date of the survey. The user is responsible for the results of any use of the data for other than the intended purpose.

Submitted:	Surveyed By: SP-JS
Recommended:	Plotted By: BD
Checked:	Checked By: ADJ/H
Approved:	Checked: Waterways Maintenance Section

CALCASIEU SHIP CHANNEL
LOWER SHEET 23
CR_23_LWR_20241028_CS
28 October 2024

Sheet Reference Number
23 of 53

Revision Number:
 4.2-20240820



LEGEND	
--- Federal Navigation Channel	● Cable Area
— Federal Navigation Center Line	□ Placement Area
— As-built Pipeline/Cable	□ Anchorage Area
..... Unconfirmed Pipeline/Cable	⊗ Obstruction Point
— Project Depth Contour	⚓ Wrecks-Submerged
3 Fluff Thickness (feet)*	★ Beacon, General
● Shoalest Sounding**	◆ Red Navigation Buoy
★ Beacon, General	◆ Green Navigation Buoy

NOTES:

Horizontal Coordinate System:
 North American Datum of 1983 (NAD83), projected to the State Plane Coordinate System (SPCS), Louisiana South Zone. Distance units in U.S. Survey Feet.

Vertical Datum:
 Soundings are shown in feet and indicate depths below Mean Lower Low Water Datum (MLLW).
 Datum Relationships for gage 73625 as of December 2013:
 0.0' NAVD83 (2009.55) = 1.2' MLLW = 2.2' MLG or 0.0' MLLW = 1.0' MLG

Distances on the Calcasieu River are shown at 1 mile intervals.

The location of navigation aids are based on and provided by the U.S. Coast Guard and USACE survey crews.

2022 Aerial Photography data source: PAR LLC
 Reference is N.O.A. Navigation Chart No. 11339.

* Difference between high and low frequency elevations where greater than 1.0'.
 ** Shoalest Sounding per Quarter per Reach.

*** High frequency (200 kHz) survey data represents the first signal return at a sounding location and will include suspended solids, known as "fluff", if present. Low frequency (20 kHz) survey data normally penetrates through this "fluff" layer to depict elevations of consolidated bottom material. Low frequency accuracies may vary depending on channel conditions and fathometer settings.

Gage Reading: DM 57 VRN: 1.73 MLLW AVG.
 Sea Conditions: CALM
 Vessel Name: M/V TECHE
 Survey Type: CONDITION
 Sounding Frequency***: LOW

Scale: 0 to 1,600 Feet