

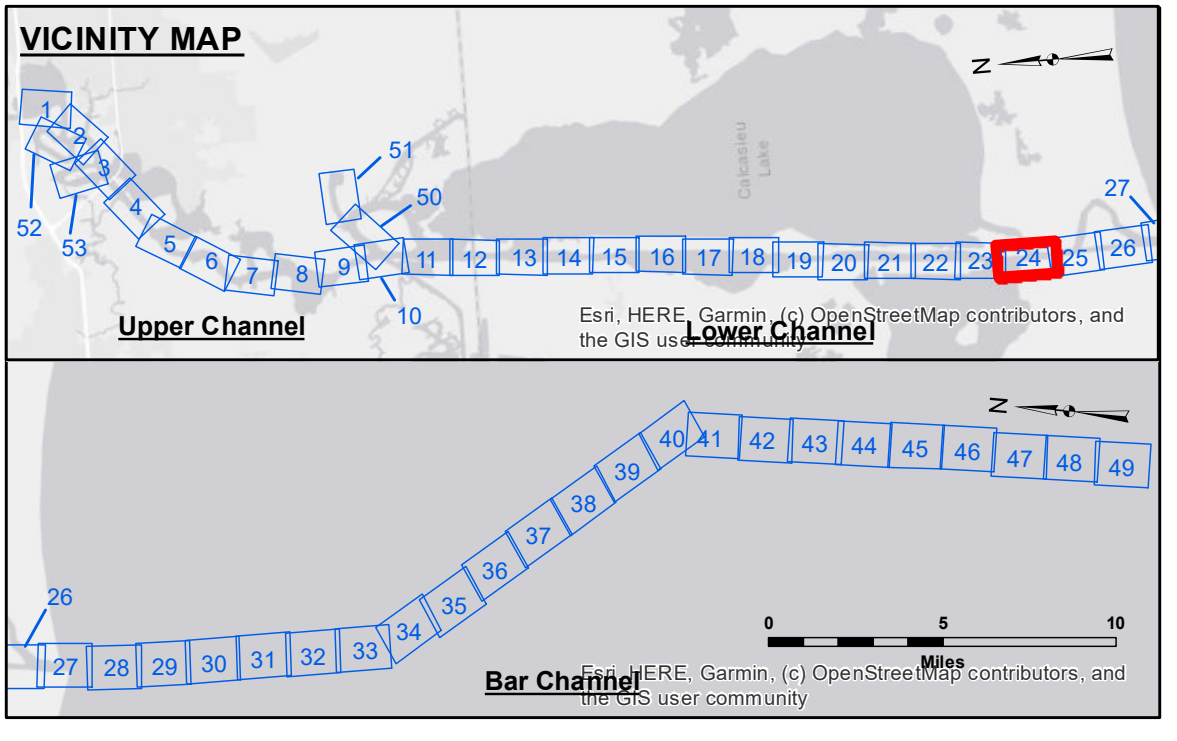
Accession: The United States Government furnishes these data and the recipient accepts and uses them with the express understanding that the data are not to be used for any purpose other than that for which they were originally prepared, or applied to any other project, or used in any way that would constitute a warranty, or imply any liability whatsoever to any person by reason of any use made hereof. These data, including the General and Particular Notes, are the property of the United States Government and are loaned to the recipient for their use only. The recipient may not transfer these data to others without also transferring this Disclaimer. The information depicted on this map represents the results of a survey conducted on or about the date indicated. It is not intended to represent the general condition existing at that time.

Accession: The data represent the results of data collection for a specific US Army Corps of Engineers project. The data are not to be used for any purpose other than that for which they were originally prepared, or applied to any other project, or used in any way that would constitute a warranty, or imply any liability whatsoever to any person by reason of any use made hereof. These data, including the General and Particular Notes, are the property of the United States Government and are loaned to the recipient for their use only. The recipient may not transfer these data to others without also transferring this Disclaimer. The information depicted on this map represents the results of a survey conducted on or about the date indicated. It is not intended to represent the general condition existing at that time.

U.S. ARMY CORPS OF ENGINEERS NEW ORLEANS DISTRICT	
Submitted:	RYLAND/ADAMS
Recommended:	BD
Checked By:	AC

**CALCASIEU SHIP CHANNEL
LOWER SHEET 24
CR_24_LWR_20200831_CS_POSTSTORM
31 August 2020**

**Sheet Reference Number
24 of 53**



LEGEND	
--- Federal Navigation Channel	○ Cable Area
— Federal Navigation Center Line	□ Placement Area
— As-built Pipeline/Cable	□ Anchorage Area
..... Unconfirmed Pipeline/Cable	⊗ Obstruction Point
— Project Depth Contour	★ Wrecks-Submerged
3 Fluff Thickness (feet)*	★ Beacon, General
● Shoalest Sounding**	◆ Red Navigation Buoy
◆ Green Navigation Buoy	

■ -16' and above
■ -16' to -21'
■ -21' to -26'
■ -26' to -33'
■ -33' to -39'
■ -39' to -41'
■ -41' to -43'
■ -43' and below

Gage Reading: DM 72: 2.60 MLLW
 Sea Conditions: CALM
 Vessel Name: M/V VALENTOUR
 Survey Type: CONDITION
 Sounding Frequency***: LOW

Vertical Datum:
 Soundings are shown in feet and indicate depths below Mean Lower Low Water Datum (MLLW).
 Datum Relationships for gage 73625 as of December 2013:
 0.0' NAVD88 (2009.55) = 1.2' MLLW = 2.2' MLG or 0.0' MLLW = 1.0' MLG

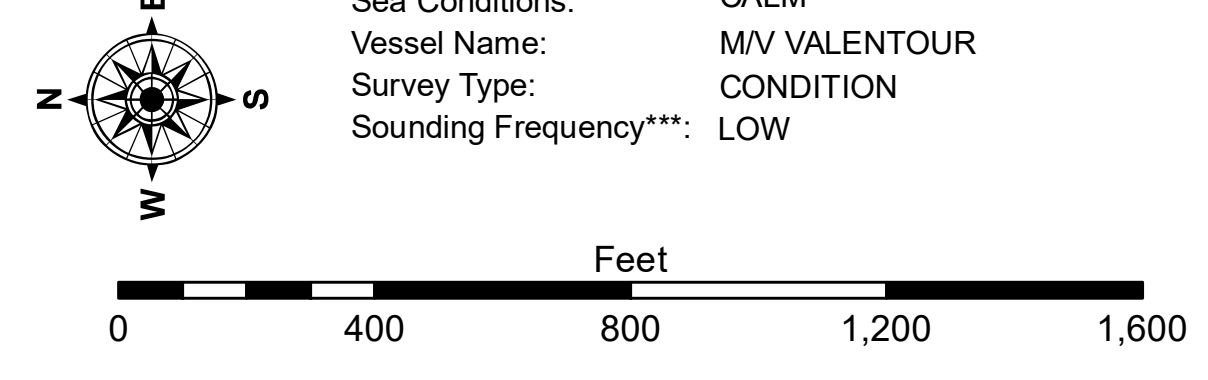
Distances on the Calcasieu River are shown at 1 mile intervals.

The location of navigation aids are base on and provided by the U.S. Coast Guard and USACE survey crews.

2015 Aerial Photography data source: NAIP
 Reference is N.O.A.A. Navigation Chart No. 11339.

* Difference between high and low frequency elevations where greater than 1.0'.
 ** Shoalest Sounding per Quarter per Reach.

*** High frequency (200 kHz) survey data represents the first signal return at a sounding location and will include suspended solids, known as "fluff", if present. Low frequency (20 kHz) survey data normally penetrates through this "fluff" layer to depict elevations of consolidated bottom material. Low frequency accuracies may vary depending on channel conditions and fathometer settings.



NOTES:
 Horizontal Coordinate System:
 North American Datum of 1983 (NAD83), projected to the State Plane Coordinate System (SPCS), Louisiana South Zone. Distance units in U.S. Survey Feet.

Vertical Datum:
 Soundings are shown in feet and indicate depths below Mean Lower Low Water Datum (MLLW).
 Datum Relationships for gage 73625 as of December 2013:
 0.0' NAVD88 (2009.55) = 1.2' MLLW = 2.2' MLG or 0.0' MLLW = 1.0' MLG

Distances on the Calcasieu River are shown at 1 mile intervals.

The location of navigation aids are base on and provided by the U.S. Coast Guard and USACE survey crews.

2015 Aerial Photography data source: NAIP
 Reference is N.O.A.A. Navigation Chart No. 11339.

* Difference between high and low frequency elevations where greater than 1.0'.
 ** Shoalest Sounding per Quarter per Reach.

*** High frequency (200 kHz) survey data represents the first signal return at a sounding location and will include suspended solids, known as "fluff", if present. Low frequency (20 kHz) survey data normally penetrates through this "fluff" layer to depict elevations of consolidated bottom material. Low frequency accuracies may vary depending on channel conditions and fathometer settings.