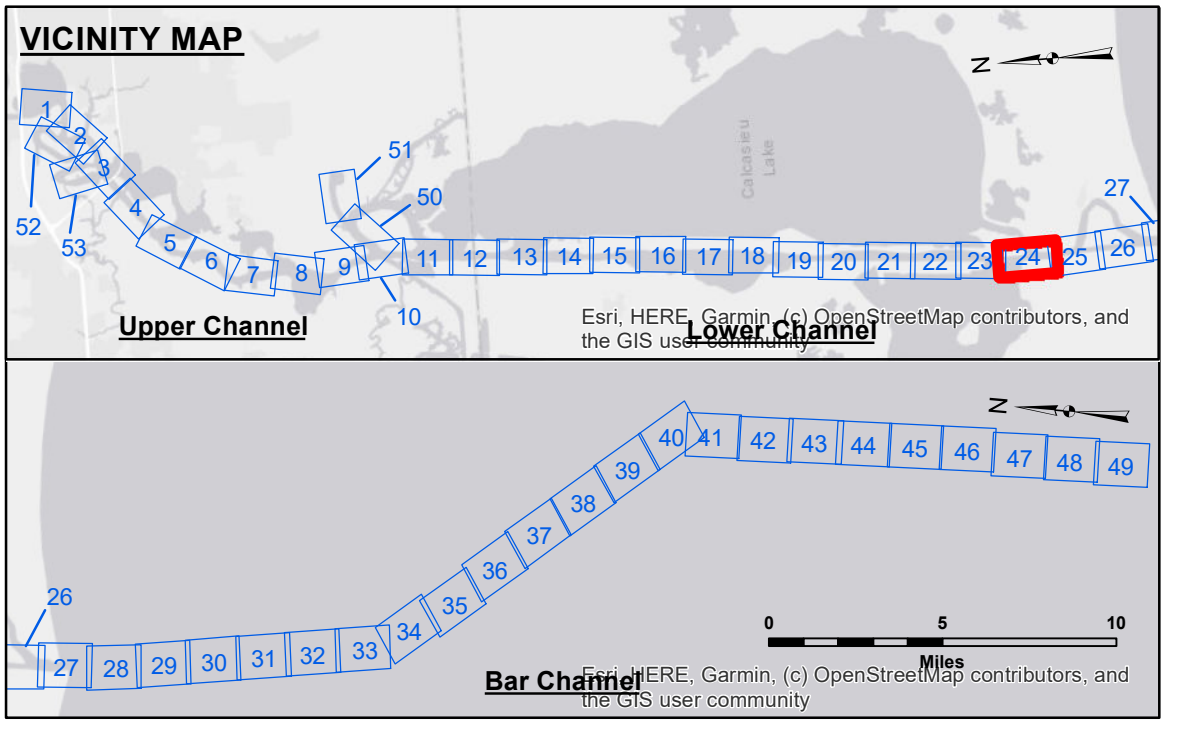


**DISCLAIMER**  
 The United States Government furnishes these data and the recipient accepts and uses them with the express understanding that the data are not to be used for any purpose other than that for which they were originally collected, and that the user is responsible for the results of any use of the data for other than the intended purpose.  
 Data Constants: Hydrographic survey data is subject to change rapidly due to several factors including, but not limited to, dredging, accretion, and other channel changes. The recipient may not transfer these data to others without also transferring this Disclaimer.  
 The information depicted on this map represents the results of a survey conducted on or about the date of the survey. It is not intended to represent the general condition existing at that time.

U.S. ARMY CORPS OF ENGINEERS NEW ORLEANS DISTRICT		
Submitted:	Surveyed By: SP-JS	Plotted By: BD
Recommended:	Chart, Survey Section	Checked By: AD/JH
Approved:	Chart, Waterways Maintenance Section	

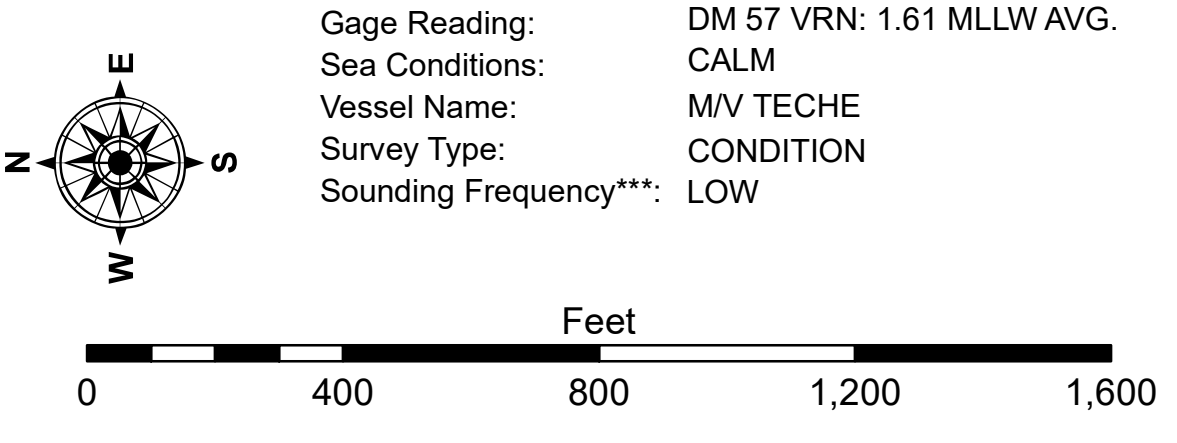
**CALCASIEU SHIP CHANNEL  
 LOWER SHEET 24  
 CR\_24\_LWR\_20241112\_CS  
 12 November 2024**

**Sheet Reference Number  
 24 of 53**



**LEGEND**

--- Federal Navigation Channel	○ Cable Area	3 Fluff Thickness (feet)*	■ -16' and above
— Federal Navigation Center Line	□ Placement Area	● Shoalest Sounding**	■ -16' to -21'
— As-built Pipeline/Cable	□ Anchorage Area	★ Beacon, General	■ -21' to -26'
..... Unconfirmed Pipeline/Cable	⊗ Obstruction Point	◆ Red Navigation Buoy	■ -26' to -33'
— Project Depth Contour	✈ Wrecks-Submerged	◆ Green Navigation Buoy	■ -33' to -39'
			■ -39' to -41'
			■ -41' to -43'
			■ -43' and below



**NOTES:**  
 Horizontal Coordinate System:  
 North American Datum of 1983 (NAD83), projected to the State Plane Coordinate System (SPCS), Louisiana South Zone. Distance units in U.S. Survey Feet.

Vertical Datum:  
 Soundings are shown in feet and indicate depths below Mean Lower Low Water Datum (MLLW).  
 Datum Relationships for gage 73625 as of December 2013:  
 0.0' NAVD83 (2009.55) = 1.2' MLLW = 2.2' MLG or 0.0' MLLW = 1.0' MLG

Distances on the Calcasieu River are shown at 1 mile intervals.

The location of navigation aids are base on and provided by the U.S. Coast Guard and USACE survey crews.

2022 Aerial Photography data source: PAR LLC  
 Reference is N.O.A. Navigation Chart No. 11339.

\* Difference between high and low frequency elevations where greater than 1.0'.  
 \*\* Shoalest Sounding per Quarter per Reach.  
 \*\*\* High frequency (200 kHz) survey data represents the first signal return at a sounding location and will include suspended solids, known as "fluff", if present. Low frequency (20 kHz) survey data normally penetrates through this "fluff" layer to depict elevations of consolidated bottom material. Low frequency accuracies may vary depending on channel conditions and fathometer settings.