

**Accession:** The United States Government furnishes these data and the recipient accepts and uses them with the express understanding that the data are not to be used for any purpose other than that for which they were originally collected, and that the user is responsible for the results of any use of the data for other than its intended purpose.

**Disclaimer:** Hydrographic survey data is subject to change rapidly due to several factors including but not limited to dredging, sedimentation, and changes in the bathymetry of the channel. The user is responsible for the results of any use of the data for other than its intended purpose.

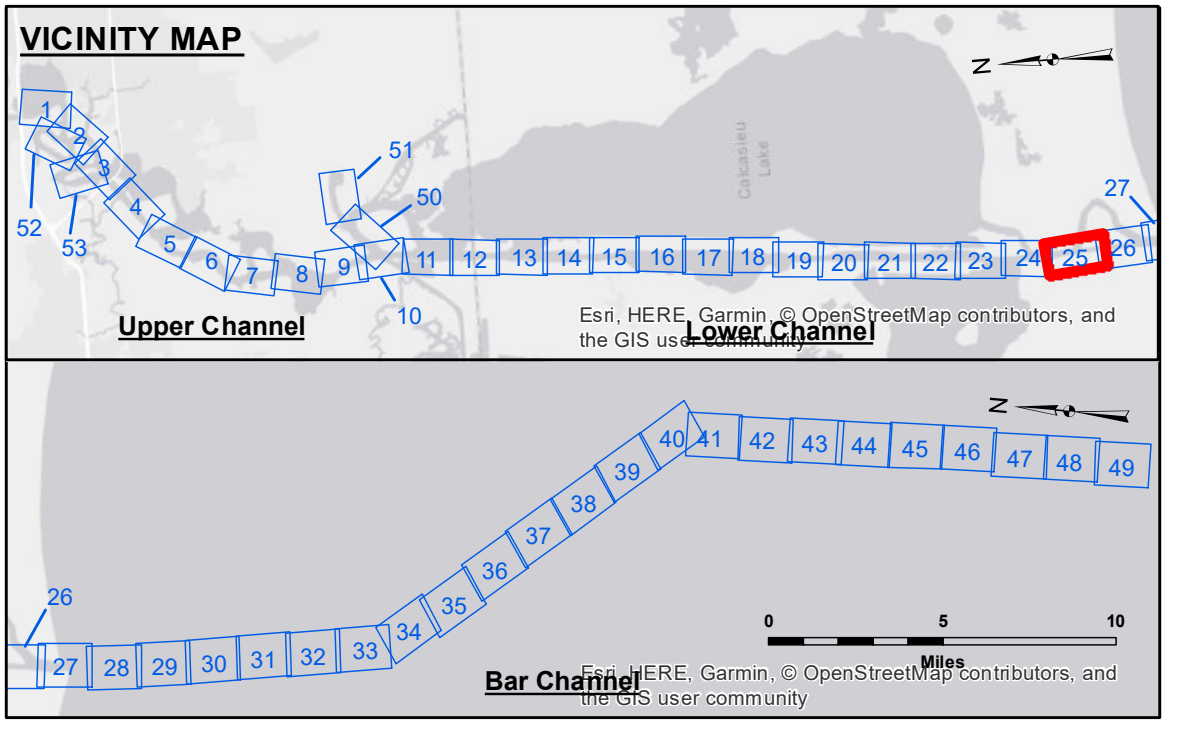
**Liability:** The data represent the results of data collection sponsored by a specific US Army Corps of Engineers District. The data are not to be used for any purpose other than that for which they were originally collected, and that the user is responsible for the results of any use of the data for other than its intended purpose.

Submitted:	SR, JH
Recommended:	BD
Checked By:	AC

U.S. ARMY CORPS OF ENGINEERS  
NEW ORLEANS DISTRICT

**CALCASIEU SHIP CHANNEL**  
**GAP SHEET 25**  
**CR\_25\_GAP\_20180125\_CS**  
**25 January 2018**

**Sheet Reference Number**  
**25 of 53**



**LEGEND**

- Federal Navigation Channel
- Federal Navigation Center Line
- As-built Pipeline/Cable
- ..... Unconfirmed Pipeline/Cable
- Project Depth Contour
- Cable Area
- Placement Area
- ⊗ Obstruction Point
- ✈ Wrecks-Submerged
- 3 Fluff Thickness (feet)\*
- Shoalest Sounding\*\*
- ★ Beacon, General
- ◆ Red Navigation Buoy
- ◆ Green Navigation Buoy
- 16' and above
- 16' to -21'
- 21' to -26'
- 26' to -33'
- 33' to -39'
- 39' to -41'
- 41' to -43'
- 43' and below

Gage Reading: CAMERON: 1.27 MLLW  
Sea Conditions: CALM  
Vessel Name: M/V TECHE  
Survey Type: CONDITION  
Sounding Frequency\*\*\*: LOW

Feet  
0 400 800 1,200 1,600

**NOTES:**  
Horizontal Coordinate System: North American Datum of 1983 (NAD83), projected to the State Plane Coordinate System (SPCS), Louisiana South Zone. Distance units in U.S. Survey Feet.  
Vertical Datum: Soundings are shown in feet and indicate depths below Mean Lower Low Water Datum (MLLW). Datum Relationships for gage 73650 as of December 2013: 0.0' NAVD83 (2009.55) = 1.3' MLLW = 2.3' MLG or 0.0' MLLW = 1.0' MLG  
Distances on the Calcasieu River are shown at 1 mile intervals.  
The location of navigation aids are base on and provided by the U.S. Coast Guard and USACE survey crews.  
2015 Aerial Photography data source: NAIP  
Reference is N.O.A. Navigation Chart No. 11339.  
\* Difference between high and low frequency elevations where greater than 1.0'.  
\*\* Shoalest Sounding per Quarter per Reach.  
\*\*\* High frequency (200 kHz) survey data represents the first signal return at a sounding location and will include suspended solids, known as "fluff", if present. Low frequency (20 kHz) survey data normally penetrates through this "fluff" layer to depict elevations of consolidated bottom material. Low frequency accuracies may vary depending on channel conditions and fathometer settings.