

Accession Number: 20180918_CS

Accession Date: 18 September 2018

Accession Title: CALCASIEU SHIP CHANNEL GAP SHEET 25

Accession Author: CR_25_GAP_20180918_CS

Accession Subject: Navigation Aids

Accession Keywords: Calcasieu Ship Channel, Navigation Aids, Bathymetry

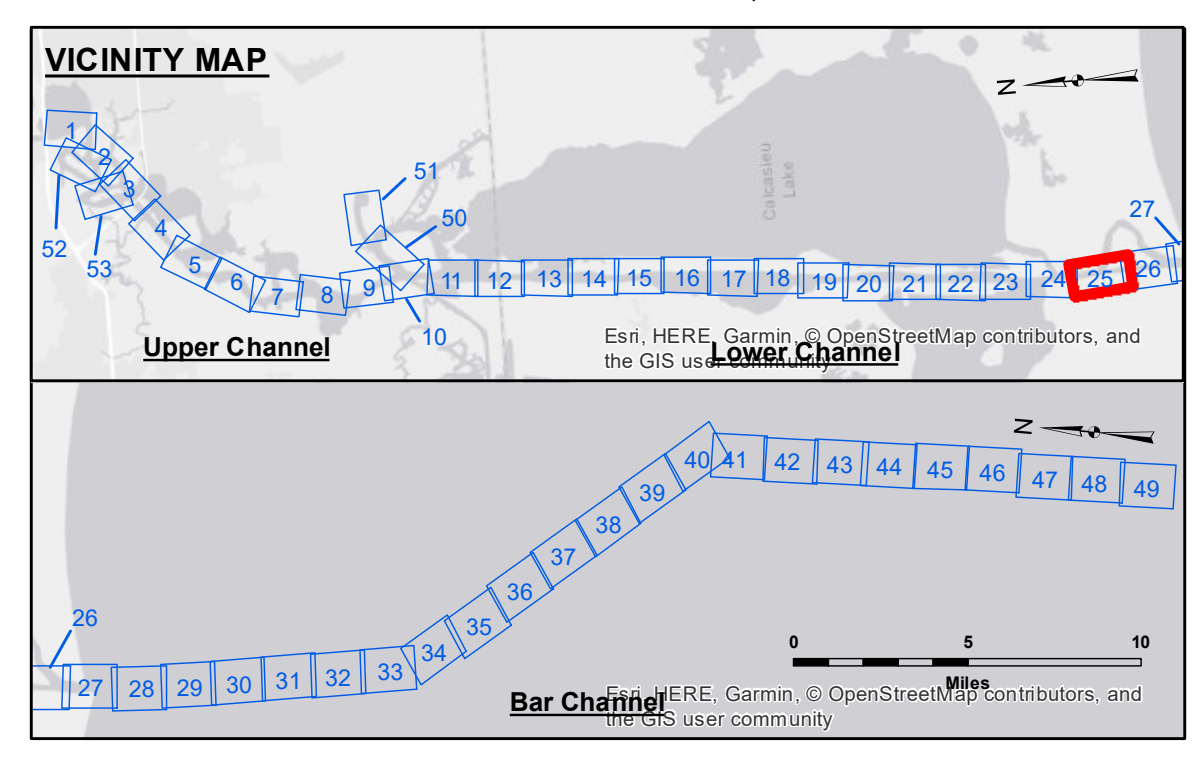
Accession Notes: This map represents the results of a hydrographic survey conducted in the Calcasieu River, Louisiana. The data was collected using a dual frequency (200 kHz) echosounder and a GNSS receiver. The survey was conducted under the supervision of the District Engineer, New Orleans District. The map is intended for use as a reference for navigation and is not to be used for any other purpose. The user is responsible for the accuracy of the data and its use. The user is also responsible for the accuracy of the data and its use. The user is also responsible for the accuracy of the data and its use.

Submitted:	Surveyed By: DS, JH
Recommended:	Plotted By: PLOTTER
Approved:	Checked By: CHECKED_BY

U.S. ARMY CORPS OF ENGINEERS
NEW ORLEANS DISTRICT

Chief, Waterways Maintenance Section

CALCASIEU SHIP CHANNEL
GAP SHEET 25
CR_25_GAP_20180918_CS
18 September 2018



LEGEND	
--- Federal Navigation Channel	○ Cable Area
— Federal Navigation Center Line	□ Placement Area
— As-built Pipeline/Cable	□ Anchorage Area
..... Unconfirmed Pipeline/Cable	⊗ Obstruction Point
— Project Depth Contour	⚓ Wrecks-Submerged
3 Fluff Thickness (feet)*	★ Beacon, General
● Shoalest Sounding**	♦ Red Navigation Buoy
★ Beacon, General	♦ Green Navigation Buoy

Gage Reading: CAMERON: 2.1 MLLW
Sea Conditions: CALM
Vessel Name: OB-167
Survey Type: CONDITION
Sounding Frequency*:** LOW

Vertical Datum: North American Datum of 1983 (NAD83), projected to the State Plane Coordinate System (SPCS), Louisiana South Zone. Distance units in U.S. Survey Feet.

Horizontal Datum: North American Datum of 1983 (NAD83), projected to the State Plane Coordinate System (SPCS), Louisiana South Zone. Distance units in U.S. Survey Feet.

Soundings: Soundings are shown in feet and indicate depths below Mean Lower Low Water Datum (MLLW). Datum Relationships for gage 73650 as of December 2013: 0.0' NAVD83 (2009.55) = 1.3' MLLW = 2.3' MLG or 0.0' MLLW = 1.0' MLG

Distances: Distances on the Calcasieu River are shown at 1 mile intervals.

Navigation Aids: The location of navigation aids are based on and provided by the U.S. Coast Guard and USACE survey crews.

Data Source: 2015 Aerial Photography data source: NAIP
 Reference is N.O.A.A. Navigation Chart No. 11339.

Notes:
 * Difference between high and low frequency elevations where greater than 1.0'.
 ** Shoalest Sounding per Quarter per Reach.
 *** High frequency (200 kHz) survey data represents the first signal return at a sounding location and will include suspended solids, known as "fluff", if present. Low frequency (20 kHz) survey data normally penetrates through this "fluff" layer to depict elevations of consolidated bottom material. Low frequency accuracies may vary depending on channel conditions and fathometer settings.

Sheet Reference Number
25 of 53

Revision Number:
3.13-20160811