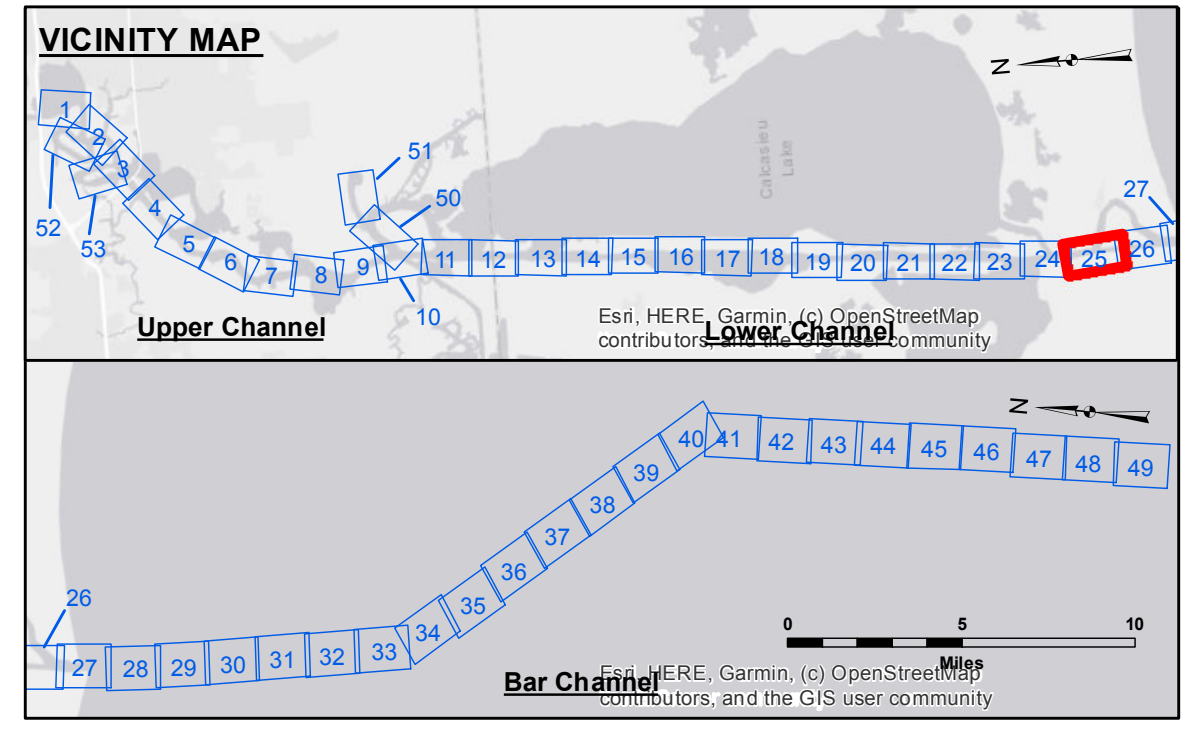


DISCLAIMER
 The United States Government furnishes these data and the recipient accepts and uses them with the express understanding that the Government makes no warranty, expressed or implied, concerning the accuracy, completeness, reliability, usability, or suitability for any particular purpose of the information. The user is responsible for the results of any use of this information. Application of the data for other than its intended purpose is at the user's risk.
 Data: Constitutive Hydrographic survey data is subject to change rapidly due to several factors including but not limited to dredging, sedimentation, and other channel changes. The recipient may not transfer this data to others without also transferring the Disclaimer. The information depicted on this map represents the results of a hydrographic survey and is not intended to be used for navigation. The recipient is advised to verify the information and to exercise caution when using this information. The recipient is responsible for the results of any use of this information. The recipient is advised to exercise caution when using this information. The recipient is responsible for the results of any use of this information.

Submitted:	Surveyed By: DS/PS
Recommended: Chief Survey Section	Plotted By: JHT
Approved: Chief, Waterways Maintenance Section	Checked By: AC

**CALCASIEU SHIP CHANNEL
 GAP SHEET 25
 CR_25_GAP_20210720_CS
 20 July 2021**



LEGEND		Color Key	
--- Federal Navigation Channel	○ Cable Area	Red	-16' and above
— Federal Navigation Center Line	□ Placement Area	Orange	-16' to -21'
— As-built Pipeline/Cable	○ Anchorage Area	Yellow	-21' to -26'
..... Unconfirmed Pipeline/Cable	⊗ Obstruction Point	Light Green	-26' to -33'
— Project Depth Contour	⚓ Wrecks-Submerged	Light Blue	-33' to -39'
3 Fluff Thickness (feet)*	★ Beacon, General	Light Cyan	-39' to -41'
● Shoalest Sounding**	♦ Red Navigation Buoy	Dark Cyan	-41' to -43'
○ Green Navigation Buoy	♦ Green Navigation Buoy	Blue	-43' and below

Gage Reading: CAMERON: 1.9 MLLW
 Sea Conditions: SMOOTH
 Vessel Name: LAFOURCHE
 Survey Type: CS
 Sounding Frequency***: LOW

NOTES:
 Horizontal Coordinate System:
 North American Datum of 1983 (NAD83), projected to the State Plane Coordinate System (SPCS), Louisiana South Zone. Distance units in U.S. Survey Feet.
 Vertical Datum:
 Soundings are shown in feet and indicate depths below Mean Lower Low Water Datum (MLLW).
 Datum Relationships for gage 73650 as of December 2013:
 0.0' NAVD83 (2009.55) = 1.3' MLLW = 2.3' MLG or 0.0' MLLW = 1.0' MLG
 Distances on the Calcasieu River are shown at 1 mile intervals.
 The location of navigation aids are based on and provided by the U.S. Coast Guard and USACE survey crews.
 2015 Aerial Photography data source: NAIP
 Reference is N.O.A. Navigation Chart No. 11339.
 * Difference between high and low frequency elevations where greater than 1.0'.
 ** Shoalest Sounding per Quarter per Reach.
 *** High frequency (200 kHz) survey data represents the first signal return at a sounding location and will include suspended solids, known as "fluff", if present. Low frequency (20 kHz) survey data normally penetrates through this "fluff" layer to depict elevations of consolidated bottom material. Low frequency accuracies may vary depending on channel conditions and fathometer settings.

**Sheet Reference Number
 25 of 53**