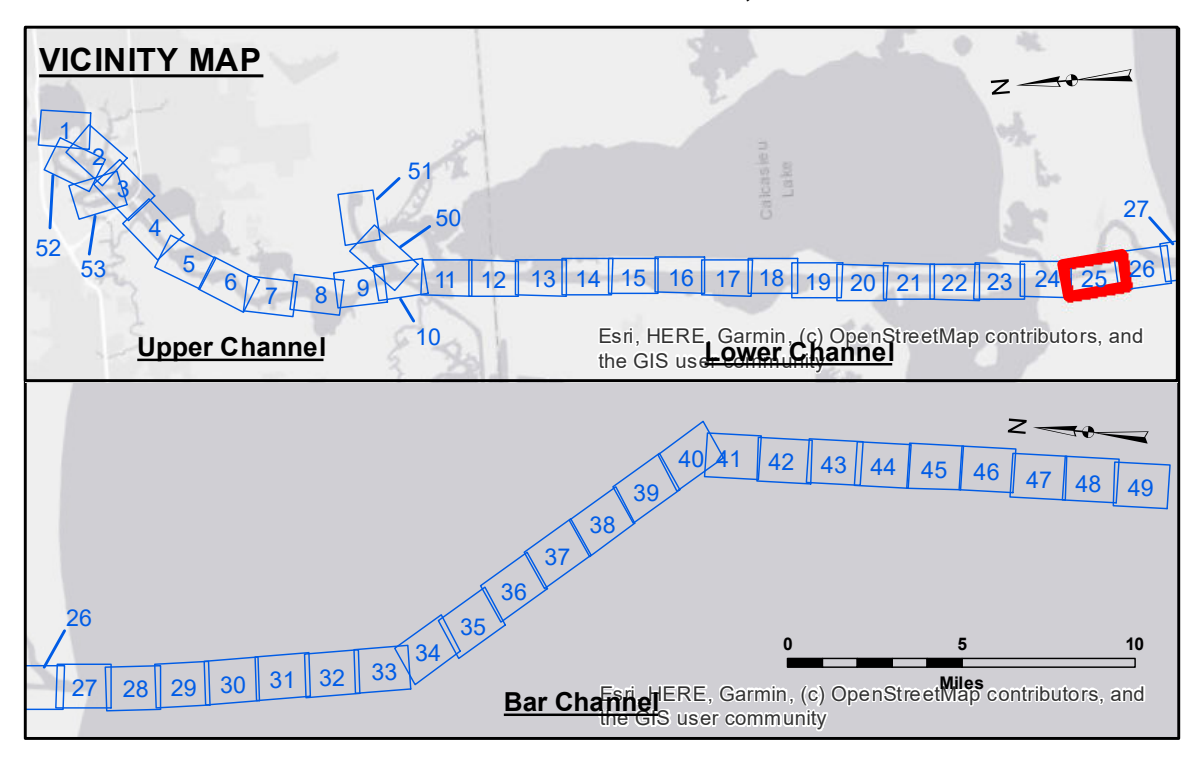


Accession: The United States Government furnishes these data and the recipient accepts and uses them with the express understanding that the data are not to be used for any purpose other than that for which they were originally prepared, or implied concerning the accuracy, completeness, reliability, usability or suitability for any particular purpose of the recipient. The user is responsible for the results of the application of the data for other than its intended purpose. No liability whatsoever is any person by reason of any use made hereof. These data are the property of the United States Government and are loaned to the recipient for use only for the purpose for which they were provided. The recipient may not transfer these data to any other person or organization without the express written consent of the United States Government. The information depicted on this map represents the results of a survey conducted by the United States Army Corps of Engineers and is not to be used for any purpose other than that for which it was prepared. The recipient is responsible for the results of the application of the data for other than its intended purpose. No liability whatsoever is any person by reason of any use made hereof. These data are the property of the United States Government and are loaned to the recipient for use only for the purpose for which they were provided. The recipient may not transfer these data to any other person or organization without the express written consent of the United States Government.

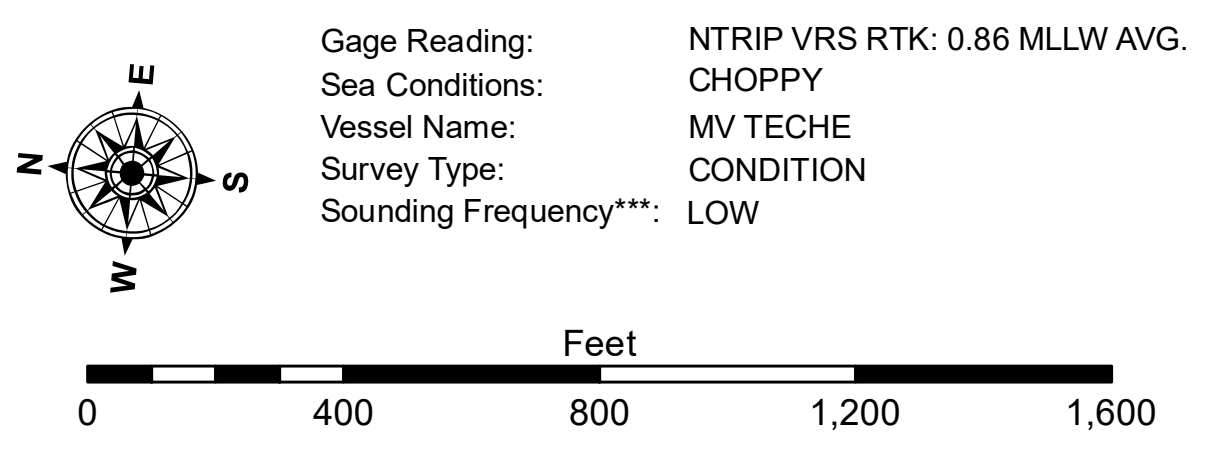
Submitted:	Surveyed By: SP/SK
Recommended:	Plotted By: BD
Approved:	Checked By: AD/JH

U.S. ARMY CORPS OF ENGINEERS
NEW ORLEANS DISTRICT

CALCASIEU SHIP CHANNEL
GAP SHEET 25
CR_25_GAP_20221206_CS
06 December 2022



LEGEND	
--- Federal Navigation Channel	● Cable Area
— Federal Navigation Center Line	□ Placement Area
— As-built Pipeline/Cable	□ Anchorage Area
..... Unconfirmed Pipeline/Cable	⊗ Obstruction Point
— Project Depth Contour	⚓ Wrecks-Submerged
3 Fluff Thickness (feet)*	★ Beacon, General
● Shoalest Sounding**	◆ Red Navigation Buoy
◆ Green Navigation Buoy	



NOTES:
Horizontal Coordinate System: North American Datum of 1983 (NAD83), projected to the State Plane Coordinate System (SPCS), Louisiana South Zone. Distance units in U.S. Survey Feet.
Vertical Datum: Soundings are shown in feet and indicate depths below Mean Lower Low Water Datum (MLLW). Datum Relationships for gage 73650 as of December 2013: 0.0' NAVD83 (2009.55) = 1.3' MLLW = 2.3' MLG or 0.0' MLLW = 1.0' MLG
Distances on the Calcasieu River are shown at 1 mile intervals.
The location of navigation aids are base on and provided by the U.S. Coast Guard and USACE survey crews.
2022 Aerial Photography data source: PAR LLC
Reference is N.O.A. Navigation Chart No. 11339.
* Difference between high and low frequency elevations where greater than 1.0'.
** Shoalest Sounding per Quarter per Reach.
*** High frequency (200 kHz) survey data represents the first signal return at a sounding location and will include suspended solids, known as "fluff", if present. Low frequency (20 kHz) survey data normally penetrates through this "fluff" layer to depict elevations of consolidated bottom material. Low frequency accuracies may vary depending on channel conditions and fathometer settings.

Sheet Reference Number
25 of 53
Revision Number:
4.2-202 (04/20)