

482,000 2,644,000

479,000

476,000

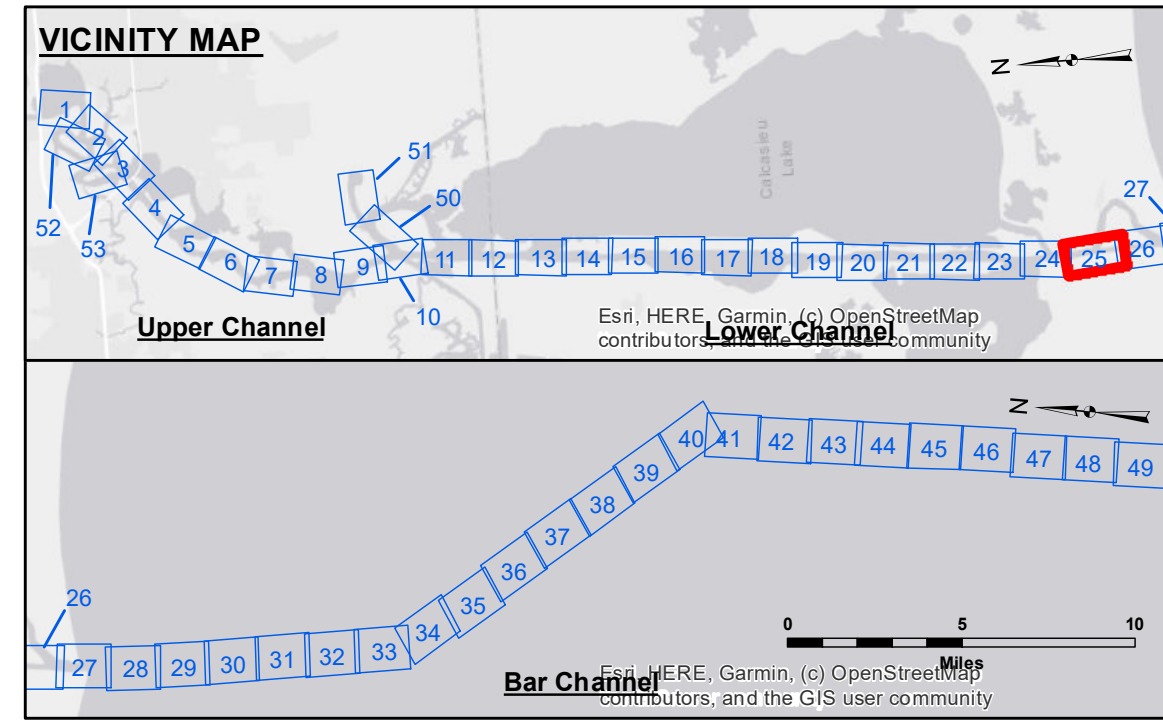
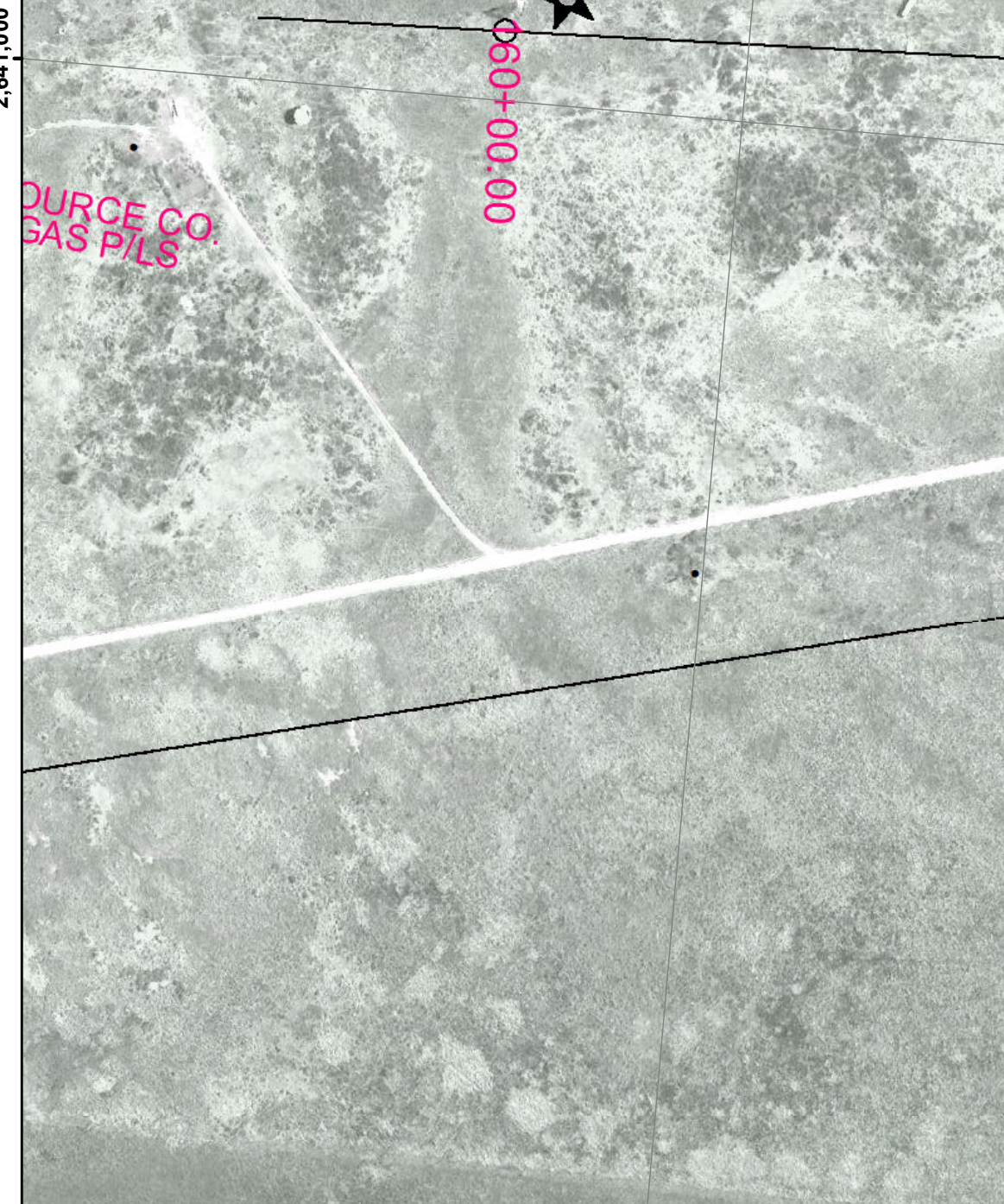


**Accession:** The United States Government furnishes these data and the recipient accepts and uses them with the express understanding that the data are not to be used for any purpose other than that for which they were originally prepared, and that the user is responsible for the results obtained therefrom. The user is responsible for the results obtained therefrom. The user is responsible for the results obtained therefrom. The user is responsible for the results obtained therefrom.

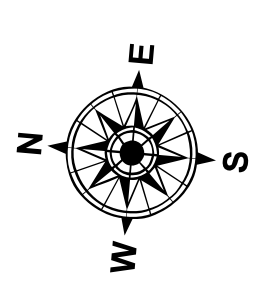
**Disclaimer:** The information depicted on this map represents the results of a survey conducted on or about the date shown on the map. The information is provided for informational purposes only and is not to be used for navigation or other purposes without the assistance of a qualified professional. The user is responsible for the results obtained therefrom.

Sheet 24

Sheet 26



LEGEND			
--- Federal Navigation Channel	○ Cable Area	3 Fluff Thickness (feet)*	-16' and above
— Federal Navigation Center Line	□ Placement Area	● Shoalest Sounding**	-16' to -21'
— As-built Pipeline/Cable	⊗ Anchorage Area	★ Beacon, General	-21' to -26'
..... Unconfirmed Pipeline/Cable	⊗ Obstruction Point	◆ Red Navigation Buoy	-26' to -33'
— Project Depth Contour	⚓ Wrecks-Submerged	◇ Green Navigation Buoy	-33' to -39'
			-39' to -41'
			-41' to -43'
			-43' and below



Gage Reading: CAMERON VRN: 0.22 MLLW AVG.  
 Sea Conditions: CHOPPY  
 Vessel Name: MV TECHE  
 Survey Type: CONDITION  
 Sounding Frequency\*\*\*: LOW

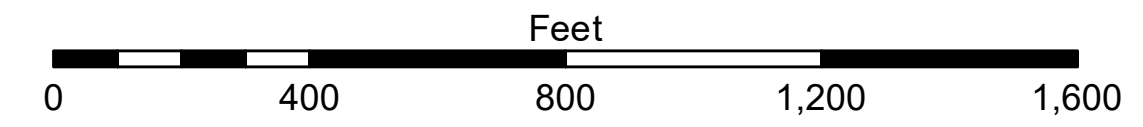
Vertical Datum:  
 Soundings are shown in feet and indicate depths below Mean Lower Low Water Datum (MLLW).  
 Datum Relationships for gage 73650 as of December 2013:  
 0.0' NAVD83 (2009.55) = 1.3' MLLW = 2.3' MLG or 0.0' MLLW = 1.0' MLG

Distances on the Calcasieu River are shown at 1 mile intervals.

The location of navigation aids are based on and provided by the U.S. Coast Guard and USACE survey crews.

2022 Aerial Photography data source: PAR LLC  
 Reference is N.O.A. Navigation Chart No. 11339.

\* Difference between high and low frequency elevations where greater than 1.0'.  
 \*\* Shoalest Sounding per Quarter per Reach.  
 \*\*\* High frequency (200 kHz) survey data represents the first signal return at a sounding location and will include suspended solids, known as "fluff", if present. Low frequency (20 kHz) survey data normally penetrates through this "fluff" layer to depict elevations of consolidated bottom material. Low frequency accuracies may vary depending on channel conditions and fathometer settings.



U.S. ARMY CORPS OF ENGINEERS NEW ORLEANS DISTRICT		
Submitted:	Surveyed By: SP-JS	Plotted By: BD
Recommended:	Checked By: AD/JH	Checked By: AD/JH
Approved:	Chief, Waterways Maintenance Section	

**CALCASIEU SHIP CHANNEL  
 GAP SHEET 25  
 CR\_25\_GAP\_20241114\_CS  
 14 November 2024**

**Sheet Reference Number  
 25 of 53**