

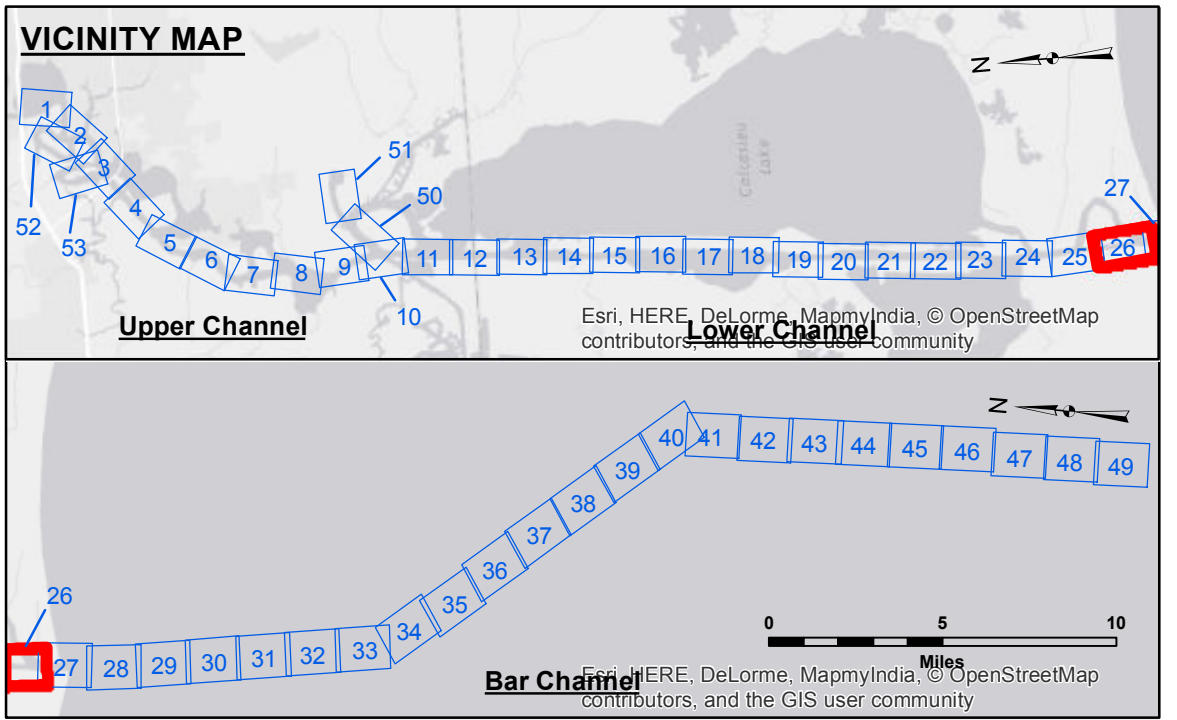
US Army Corps of Engineers District: CEMV

Access/Compliance: The United States Government furnishes these data and the recipient accepts and uses them with the express understanding that they are for informational purposes only. It is not to be used for any purpose other than that for which it was prepared. The user is responsible for the results of any use of these data. The Corps of Engineers does not warrant the accuracy, completeness, or reliability of the data for other than its intended purpose.

Data: Bathymetric survey data is subject to change due to several factors including but not limited to dredging, sedimentation, and changes in channel conditions. The Corps of Engineers does not accept responsibility for changes in the hydrographic conditions which develop after the date of the survey. Product maintainers should not rely solely upon it.

Submitted:	Surveyed By: SP-PM
Recommended: Chart, Survey Section	Plotted By: BTD
Approved: Chart, Waterways Maintenance Section	Checked By: TAF

CALCASIEU SHIP CHANNEL
GAP SHEET 26
CR_26_GAP_20150430
30 April 2015



LEGEND

--- Federal Navigation Channel	○ Cable Area	□ Borrow Area	■ -15' and above
— Federal Navigation Center Line	□ Placement Area	● Shoalest Sounding**	■ -15' to -20'
— As-built Pipeline/Cable	□ Anchorage Area	★ Beacon, General	■ -20' to -25'
..... Unconfirmed Pipeline/Cable	⊗ Obstruction Point	◆ Red Navigation Buoy	■ -25' to -32'
— Project Depth Contour	⚓ Wrecks-Submerged	◆ Green Navigation Buoy	■ -32' to -38'
			■ -38' to -40'
			■ -40' to -42'
			■ -42' and below

Gage Reading: CAMERON: 2.77 MLG
 Sea Conditions: CALM
 Vessel Name: OB-167
 Survey Type: CONDITION
 Sounding Frequency***: LOW

NOTES:
 Horizontal Coordinate System: North American Datum of 1983 (NAD83), projected to the State Plane Coordinate System (SPCS), Louisiana South Zone. Distance units in U.S. Survey Feet.
 Vertical Datum: Soundings are shown in feet and indicate depths below Mean Low Gulf Datum (MLG). Datum Relationships for gage 73650 as of December 2013: 0.0' NAVD88 (2009.55) = 1.3' MLLW = 2.3' MLG or 0.0' MLLW = 1.0' MLG
 Distances on the Calcasieu River are shown at 1 mile intervals.
 The location of navigation aids are base on and provided by the U.S. Coast Guard and USACE survey crews.
 2010 Aerial Photography data source: NAIP
 Reference is N.O.A.A. Navigation Chart No. 11339.
 ** Shoalest Sounding per Quarter per Reach.
 *** High frequency (200 kHz) survey data represents the first signal return at a sounding location and will include suspended solids, known as "fluff", if present. Low frequency (20 kHz) survey data normally penetrates through this "fluff" layer to depict elevations of consolidated bottom material. Low frequency accuracies may vary depending on channel conditions and fathometer settings.

Sheet Reference Number
26 of 53

Revision Number: 3.6.1-20140429