

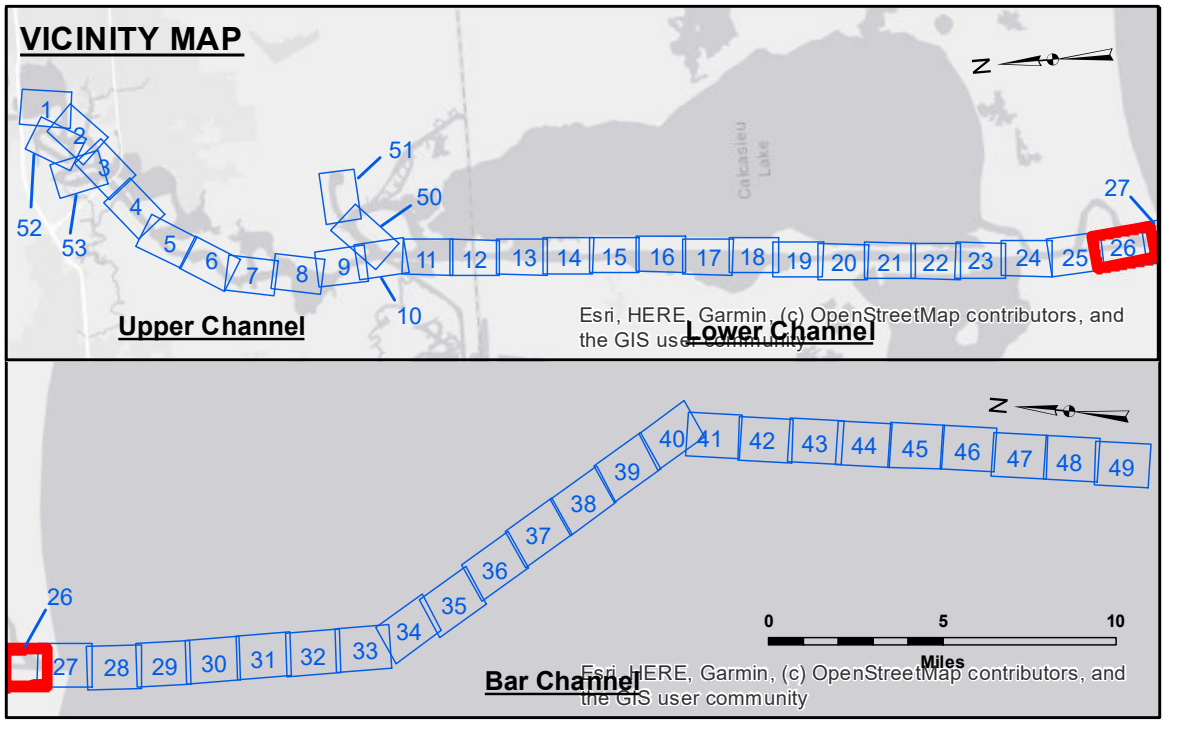
**DISCLAIMER**  
 The information depicted on this map represents the results of a survey conducted by the United States Army Corps of Engineers. The user is responsible for the accuracy, completeness, and reliability of the data for its intended use. The user is responsible for the results of any use of the data for other than its intended purpose. The user is responsible for the results of any use of the data for other than its intended purpose. The user is responsible for the results of any use of the data for other than its intended purpose. The user is responsible for the results of any use of the data for other than its intended purpose.

Submitted:	Surveyed By:	JDH/ADAMS
Recommended:	Plotted By:	BD
Approved:	Chief, Survey Section	AC

U.S. ARMY CORPS OF ENGINEERS  
 NEW ORLEANS DISTRICT

**CALCASIEU SHIP CHANNEL**  
**GAP SHEET 26**  
**CR\_26\_GAP\_20200615\_CS\_POSTSTORM**  
**15 June 2020**

**Sheet Reference Number**  
**26 of 53**



LEGEND		
--- Federal Navigation Channel	○ Cable Area	3 Fluff Thickness (feet)*
— Federal Navigation Center Line	□ Placement Area	● Shoalest Sounding**
— As-built Pipeline/Cable	⊗ Anchorage Area	☆ Beacon, General
..... Unconfirmed Pipeline/Cable	⊗ Obstruction Point	◆ Red Navigation Buoy
— Project Depth Contour	⊗ Wrecks-Submerged	◆ Green Navigation Buoy

**Gage Reading:** CAMERON: 2.34 MLLW AVG.  
**Sea Conditions:** 1'  
**Vessel Name:** M/V VALENTOUR  
**Survey Type:** CONDITION  
**Sounding Frequency\*\*\*:** LOW

**Vertical Datum:**  
 Soundings are shown in feet and indicate depths below Mean Lower Low Water Datum (MLLW).  
 Datum Relationships for gage 73650 as of December 2013:  
 0.0' NAVD88 (2009.55) = 1.3' MLLW = 2.3' MLG or 0.0' MLLW = 1.0' MLG

Distances on the Calcasieu River are shown at 1 mile intervals.

The location of navigation aids are base on and provided by the U.S. Coast Guard and USACE survey crews.

2015 Aerial Photography data source: NAIP  
 Reference is N.O.A.A. Navigation Chart No. 11339.  
 \* Difference between high and low frequency elevations where greater than 1.0'.  
 \*\* Shoalest Sounding per Quarter per Reach.  
 \*\*\* High frequency (200 kHz) survey data represents the first signal return at a sounding location and will include suspended solids, known as "fluff", if present. Low frequency (20 kHz) survey data normally penetrates through this "fluff" layer to depict elevations of consolidated bottom material. Low frequency accuracies may vary depending on channel conditions and fathometer settings.

**NOTES:**  
 Horizontal Coordinate System:  
 North American Datum of 1983 (NAD83), projected to the State Plane Coordinate System (SPCS), Louisiana South Zone. Distance units in U.S. Survey Feet.