

DISCLAIMER

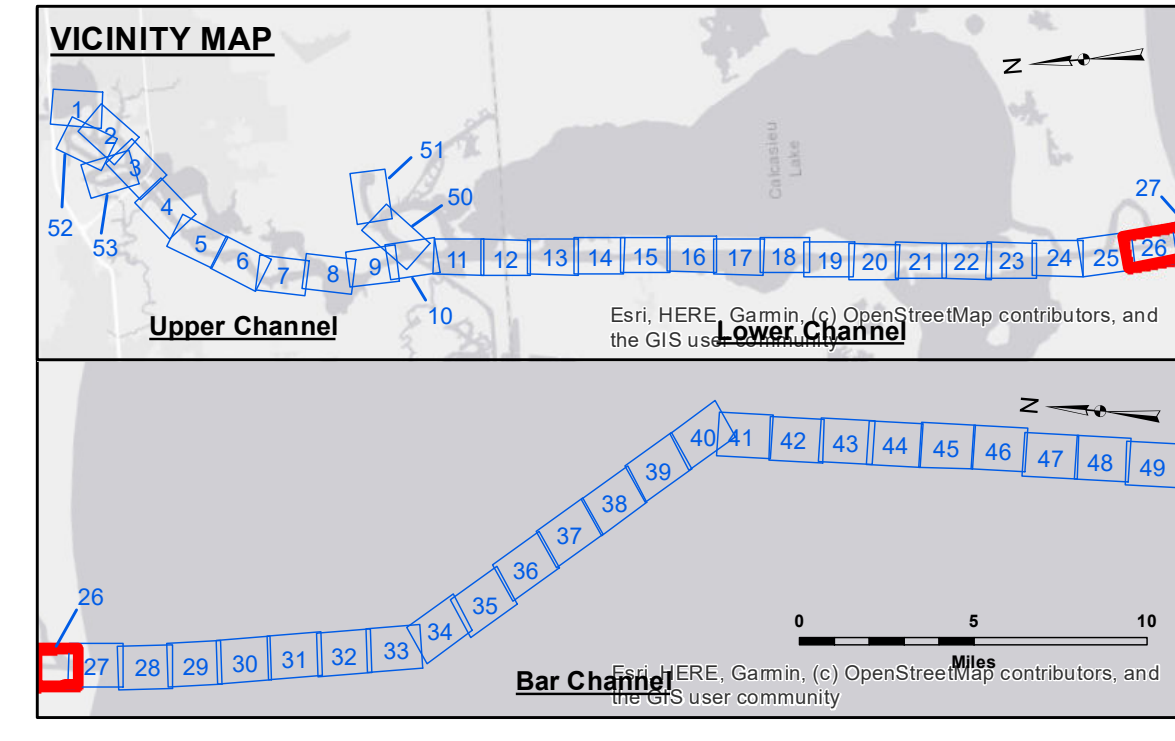
The United States Government furnishes these data and the recipient accepts and uses them with the express understanding that the data are provided "AS IS" and that the Corps of Engineers makes no warranty, expressed or implied, regarding the accuracy, completeness, reliability, usability, or suitability for any particular purpose of the data. The user is responsible for the results obtained from the use of the data. The Corps of Engineers is not liable for any damage or injury resulting from the use of the data for purposes not intended by the Corps of Engineers. The Corps of Engineers is not responsible for any damage or injury resulting from the use of the data for purposes not intended by the Corps of Engineers. The Corps of Engineers is not responsible for any damage or injury resulting from the use of the data for purposes not intended by the Corps of Engineers.

U.S. ARMY CORPS OF ENGINEERS NEW ORLEANS DISTRICT	
Submitted:	RYLAND/ADAMS
Recommended:	AO
Approved:	AC

CALCASIEU SHIP CHANNEL
GAP SHEET 26
CR_26_GAP_20200831_CS_POSTSTORM
31 August 2020

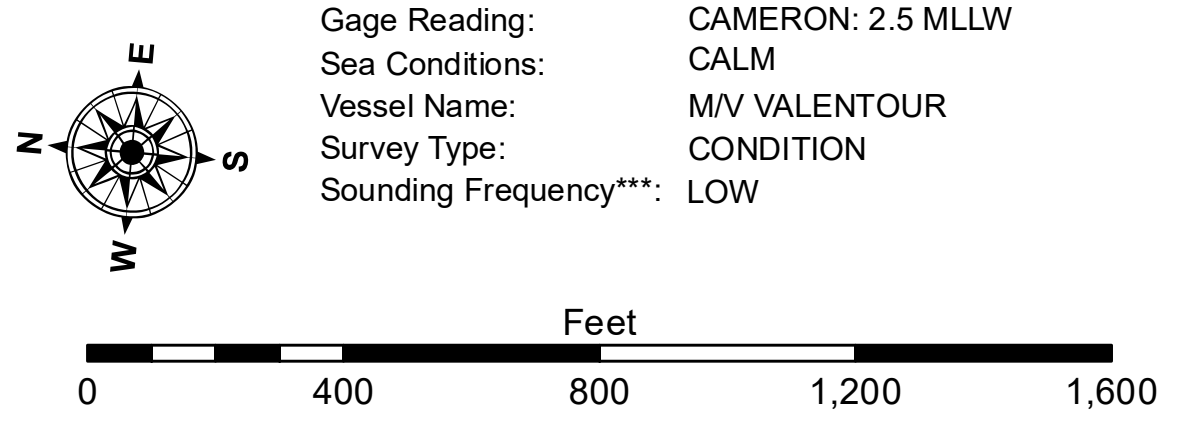
Sheet Reference Number
26 of 53

Revision Number:
 4.1-2019105



LEGEND

- - - Federal Navigation Channel	○ Cable Area	3 Fluff Thickness (feet)*	-16' and above
- Federal Navigation Center Line	□ Placement Area	● Shoalest Sounding**	-16' to -21'
- - - As-built Pipeline/Cable	⊗ Anchorage Area	☆ Beacon, General	-21' to -26'
⋯ Unconfirmed Pipeline/Cable	⊗ Obstruction Point	♦ Red Navigation Buoy	-26' to -33'
- Project Depth Contour	⊗ Wrecks-Submerged	◆ Green Navigation Buoy	-33' to -39'
			-39' to -41'
			-41' to -43'
			-43' and below



NOTES:

Horizontal Coordinate System:
 North American Datum of 1983 (NAD83), projected to the State Plane Coordinate System (SPCS), Louisiana South Zone. Distance units in U.S. Survey Feet.

Vertical Datum:
 Soundings are shown in feet and indicate depths below Mean Lower Low Water Datum (MLLW).
 Datum Relationships for gage 73650 as of December 2013:
 0.0' NAVD88 (2009.55) = 1.3' MLLW = 2.3' MLG or 0.0' MLLW = 1.0' MLG

Distances on the Calcasieu River are shown at 1 mile intervals.

The location of navigation aids are based on and provided by the U.S. Coast Guard and USACE survey crews.

2015 Aerial Photography data source: NAIP
 Reference is N.O.A.A. Navigation Chart No. 11339.

* Difference between high and low frequency elevations where greater than 1.0'.
 ** Shoalest Sounding per Quarter per Reach.
 *** High frequency (200 kHz) survey data represents the first signal return at a sounding location and will include suspended solids, known as "fluff", if present. Low frequency (20 kHz) survey data normally penetrates through this "fluff" layer to depict elevations of consolidated bottom material. Low frequency accuracies may vary depending on channel conditions and fathometer settings.