

US Army Corps of Engineers District: CEMVN

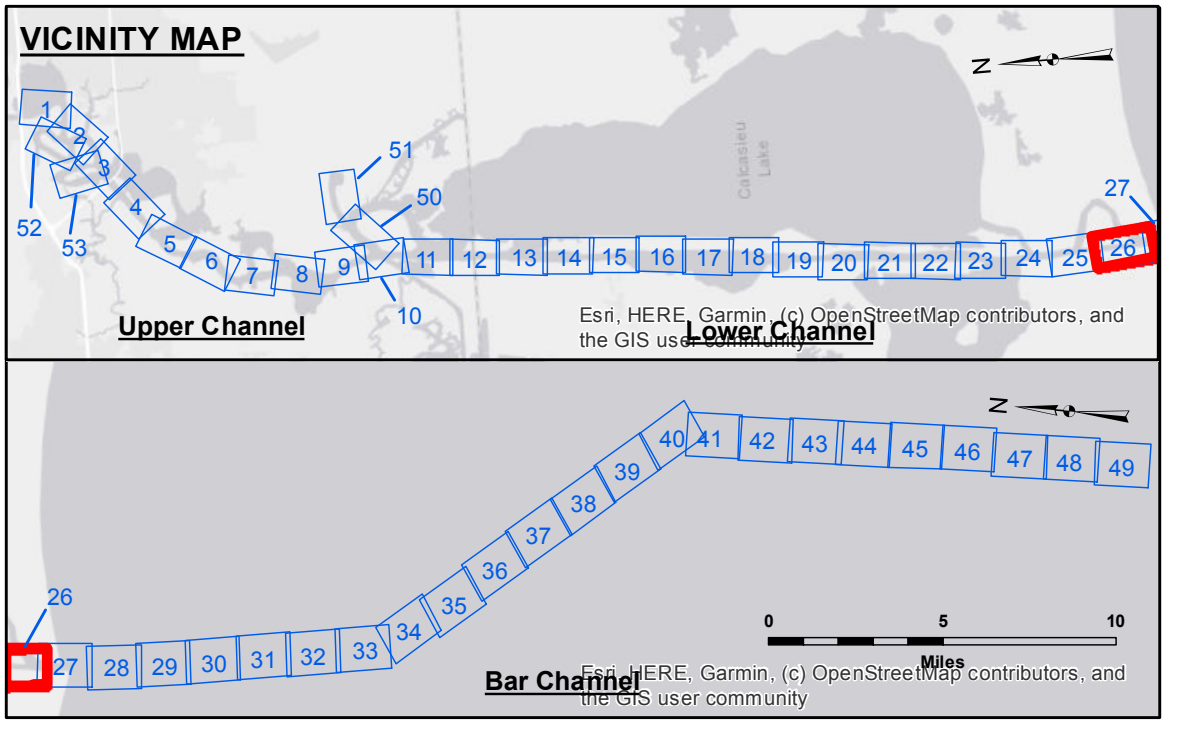
Access/Use: The United States Government furnishes these data and the recipient accepts and uses them with the express understanding that the data are not to be used for any purpose other than that for which they were originally collected, and that the user is responsible for the results of any use of the data. The user is responsible for the results of any use of the data. The user is responsible for the results of any use of the data. The user is responsible for the results of any use of the data.

Distribution Liability: The data represent the results of data collection/processing for a specific US Army Corps of Engineers project. The data are not to be used for any purpose other than that for which they were originally collected, and that the user is responsible for the results of any use of the data. The user is responsible for the results of any use of the data. The user is responsible for the results of any use of the data.

U.S. ARMY CORPS OF ENGINEERS NEW ORLEANS DISTRICT	
Submitted By: RYLAND/DAMIS	Plotted By: AO
Recommended By: Chart Survey Section	Checked By: AO
Approved By:	Chief, Waterways Maintenance Section

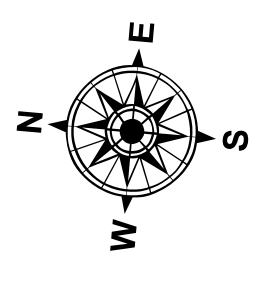
**CALCASIEU SHIP CHANNEL
GAP SHEET 26
CR_26_GAP_20200912_CS
12 September 2020**

**Sheet Reference Number
26 of 53**

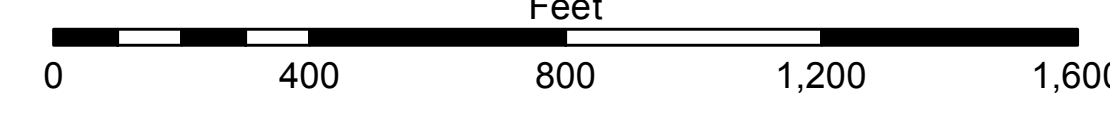


LEGEND	
--- Federal Navigation Channel	○ Cable Area
— Federal Navigation Center Line	□ Placement Area
— As-built Pipeline/Cable	□ Anchorage Area
..... Unconfirmed Pipeline/Cable	⊗ Obstruction Point
— Project Depth Contour	⚓ Wrecks-Submerged
3 Fluff Thickness (feet)*	★ Beacon, General
● Shoalest Sounding**	◆ Red Navigation Buoy
◆ Green Navigation Buoy	

■ -16' and above
■ -16' to -21'
■ -21' to -26'
■ -26' to -33'
■ -33' to -39'
■ -39' to -41'
■ -41' to -43'
■ -43' and below



Gage Reading: CAMERON: 2.3 MLLW AVG
 Sea Conditions: CALM
 Vessel Name: M/V VALENTOUR
 Survey Type: CONDITION
 Sounding Frequency***: LOW



NOTES:

Horizontal Coordinate System:
 North American Datum of 1983 (NAD83), projected to the State Plane
 Coordinate System (SPCS), Louisiana South Zone. Distance units in U.S. Survey Feet.

Vertical Datum:
 Soundings are shown in feet and indicate depths below Mean Lower Low Water Datum (MLLW).
 Datum Relationships for gage 73650 as of December 2013:
 0.0' NAVD88 (2009.55) = 1.3' MLLW = 2.3' MLG or 0.0' MLLW = 1.0' MLG

Distances on the Calcasieu River are shown at 1 mile intervals.

The location of navigation aids are base on and provided by the U.S. Coast Guard and USACE survey crews.

2015 Aerial Photography data source: NAIP
 Reference is N.O.A.A. Navigation Chart No. 11339.

* Difference between high and low frequency elevations where greater than 1.0'.
 ** Shoalest Sounding per Quarter per Reach.
 *** High frequency (200 kHz) survey data represents the first signal return at a sounding location and will include suspended solids, known as "fluff", if present. Low frequency (20 kHz) survey data normally penetrates through this "fluff" layer to depict elevations of consolidated bottom material. Low frequency accuracies may vary depending on channel conditions and fathometer settings.