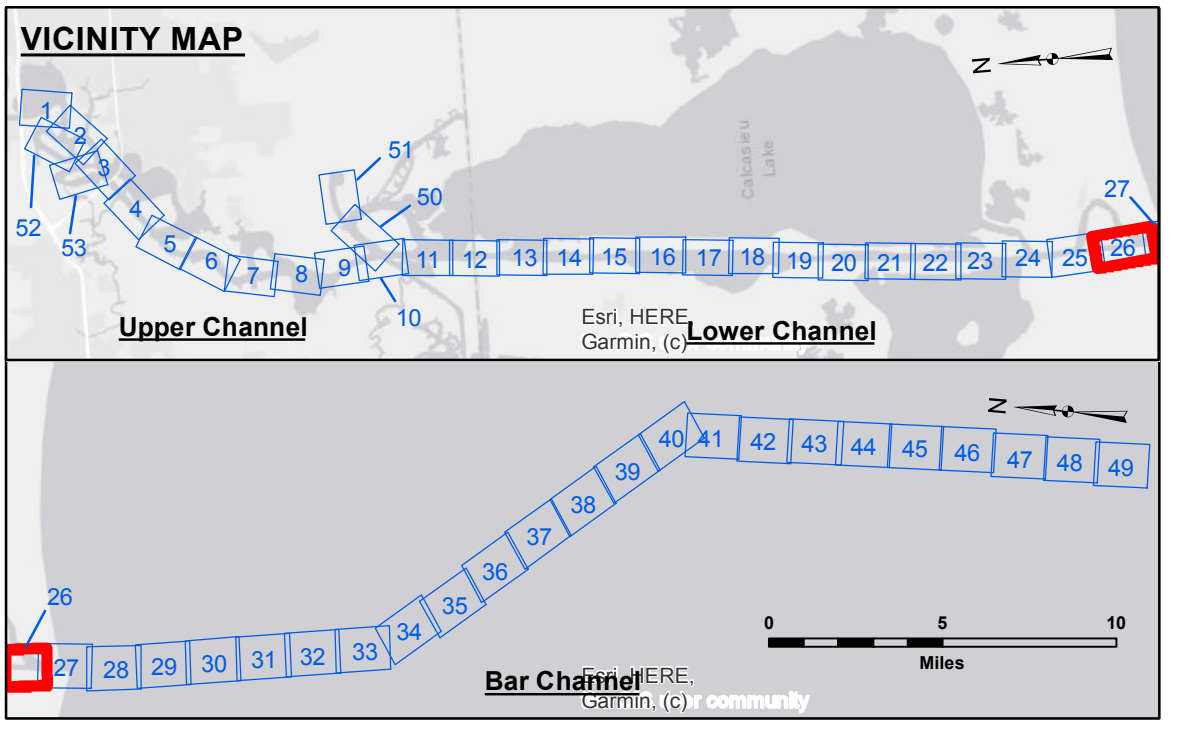


**DISCLAIMER**  
 The United States Government furnishes these data and the recipient accepts and uses them with the express understanding that the data are not warranted for any particular purpose of the recipient, and that the recipient is responsible for the accuracy, completeness, and reliability of the data for their intended use. The user is responsible for the results of their use of the data. The Corps of Engineers does not assume any liability for damages or losses resulting from the use of the data for other than its intended purpose. The information depicted on this map represents the results of a survey conducted on or about the date of the survey. The Corps of Engineers does not assume any liability for changes in the hydrographical conditions which develop after the date of the survey. The information depicted on this map represents the results of a survey conducted on or about the date of the survey. The Corps of Engineers does not assume any liability for changes in the hydrographical conditions which develop after the date of the survey. The information depicted on this map represents the results of a survey conducted on or about the date of the survey. The Corps of Engineers does not assume any liability for changes in the hydrographical conditions which develop after the date of the survey.

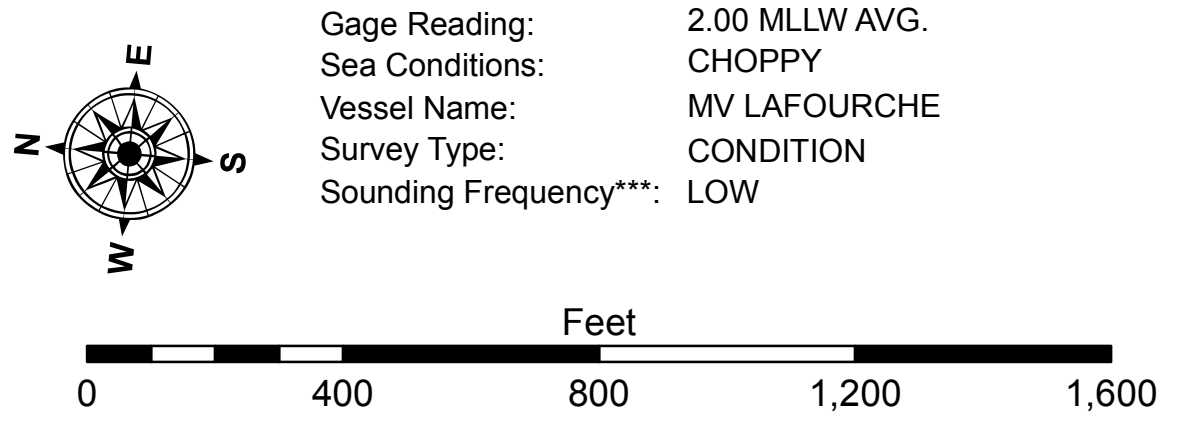
Submitted:	Surveyed By:	Plotted By:	Checked By:
	SPPS	BD	AC
Recommended:	Chief, Survey Section		
Approved:	Chief, Waterways Maintenance Section		

**CALCASIEU SHIP CHANNEL**  
**GAP SHEET 26**  
**CR\_26\_GAP\_20220125\_CS**  
**25 January 2022**

**Sheet Reference Number**  
**26 of 53**



LEGEND		Color Legend	
--- Federal Navigation Channel	○ Cable Area	3	Fluff Thickness (feet)*
— Federal Navigation Center Line	□ Placement Area	●	Shoalest Sounding**
— As-built Pipeline/Cable	⊗ Anchorage Area	★	Beacon, General
..... Unconfirmed Pipeline/Cable	⊗ Obstruction Point	◆	Red Navigation Buoy
— Project Depth Contour	⚓ Wrecks-Submerged	◇	Green Navigation Buoy
		Red	-16' and above
		Orange	-16' to -21'
		Yellow	-21' to -26'
		Light Green	-26' to -33'
		Green	-33' to -39'
		Dark Green	-39' to -41'
		Blue	-41' to -43'
		Dark Blue	-43' and below



**NOTES:**  
 Horizontal Coordinate System: North American Datum of 1983 (NAD83), projected to the State Plane Coordinate System (SPCS), Louisiana South Zone. Distance units in U.S. Survey Feet.  
 Vertical Datum: Soundings are shown in feet and indicate depths below Mean Lower Low Water Datum (MLLW). Datum Relationships for gage 73650 as of December 2013: 0.0' NAVD86 (2009.55) = 1.3' MLLW = 2.3' MLG or 0.0' MLLW = 1.0' MLG  
 Distances on the Calcasieu River are shown at 1 mile intervals.  
 The location of navigation aids are based on and provided by the U.S. Coast Guard and USACE survey crews.  
 2015 Aerial Photography data source: NAIP  
 Reference is N.O.A. Navigation Chart No. 11339.  
 \* Difference between high and low frequency elevations where greater than 1.0'.  
 \*\* Shoalest Sounding per Quarter per Reach.  
 \*\*\* High frequency (200 kHz) survey data represents the first signal return at a sounding location and will include suspended solids, known as "fluff", if present. Low frequency (20 kHz) survey data normally penetrates through this "fluff" layer to depict elevations of consolidated bottom material. Low frequency accuracies may vary depending on channel conditions and fathometer settings.