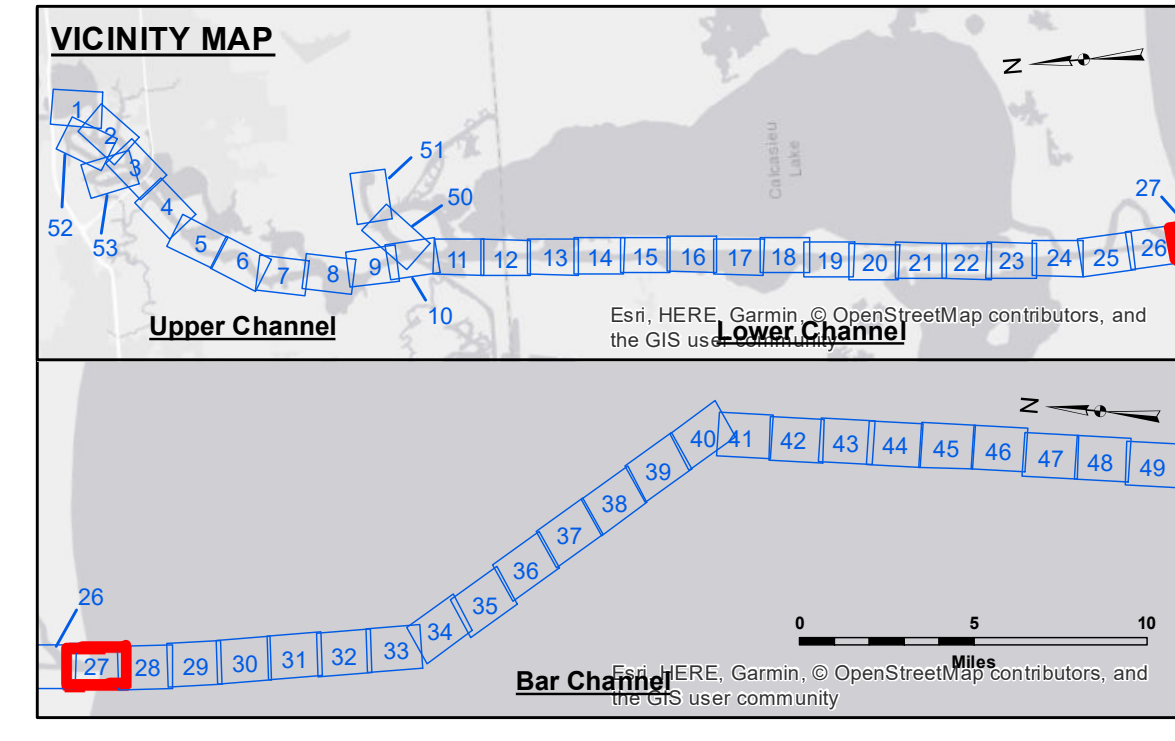
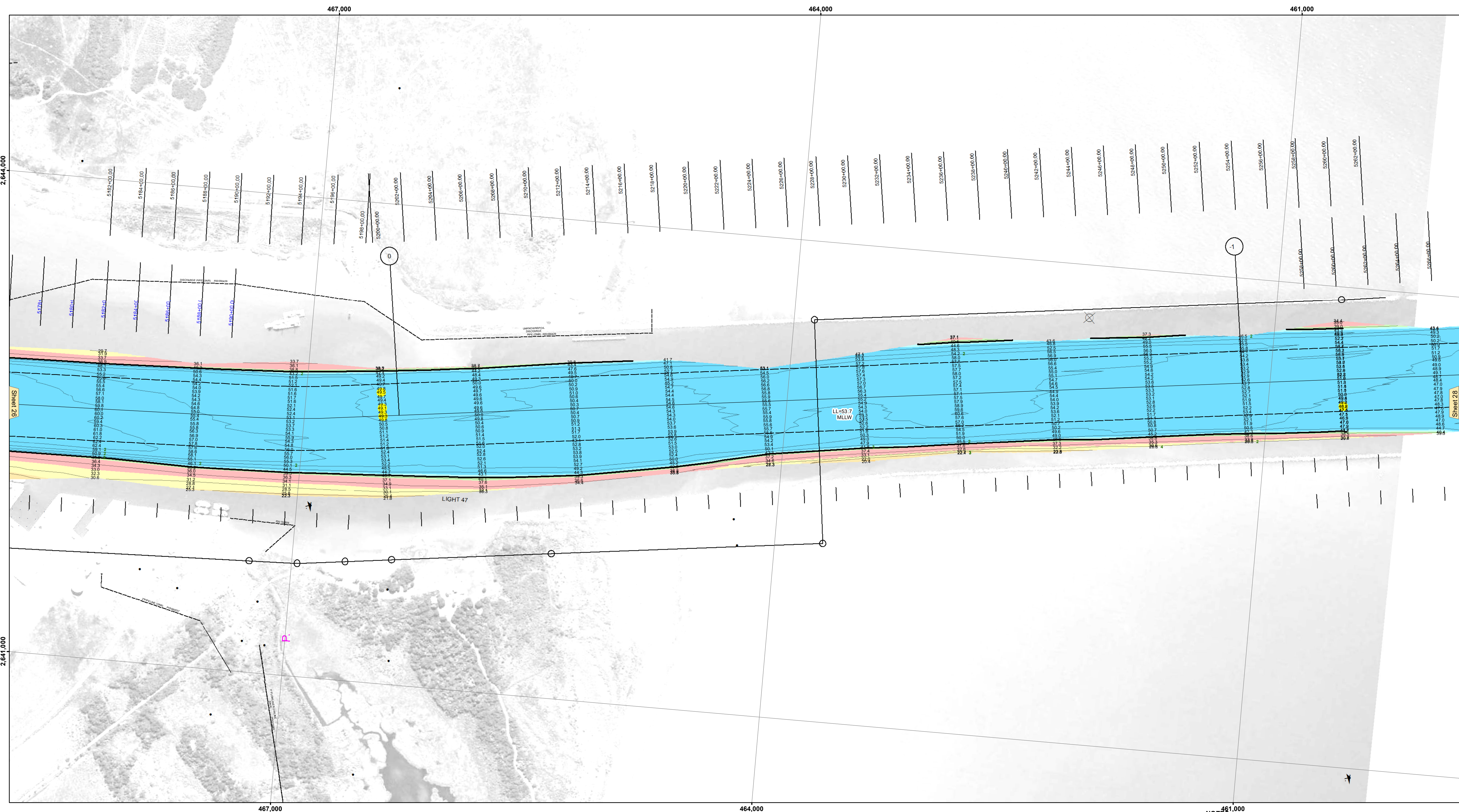
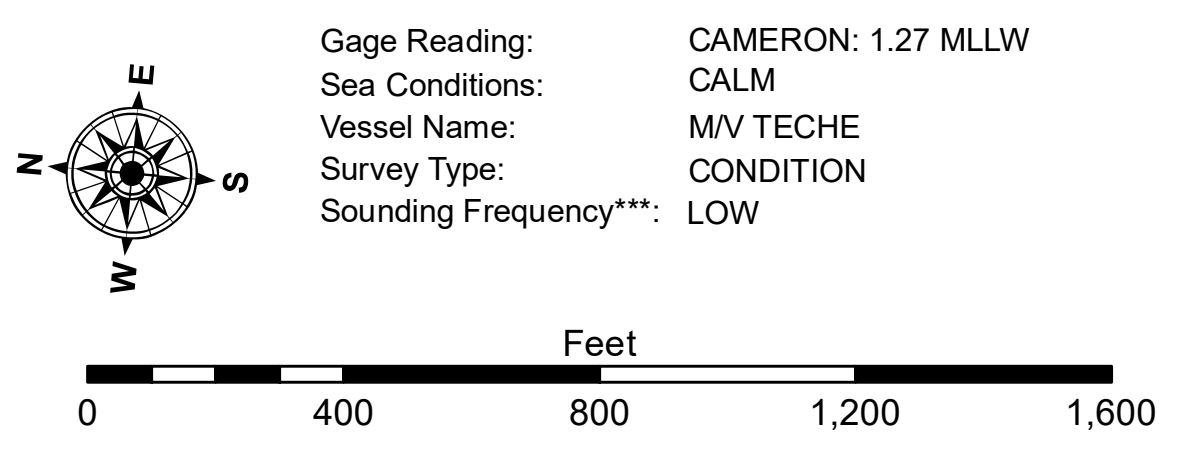




Access/Control: The United States Government furnishes these data and the recipient accepts and uses them with the express understanding that the data are not to be used for any purpose other than that for which they were provided. The user is responsible for the results of any application of the data for other than its intended purpose. Distribution Liability: The data represent the results of data collection for a specific US Army Corps of Engineers project and is only valid for its intended use, control, time and accuracy specifications. The user is responsible for the results of any application of the data for other than its intended purpose. Data Constants: Hydrographic survey data is subject to change rapidly due to several factors including but not limited to dredging, shoaling, and other changes in the channel. The user is responsible for the results of any application of the data for other than its intended purpose. The information depicted on this map represents the results of a survey conducted on the date indicated and is not to be considered as representing the general condition existing at that time.



LEGEND table with symbols for Federal Navigation Channel, Cable Area, Placement Area, Anchorage Area, Obstruction Point, Wrecks-Submerged, Fluff Thickness, Shoalest Sounding, Beacons, Navigation Buoys, and Depth Contours.



NOTES: Horizontal Coordinate System: North American Datum of 1983 (NAD83), projected to the State Plane Coordinate System (SPCS), Louisiana South Zone. Vertical Datum: Soundings are shown in feet and indicate depths below Mean Lower Low Water Datum (MLLW). 2015 Aerial Photography data source: NAIP. Reference is N.O.A.A. Navigation Chart No. 11339.

Approval table with columns for Submitted, Recommended, and Approved, and rows for Surveyed By, Plotted By, and Checked By.

CALCASIEU SHIP CHANNEL GAP SHEET 27 CR_27_GAP_20180125_CS 25 January 2018

Sheet Reference Number 27 of 53