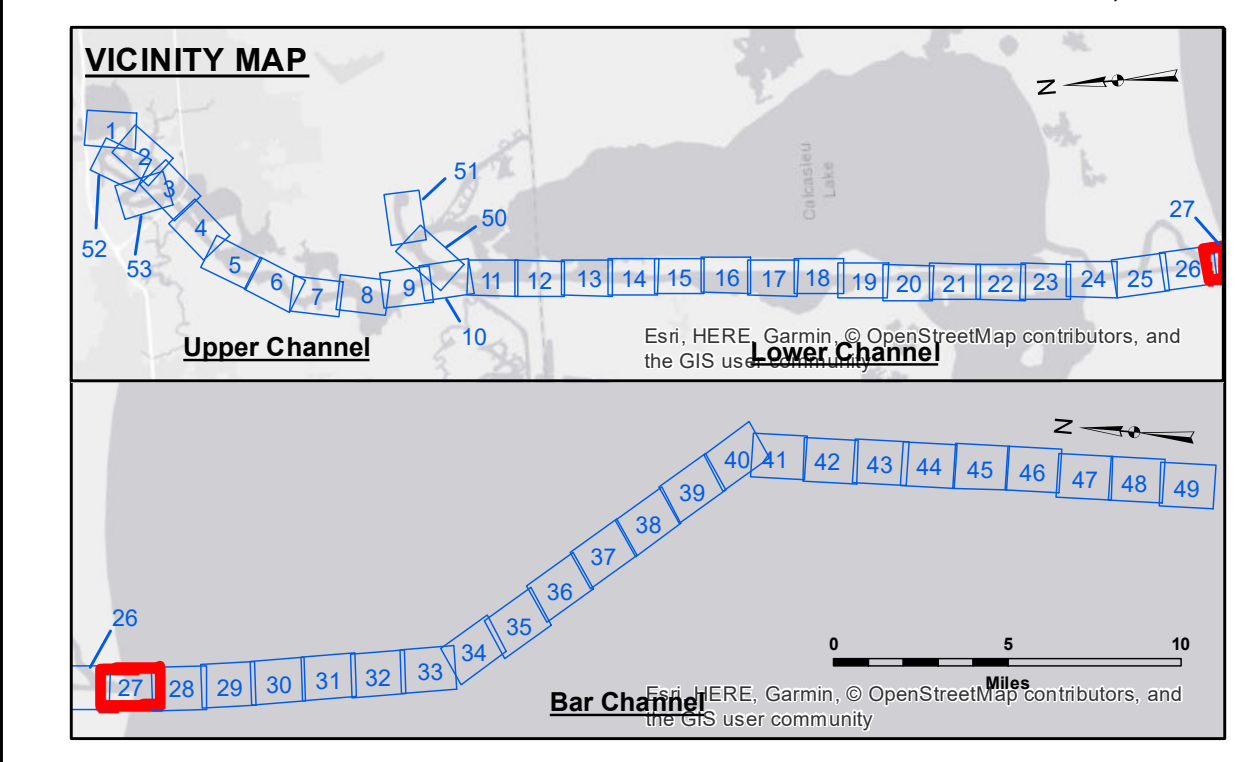


DISCLAIMER: The United States Government furnishes these data and the recipient accepts and uses them with the express understanding that the United States Government makes no warranty, expressed or implied, concerning the accuracy, completeness, reliability, or suitability for any particular purpose of the information. The user is responsible for the results of the use of this information. Application of the data for other than its intended purpose is at the user's risk. Hydrographic survey data is subject to change and may not be current. The user is responsible for the results of the use of this information. The user is responsible for the results of the use of this information. The user is responsible for the results of the use of this information.



**LEGEND**

- Federal Navigation Channel
- Federal Navigation Center Line
- As-built Pipeline/Cable
- ..... Unconfirmed Pipeline/Cable
- Project Depth Contour
- Cable Area
- Placement Area
- Anchorage Area
- ⊗ Obstruction Point
- ✈ Wrecks-Submerged
- 3 Fluff Thickness (feet)\*
- Shoalest Sounding\*\*
- ★ Beacon, General
- ◆ Red Navigation Buoy
- ◆ Green Navigation Buoy
- 16' and above
- 16' to -21'
- 21' to -26'
- 26' to -33'
- 33' to -39'
- 39' to -41'
- 41' to -43'
- 43' and below

**NOTES:**

Horizontal Coordinate System:  
North American Datum of 1983 (NAD83), projected to the State Plane Coordinate System (SPCS), Louisiana South Zone. Distance units in U.S. Survey Feet.

Vertical Datum:  
Soundings are shown in feet and indicate depths below Mean Lower Low Water Datum (MLLW).  
Datum Relationships for gage 73650 as of December 2013:  
0.0' NAVD83 (2009.55) = 1.3' MLLW = 2.3' MLG or 0.0' MLLW = 1.0' MLG

Distances on the Calcasieu River are shown at 1 mile intervals.

The location of navigation aids are base on and provided by the U.S. Coast Guard and USACE survey crews.

2015 Aerial Photography data source: NAIP

Reference is N.O.A. Navigation Chart No. 11339.

\* Difference between high and low frequency elevations where greater than 1.0'.  
\*\* Shoalest Sounding per Quarter per Reach.

\*\*\* High frequency (200 kHz) survey data represents the first signal return at a sounding location and will include suspended solids, known as "fluff", if present. Low frequency (20 kHz) survey data normally penetrates through this "fluff" layer to depict elevations of consolidated bottom material. Low frequency accuracies may vary depending on channel conditions and fathometer settings.

Gage Reading: CAMERON: 0.7 MLLW  
Sea Conditions: 3' SEAS  
Vessel Name: LAFOURCHE  
Survey Type: CONDITION BD  
Sounding Frequency\*\*\*: HIGH

U.S. ARMY CORPS OF ENGINEERS  
NEW ORLEANS DISTRICT

Submitted:	Surveyed By:
Recommended:	SPS:JH
Approved:	Plotted By:
	AO
	Checked By:
	AC

**CALCASIEU SHIP CHANNEL**  
**GAP SHEET 27**  
**CR\_27\_GAP\_20180723\_BD**  
**23 July 2018**

**Sheet Reference Number**  
**27 of 53**