



US Army Corps of Engineers District: CEMVN

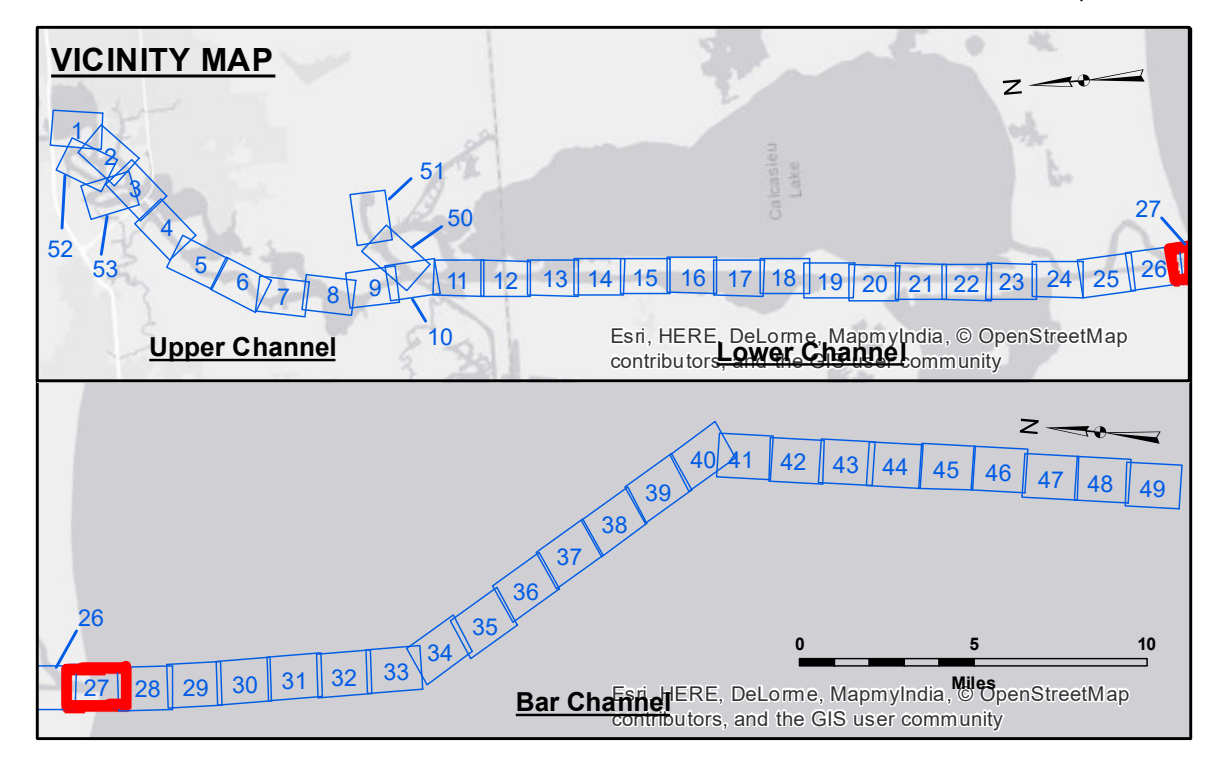
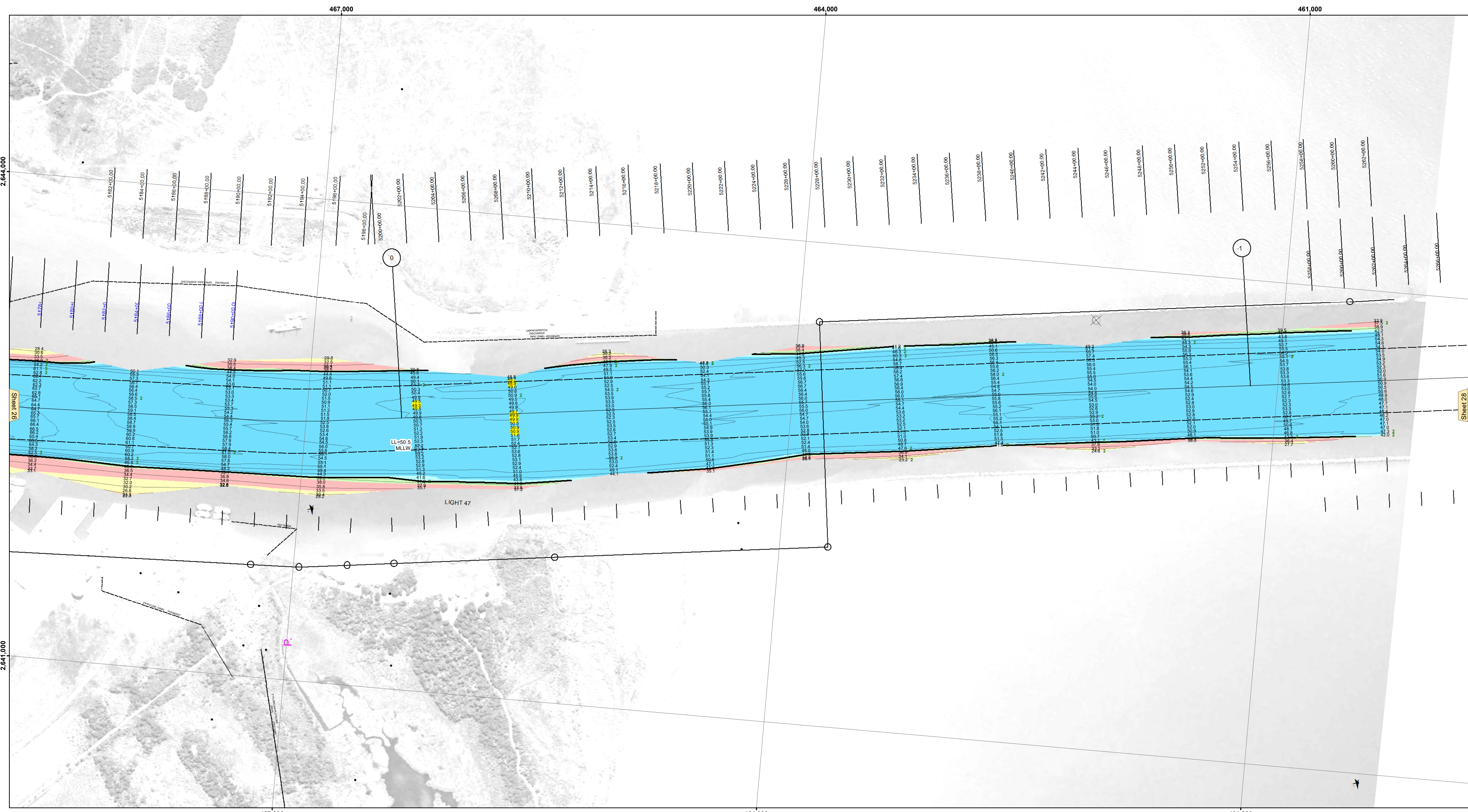
DISCLAIMER: The United States Government furnishes these data and the recipient accepts and uses them with the express understanding that the United States Government makes no warranty, expressed or implied, concerning the accuracy, completeness, reliability, usability or suitability for any particular purpose of the information furnished. The user is responsible for the results obtained from the use of this information. The user shall indemnify, defend and hold the United States Government harmless from and against all claims, damages, costs and expenses, including reasonable attorneys' fees, that may be incurred by the United States Government as a result of the use of this information. The user shall also hold the United States Government harmless from and against all claims, damages, costs and expenses, including reasonable attorneys' fees, that may be incurred by the user as a result of the use of this information. The user shall also hold the United States Government harmless from and against all claims, damages, costs and expenses, including reasonable attorneys' fees, that may be incurred by the United States Government as a result of the use of this information. The user shall also hold the United States Government harmless from and against all claims, damages, costs and expenses, including reasonable attorneys' fees, that may be incurred by the United States Government as a result of the use of this information.

U.S. ARMY CORPS OF ENGINEERS NEW ORLEANS DISTRICT	
Submitted:	Surveyed By: JH/PS
Recommended: Chief, Survey Section	Plotted By: BD
Approved: Chief, Waterways Maintenance Section	Checked By: AC

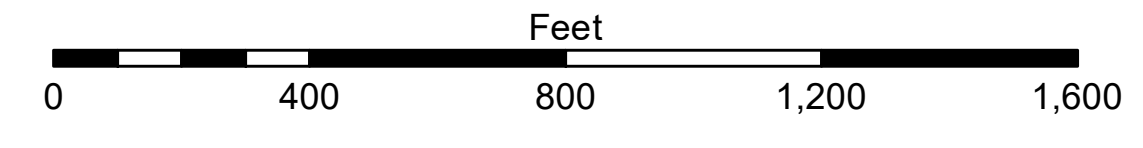
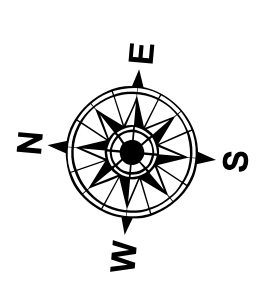
**CALCASIEU SHIP CHANNEL
GAP SHEET 27
CR_27_GAP_20190123_CS
23 January 2019**

**Sheet Reference Number
27 of 53**

Revision Number: 1.13-20160811



LEGEND	
--- Federal Navigation Channel	○ Cable Area
— Federal Navigation Center Line	□ Placement Area
— As-built Pipeline/Cable	□ Anchorage Area
..... Unconfirmed Pipeline/Cable	⊗ Obstruction Point
— Project Depth Contour	⚓ Wrecks-Submerged
3 Fluff Thickness (feet)*	★ Beacon, General
● Shoalest Sounding**	◆ Red Navigation Buoy
★ Beacon, General	◆ Green Navigation Buoy
■ -16' and above	
■ -16' to -21'	
■ -21' to -26'	
■ -26' to -33'	
■ -33' to -39'	
■ -39' to -41'	
■ -41' to -43'	
■ -43' and below	



Gage Reading: CAMERON: 0.52 AVG.
 Sea Conditions: CALM
 Vessel Name: M/V LAFOURCHE
 Survey Type: CONDITION
 Sounding Frequency***: LOW

NOTES:
 Horizontal Coordinate System:
 North American Datum of 1983 (NAD83), projected to the State Plane Coordinate System (SPCS), Louisiana South Zone. Distance units in U.S. Survey Feet.
 Vertical Datum:
 Soundings are shown in feet and indicate depths below Mean Lower Low Water Datum (MLLW).
 Datum Relationships for gage 73650 as of December 2013:
 0.0' NAVD83 (2009.55) = 1.3' MLLW = 2.3' MLG or 0.0' MLLW = 1.0' MLG
 Distances on the Calcasieu River are shown at 1 mile intervals.
 The location of navigation aids are base on and provided by the U.S. Coast Guard and USACE survey crews.
 2015 Aerial Photography data source: NAIP
 Reference is N.O.A.A. Navigation Chart No. 11339.
 * Difference between high and low frequency elevations where greater than 1.0'.
 ** Shoalest Sounding per Quarter per Reach.
 *** High frequency (200 kHz) survey data represents the first signal return at a sounding location and will include suspended solids, known as "fluff", if present. Low frequency (20 kHz) survey data normally penetrates through this "fluff" layer to depict elevations of consolidated bottom material. Low frequency accuracies may vary depending on channel conditions and fathometer settings.