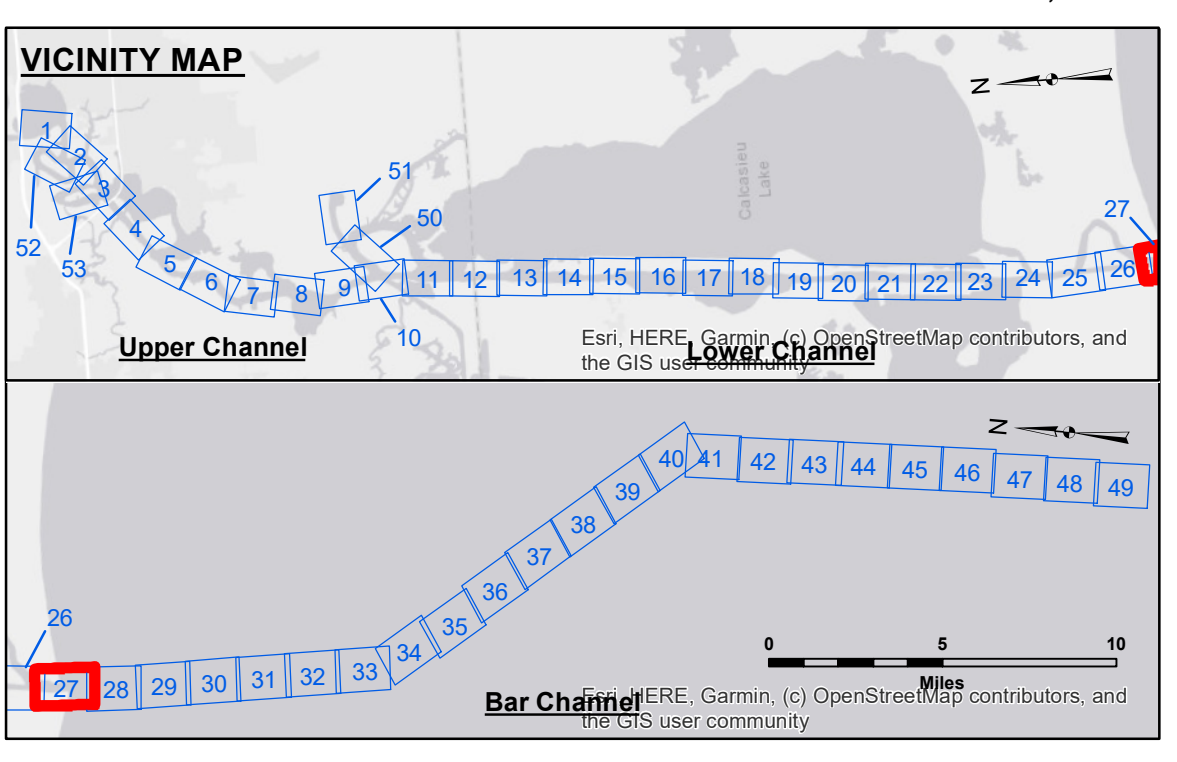


**DISCLAIMER**  
 The United States Government furnishes these data and the recipient accepts and uses them with the express understanding that the data are not warranted for any purpose other than that for which they were collected. The user is responsible for the results of any use of the data for other than the intended purpose.  
 The information depicted on this map represents the results of a survey conducted on or about the date of the survey. The user is responsible for the results of any use of the data for other than the intended purpose.  
 The information depicted on this map represents the results of a survey conducted on or about the date of the survey. The user is responsible for the results of any use of the data for other than the intended purpose.

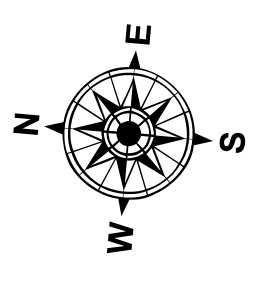
U.S. ARMY CORPS OF ENGINEERS NEW ORLEANS DISTRICT	
Submitted:	RYLAND/ADAMS
Recommended:	Chart, Survey Section
Approved:	Chart, Waterways Maintenance Section
Surveyed By:	AO
Plotted By:	AO
Checked By:	AO

**CALCASIEU SHIP CHANNEL  
 GAP SHEET 27  
 CR\_27\_GAP\_20191121\_CS  
 21 November 2019**

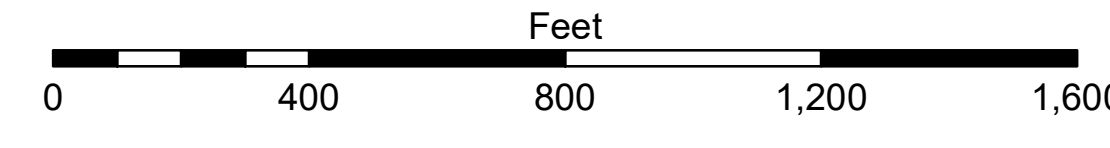


LEGEND	
--- Federal Navigation Channel	○ Cable Area
— Federal Navigation Center Line	□ Placement Area
— As-built Pipeline/Cable	□ Anchorage Area
..... Unconfirmed Pipeline/Cable	⊗ Obstruction Point
— Project Depth Contour	⚓ Wrecks-Submerged
3 Fluff Thickness (feet)*	★ Beacon, General
● Shoalest Sounding**	◆ Red Navigation Buoy
◆ Green Navigation Buoy	

-16' and above	■
-16' to -21'	■
-21' to -26'	■
-26' to -33'	■
-33' to -39'	■
-39' to -41'	■
-41' to -43'	■
-43' and below	■



Gage Reading: CAMERON: 2.3 MLLW AVG  
 Sea Conditions: CALM  
 Vessel Name: M/V VALENTOUR  
 Survey Type: CONDITION  
 Sounding Frequency\*\*\*: LOW



**NOTES:**  
 Horizontal Coordinate System: North American Datum of 1983 (NAD83), projected to the State Plane Coordinate System (SPCS), Louisiana South Zone. Distance units in U.S. Survey Feet.  
 Vertical Datum: Soundings are shown in feet and indicate depths below Mean Lower Low Water Datum (MLLW). Datum Relationships for gage 73650 as of December 2013: 0.0' NAVD83 (2009.55) = 1.3' MLLW = 2.3' MLG or 0.0' MLLW = 1.0' MLG  
 Distances on the Calcasieu River are shown at 1 mile intervals.  
 The location of navigation aids are base on and provided by the U.S. Coast Guard and USACE survey crews.  
 2015 Aerial Photography data source: NAIP  
 Reference is N.O.A. Navigation Chart No. 11339.  
 \* Difference between high and low frequency elevations where greater than 1.0'.  
 \*\* Shoalest Sounding per Quarter per Reach.  
 \*\*\* High frequency (200 kHz) survey data represents the first signal return at a sounding location and will include suspended solids, known as "fluff", if present. Low frequency (20 kHz) survey data normally penetrates through this "fluff" layer to depict elevations of consolidated bottom material. Low frequency accuracies may vary depending on channel conditions and fathometer settings.

**Sheet Reference Number  
 27 of 53**